



Mangroves for the Future
INVESTING IN COASTAL ECOSYSTEMS

GENDER EQUALITY



© Ana Grillo/MFF Thailand

Mangroves for the Future (MFF) is a unique partner-led initiative to promote investment in coastal ecosystem conservation for sustainable development





© Siriporn Sriaram/MFF Thailand

Gender in Coastal Conservation

In all regions of the world, women and men have unique relationships with, dependency upon, and expertise regarding their environment. Poor understanding of the roles and contributions that both genders bring often leads to a lack of recognition of their needs and interests in policies and programmes.

Recognising that gender equality is fundamental to conservation and sustainable development, MFF has established gender integration as an important strategic approach in its programme. The MFF Resilience Framework works with local communities to identify and implement sustainable coastal resource management interventions that contribute to the advancement of gender equality.



© Yus Rusila Noor

“Besides ensuring that women are involved in activities, I also ensure that the decision-making process involves all members of the communities.” - **Yus Rusila Noor**, Wetland International’s gender focal point for MFF.

Key facts on Gender

- **Gender** is used when analysing the relationship between men and women, and girls and boys, in regard to their different access to power, life opportunities, vulnerabilities and different strategies for change.
- **Equality and Equity:**
 - o **Gender Equality:** women, men, boys and girls have equal rights, life prospects and opportunities to shape their own lives and contribute to society.
 - o **Gender Equity:** the process of allocating resources, programmes and decision making opportunities fairly without any discrimination on the basis of sex, and addressing any imbalances in the benefits available to males and females.
- **Gender Mainstreaming:** the process of assessing the implications for women and men of any planned action, policy or programme, in all areas and at all levels before any decisions are made and throughout the whole process.
- **Social Empowerment:** the process through which individuals or groups increase their power and autonomy to achieve certain outcomes they need and desire.



© Siriporn Sriaram/MFF Thailand

Women in Coastal Conservation

More than
♀ 17,000
beneficiaries reached

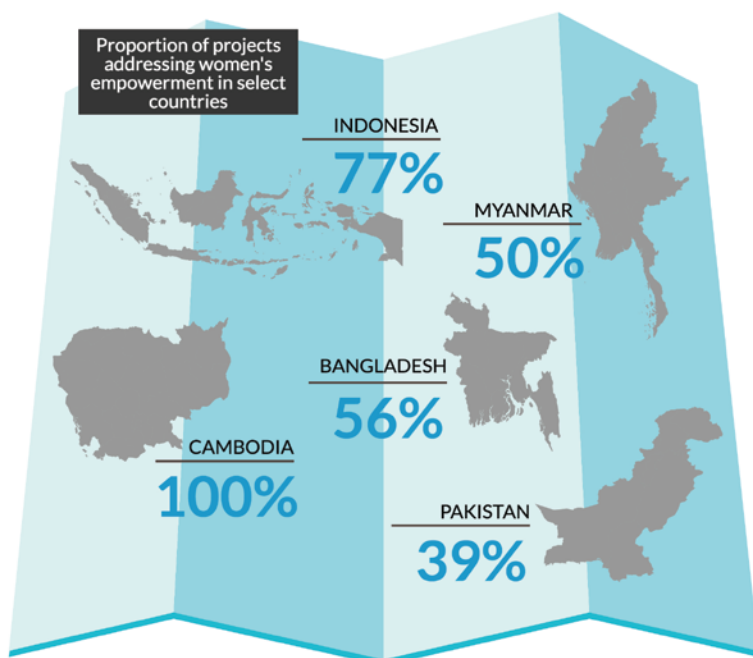
*Based on data from 7 out of 11 MFF countries:
Bangladesh, India, Indonesia, Pakistan, Sri Lanka,
Thailand and Viet Nam

Over
\$ 950,000
disbursed for gender inclusive
initiatives since 2010



81%
of projects
contributed to
**IMPROVING
WOMEN'S INCOME
and LIVELIHOOD**

80%
of projects provided
**EDUCATION,
TRAINING and
AWARENESS** to women
and their families





© Ana Griño/MFF Thailand

Opportunities to scale up gender efforts

Regional

- Aligning MFF with Sustainable Development Goals (SDGs) by placing gender at the core of policy, planning and implementation processes.
- Capitalising on major financing mechanisms that have gender mandates e.g. Green Climate Fund and Global Environment Facility.

National

- Supporting rights-based and gender-sensitive project design and implementation through the use of appropriate tools. This includes setting targets and using checklists for gender-focused poverty and livelihoods analysis.
- Using participatory, community-based approaches to ensure that the voices of women and men are equally heard and valued.
- Developing clear accountability and monitoring frameworks to measure gender-responsive results and impacts on the ground.



© Indra Kertati

“For seven years, I joined the communities and lived together with them. I explored their problems and understood their lives.” -
Indra Kertati, Director of MFF grantee, Lembaga Pengkaijiandan Pengembangan Sumberdaya Pembangunan Semarang (LPPSP)



© Xuan Thuy National Park

Key Activities

- Gender is incorporated into MFF's resilience assessment, creating a more conscious integration of gender analysis for priority geographic sites.
- The MFF Strategic Framework and Action Plan facilitates the integration of gender equality in the design, planning and execution of activities supported by MFF.
- MFF organises capacity building training events to strengthen IUCN's regional institutional capacity and development of gender-integrated planning skills of field practitioners.
- MFF has developed a Regional Gender Study to explore gender patterns in coastal and marine resources management in partnership with the Southeast Asian Fisheries Development Centre (SEAFDEC) and the Stockholm Environment Institute (SEI).
- MFF has also demonstrated the application of gender mainstreaming processes in other IUCN water governance programmes, working with government and CSO partners in the Mekong and Ganges-Brahmaputra-Meghna watersheds, as well as RAMSAR wetlands in Lao PDR.



© IUCN Pakistan



© IUCN Bangladesh and Nabolok Parishad

“After the financial leadership training, my confidence has increased a great deal and I now feel empowered to negotiate mat prices directly with customers.” – **Promila**



© SPEED

“I learned that cultivating mangrove plants ensures healthy growth of fish populations, and that mangroves act as a natural shelter during natural disasters such as floods and tsunamis. These are things I never knew before.” - **Jenitha**

Mangroves for the Future (MFF)

Secretariat Office

63 Sukhumvit Soi 39

Bangkok 10110 Thailand

Tel: +662 662 4029

Fax: +662 662 4389

www.mangrovesforthefuture.org