



# PROGRAM MANAGEMENT

**November 13<sup>th</sup>, 2017 - November 17<sup>th</sup>, 2017**

A weekly update on the GEF Program Management

## Calendar

- Council Meeting Schedules
- GEFOP Meeting Schedules

## Projects

- GEF Project Concepts, Proposals, Draft Documents Received
- Project Clearances, Approvals, Endorsements and Other Comments

## Contacts

- GEF Secretariat Staff
- GEF Agencies
- GEF Trustee Convention Secretariats

## Communications

- Introducing new staff to the GEFSEC
- Announcements

## SCHEDULE OF FORTHCOMING GEF COUNCIL MEETING

Meetings/Consultations	November 2017
GEF Council Consultations with Civil Society	November 27
GEF Council Meeting	November 28-30
LDCF/SCCF Council Meeting	November 30
STAP Panel Meetings	

## GEF Work Program Calendar for 2017

Events	May CWP
Receipt deadline for PIF/PFD	September 1
Draft Cover Note to Agencies, ConvSec, STAP	October 20
Inter-Agency Meeting with ConvSec, STAP	October 25
Posting of Work Program	October 31
Council Meeting	November 28-30
Council Approval	November 30

**Fiscal Year '17**

**Country Support Program Activities**

**Expanded Constituency Workshops**

**Constituency Meetings**

**November 22 - November 23**

**Southern Cone**

*Argentina*

## Requests Received from GEF Agencies

November 13 - 17, 2017

GEF ID	IA ID	Type	Focal Area	Decision Sought	Proponent	Country	Project Title	Program Manager	Date Received
<u>CI</u>									
9923		MSP	Climate Change	CEO PIF Clearance for WPI	CI	Liberia	Building and Strengthening Liberia's National Capacity to Implement the Transparency Elements of the Paris Climate Agreement	Dustin Schinn	13-Nov-17
9445		FP	Biodiversity	CEO endorsement of FSP	CI	Mexico	Conservation and Sustainable Use of Biological Diversity in Priority Landscapes of Oaxaca and Chiapas	Mark Zimsky	15-Nov-17
<u>FAO</u>									
9089		FP	Multi Focal Area	CEO endorsement of FSP	FAO	Serbia	Contribution of Sustainable Forest Management to a Low Emission and Resilient Development	Ulrich Apel	16-Nov-17
<u>IUCN</u>									
9417		FP	Multi Focal Area	CEO endorsement of FSP	IUCN	Chad	Restoring Ecological Corridors in Western Chad for Multiple Land and Forests Benefits - RECONNECT	Jean-Marc Sinnassamy	16-Nov-17

GEF ID	IA ID	Type	Focal Area	Decision Sought	Proponent	Country	Project Title	Program Manager	Date Received
<u>UNDP</u>									
9527	5619	FP	Biodiversity	CEO endorsement of FSP	UNDP	Thailand	Combatting Illegal Wildlife Trade, Focusing on Ivory, Rhino Horn, Tiger and Pangolins in Thailand	Jaime Cavelier	13-Nov-17
9944	5666	MSP	Biodiversity	CEO PIF Approval	UNDP	Fiji	Strengthening Fiji's network of Locally Managed Marine Areas (LMMAs) to support globally significant marine biodiversity	Cyrille Barnerias	13-Nov-17

<b>GEF ID</b>	<b>IA ID</b>	<b>Type</b>	<b>Focal Area</b>	<b>Decision Sought</b>	<b>Proponent</b>	<b>Country</b>	<b>Project Title</b>	<b>Program Manager</b>	<b>Date Received</b>
<b>UNEP</b>									
9915		EA	Land Degradation	CEO EA Approval	UNEP	Global	Global Support Programme II: Strengthening UNCCD Reporting – Enhancing Implementation of the UNCCD	Jean-Marc Sinnassamy	13-Nov-17
9413		FP	Multi Focal Area	CEO endorsement of FSP	UNEP	Brazil	Realizing the Biodiversity Conservation Potential of Private Lands	Mark Zimsky	13-Nov-17
9670		MSP	Climate Change	CEO MSP Approval	UNEP	Regional (Albania, Algeria, Libya, Morocco, Montenegro, Tunisia)	Enhancing Regional Climate Change Adaptation in the Mediterranean Marine and Coastal Areas	Saliha Dobardzic	14-Nov-17
9954		MSP	Climate Change	CEO PIF Approval	UNEP	Maldives	Integrated, Sustainable and Low Emissions Transport in the Maldives	Ming Yang	15-Nov-17
9915		EA	Land Degradation	CEO EA Approval	UNEP	Global	Global Support Programme II: Strengthening UNCCD Reporting – Enhancing Implementation of the UNCCD	Jean-Marc Sinnassamy	16-Nov-17
9955		MSP	Climate Change	CEO PIF Approval	UNEP	Argentina	Strengthening Argentina's Transparency Framework on GHG Inventories and Mitigation	Milena Vasquez	16-Nov-17
9496		MSP	Climate Change	CEO MSP Approval	UNEP	Chile	Leapfrogging Chilean's Markets to more Efficient Refrigerator and Freezers	Milena Vasquez	16-Nov-17

GEF ID	IA ID	Type	Focal Area	Decision Sought	Proponent	Country	Project Title	Program Manager	Date Received
<u>UNIDO</u>									
9218		FP	Climate Change	CEO endorsement of FSP	UNIDO	Turkey	Sustainable Use of Biomass to Assist the Development of Turkey's Economy Towards a Low-carbon Development Path	Ming Yang	17-Nov-17
<u>World Bank</u>									
9529	161204	FP	Biodiversity	CEO endorsement of FSP	World Bank	Vietnam	Strengthening Partnerships to Protect Endangered Wildlife in Vietnam	Jaime Cavelier	15-Nov-17

# Responses to Proponents

November 13 - 17, 2017

ID	IA ID	Type	Focal Area	Decision Sought	Proponen	Country	Project Title	Program Manage	Response Date	Remarks
<b><u>ADB</u></b>										
9355		FP	Climate Change	CEO endorsement of FSP	ADB	Tonga	Outer Island Renewable Energy Project	Ming Yang	9-Nov-17	FSP endorsed by CEO
<b><u>AfDB</u></b>										
9896		FP	Climate Change	CEO PIF Clearance for WPI	AfDB	Chad	Strengthening Rural and Urban Resilience to Climate Change and Variability by the Provision of Water Supply and Sanitation in Chad	Katya Kuang-Idba	10-Nov-17	PIF cleared for WPI by CEO
9896		FP	Climate Change	CEO PPG approval	AfDB	Chad	Strengthening Rural and Urban Resilience to Climate Change and Variability by the Provision of Water Supply and Sanitation in Chad	Katya Kuang-Idba	10-Nov-17	PPG approved by CEO
<b><u>CI</u></b>										
9941		MSP	Climate Change	CEO MSP Approval	CI	Global	Structuring and Launching CRAFT: the First Private Sector Climate Resilience & Adaptation Fund for Developing Countries	Dustin Schinn	15-Nov-17	MSP approved by CEO
9941		MSP	Climate Change	CEO MSP Approval	CI	Global	Structuring and Launching CRAFT: the First Private Sector Climate Resilience & Adaptation Fund for Developing Countries	Dustin Schinn	15-Nov-17	MSP approved by CEO (Rev letter)



<b>ID</b>	<b>IA ID</b>	<b>Type</b>	<b>Focal Area</b>	<b>Decision Sought</b>	<b>Proponen</b>	<b>Country</b>	<b>Project Title</b>	<b>Program Manage</b>	<b>Response Date</b>	<b>Remarks</b>
9923		MSP	Climate Change	CEO PIF Approval	CI	Liberia	Building and Strengthening Liberia's National Capacity to Implement the Transparency Elements of the Paris Climate Agreement	Dustin Schinn	16-Nov-17	PIF recommended for CEO approval
9949		MSP	International Waters	CEO MSP Approval	CI	Regional (Guyana, Suriname)	Setting the foundations for zero net loss of the mangroves that underpin human wellbeing in the North Brazil Shelf LME.	Cyrille Barnerias	17-Nov-17	MSP sent to Agency for revision

## IUCN

9417		FP	Multi Focal Area	CEO endorsement of FSP	IUCN	Chad	Restoring Ecological Corridors in Western Chad for Multiple Land and Forests Benefits - RECONNECT	Jean-Marc Sinnassamy	13-Nov-17	Review Sheet sent to Agency for FSP revision
------	--	----	------------------	------------------------	------	------	---	----------------------	-----------	--

## UNDP

9079	5615	FP	Chemicals and Waste	CEO endorsement of FSP	UNDP	Honduras	Environmentally Sound Management of Products and Wastes Containing POPs and Risks Associated with Their Final Disposal	Anil Sookdeo	9-Nov-17	FSP endorsed by CEO
9950	5488	MSP	Climate Change	CEO MSP Approval	UNDP	Montenegro	Growing Green Business in Montenegro	Ming Yang	9-Nov-17	MSP approved by CEO
9246	5714	FP	Multi Focal Area	CEO endorsement of FSP	UNDP	Regional (Guatemala, Honduras)	Integrated Environmental Management of the Rio Motagua Watershed	Christian Severin	14-Nov-17	Review Sheet sent to Agency for FSP revision

<b>ID</b>	<b>IA ID</b>	<b>Type</b>	<b>Focal Area</b>	<b>Decision Sought</b>	<b>Proponen</b>	<b>Country</b>	<b>Project Title</b>	<b>Program Manage</b>	<b>Response Date</b>	<b>Remarks</b>
9215	5560	FP	Biodiversity	CEO endorsement of FSP	UNDP	Djibouti	Mitigating Key Sector Pressures on Marine and Coastal Biodiversity and Further Strengthening the National System of Marine Protected Areas in Djibouti	Jaime Cavelier	14-Nov-17	Review Sheet sent to Agency for FSP revision
9341	5754	MSP	Multi Focal Area	CEO PIF Approval	UNDP	Timor Leste	Strengthening Targeted National Capacities to Improve Decision-making and Mainstream Global Environmental Obligations into National Development Priorities	Susan Waithaka	15-Nov-17	Review Sheet sent to Agency for PIF revision (Review sheet sent on june , resent today again)
9527	5619	FP	Biodiversity	CEO endorsement of FSP	UNDP	Thailand	Combating Illegal Wildlife Trade, Focusing on Ivory, Rhino Horn, Tiger and Pangolins in Thailand	Jaime Cavelier	15-Nov-17	FSP circulated to Council before CEO endorsement
5306	5128	EA	Climate Change	CEO EA Approval	UNDP	Nicaragua	Third National Communication	Rawleston Moore	16-Nov-17	EA approved by CEO (Project cancellation)

## UNEP

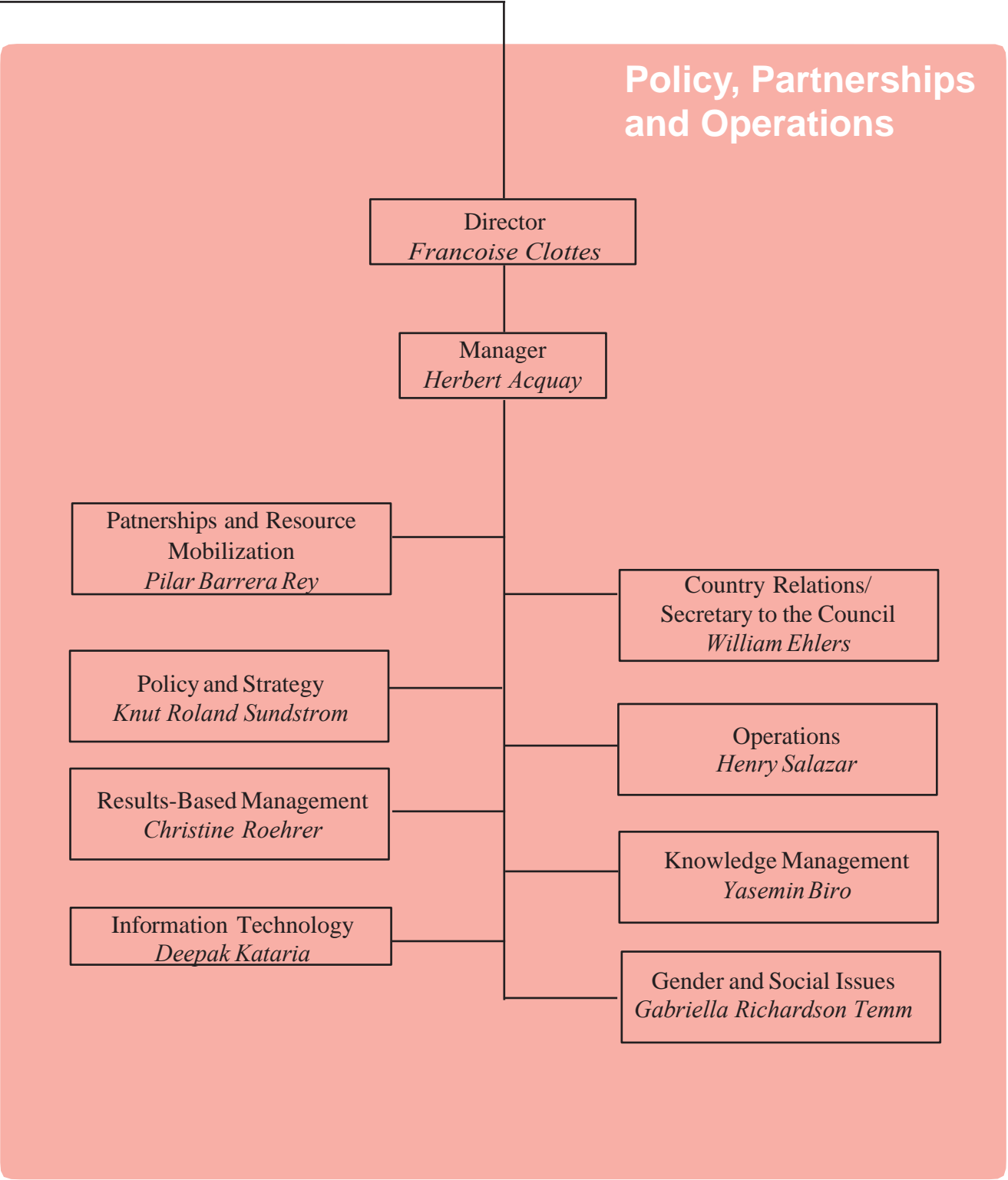
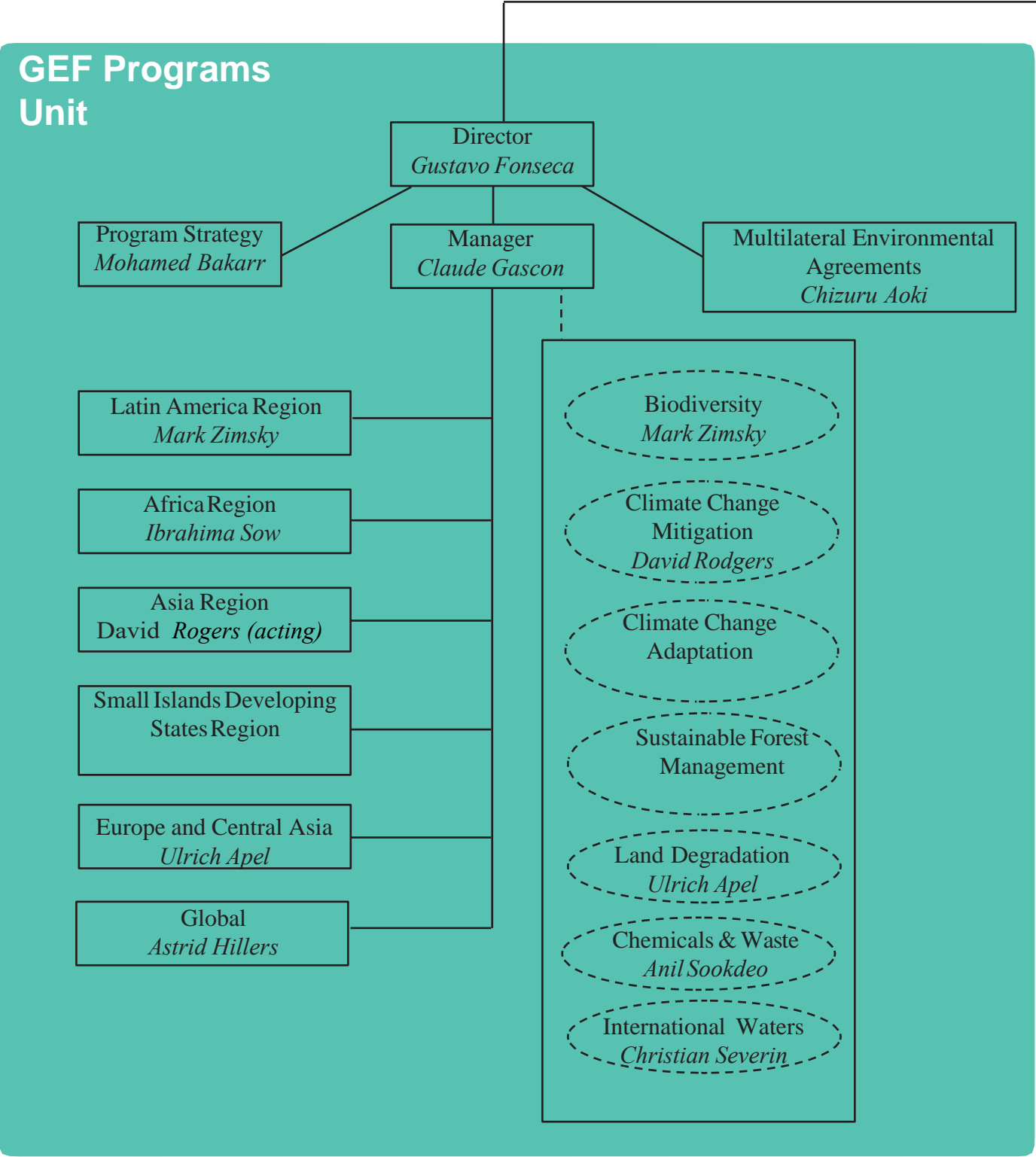
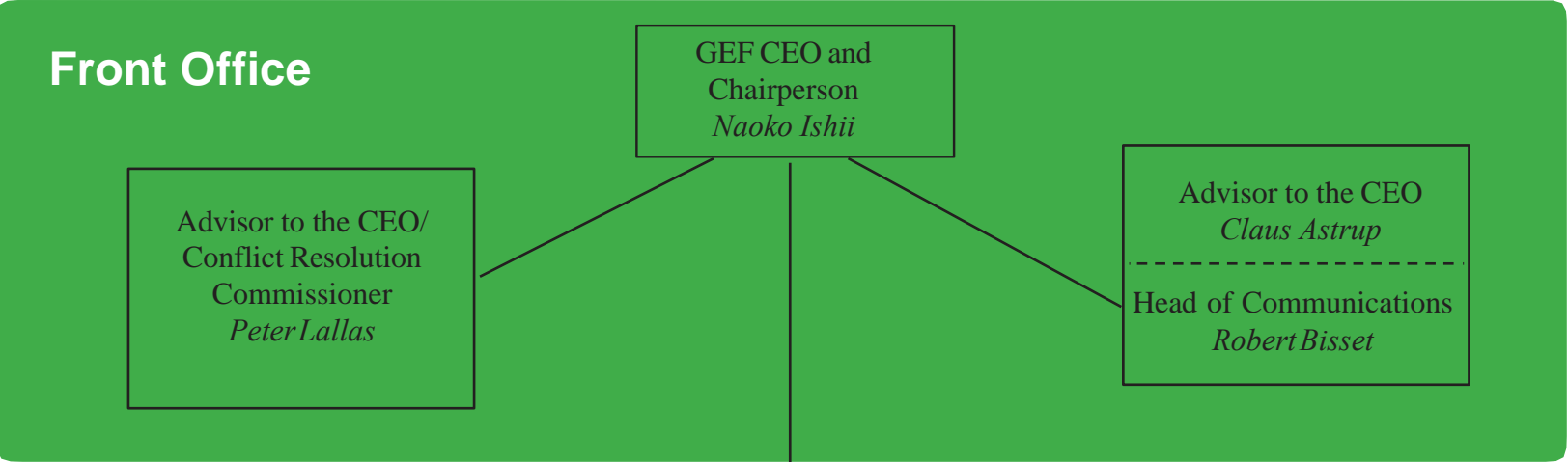
9723		FP	Climate Change	Council approval of PIF	UNEP	South Sudan	Strengthening the Capacity of Government and Communities in South Sudan to Adapt to Climate Change	Dustin Schinn	15-Jun-17	PIF approved by Council
9884		MSP	Chemicals and Waste	CEO MSP Approval	UNEP	Global (Honduras, Kenya, Cambodia, St. Lucia, Moldova, Madagascar, Papua New Guinea, Ukraine)	Integrated SC Toolkit to Improve the Transmission of Information under Articles 07 and 15	Anil Sookdeo	9-Nov-17	MSP approved by CEO

<b>ID</b>	<b>IA ID</b>	<b>Type</b>	<b>Focal Area</b>	<b>Decision Sought</b>	<b>Proponen</b>	<b>Country</b>	<b>Project Title</b>	<b>Program Manage</b>	<b>Response Date</b>	<b>Remarks</b>
9858		MSP	Biodiversity	CEO MSP Approval	UNEP	Global	Supply Change: Promoting Reduction of Deforestation Impacts of Commodity Supply Chains	Paul Hartman	9-Nov-17	MSP approved by CEO
8022		FP	Climate Change	CEO PIF Clearance for WPI	UNEP	Lao PDR	Building the Capacity of the Lao PDR Government to Advance the National Adaptation Planning Process	Fareeha Iqbal	14-Nov-17	PIF cleared for WPI by CEO
8022		FP	Climate Change	CEO PPG approval	UNEP	Lao PDR	Building the Capacity of the Lao PDR Government to Advance the National Adaptation Planning Process	Fareeha Iqbal	14-Nov-17	PPG approved by CEO
8022		FP	Climate Change	CEO PIF Clearance for WPI	UNEP	Lao PDR	Building the Capacity of the Lao PDR Government to Advance the National Adaptation Planning Process	Fareeha Iqbal	14-Nov-17	PIF cleared for WPI by CEO
9947		MSP	Climate Change	CEO PIF Approval	UNEP	Global	The SEforALL Building Efficiency Accelerator (BEA): Expanding Local Action and Driving National Change	David Elrie Rodgers	15-Nov-17	Review Sheet sent to Agency for PIF revision
9954		MSP	Climate Change	CEO PIF Approval	UNEP	Maldives	Integrated, Sustainable and Low Emissions Transport in the Maldives	Ming Yang	15-Nov-17	Review Sheet sent to Agency for PIF revision
9337		FP	Climate Change	CEO endorsement of FSP	UNEP	Global (Chile, Costa Rica, Indonesia, Kazakhstan, Myanmar, Sudan, Tunisia, South Africa)	Global Project to Leapfrog Markets to Energy Efficient Lighting, Appliances and Equipment	Milena Vasquez	16-Nov-17	FSP endorsed by CEO
9954		MSP	Climate Change	CEO PIF Approval	UNEP	Maldives	Integrated, Sustainable and Low Emissions Transport in the Maldives	Ming Yang	16-Nov-17	Review Sheet sent to Agency for PIF revision

ID	IA ID	Type	Focal Area	Decision Sought	Proponen	Country	Project Title	Program Manage	Response Date	Remarks
9915		EA	Land Degradation	CEO PIF Approval	UNEP	Global	Global Support Programme II: Strengthening UNCCD Reporting – Enhancing Implementation of the UNCCD	Jean-Marc Sinnassamy	16-Nov-17	PIF recommended for CEO approval

**UNIDO**

9640		MSP	Climate Change	CEO MSP Approval	UNIDO	Cambodia	Low-carbon Development for Productivity and Climate Change Mitigation through the Transfer of Environmentally Sound Technology (TEST)	Ming Yang	9-Nov-17	MSP approved by CEO
------	--	-----	----------------	------------------	-------	----------	---	-----------	----------	---------------------



**Naoko Ishii**  
Chief Executive Officer and Chairperson  
[nishii@thegef.org](mailto:nishii@thegef.org)

## FRONT OFFICE

**Peter Lallas**

Advisor to the Chief Executive Officer  
[plallas@thegef.org](mailto:plallas@thegef.org)  
+1 202 473 9732

**Amornrat Ning Poopech**

Resource Management Officer  
[apoopech@thegef.org](mailto:apoopech@thegef.org)  
+1 202 458 4366

**Esther Pormes**

Senior Executive Assistant  
[epormes@thegef.org](mailto:epormes@thegef.org)  
+1 202 473 8736

**Claus Pram Astrup**

Advisor to the Chief Executive Officer  
[castrup@worldbank.org](mailto:castrup@worldbank.org)  
+ 1 202 478 7270

**Julienne Kouame**

Program Analyst  
[jkouame@thegef.org](mailto:jkouame@thegef.org)  
+1 202 473 8736

**Diego Riano Posada**

Special Assistant  
[drianoposada@thegef.org](mailto:drianoposada@thegef.org)  
+1 202 473 1444

## Communications

**Robert Bisset**

Head of Communications  
[rbisset@thegef.org](mailto:rbisset@thegef.org)  
+1 202 458 5191

**Patrizia Cocca**

Communications Officer and KM Coordinator  
[pcocca@thegef.org](mailto:pcocca@thegef.org)  
+1 202 458 0234

**Alua Satybaldina-Kennedy**

Communications Consultant  
[asatybaldina@worldbank.org](mailto:asatybaldina@worldbank.org)

**Christian Hofer**

Senior Communications Officer  
[chofer@thegef.org](mailto:chofer@thegef.org)  
+1 202 458 0936

**Camila Perez Gabilondo**

Communications Associate  
[cperez@thegef.org](mailto:cperez@thegef.org)  
+1 202 458 0895

**Olivier Besson**

Program Assistant  
[obesson@thegef.org](mailto:obesson@thegef.org)  
+1 202 473-8935

---

Mailing Address:

**GEF Secretariat**

1818 H Street, NW, MSN N8-800  
Washington, D.C. 20433  
+1 202 473 0508; Fax: +1 202 522 3240/3245

## POLICY AND OPERATIONS

### Francoise Clottes

Director

[fclottes@thegef.org](mailto:fclottes@thegef.org)

+1 202 473 8471

#### Akila Nazneen

Senior Financial Assistant

[anazneen@thegef.org](mailto:anazneen@thegef.org)

+1 202 473 1760

#### Amanda Adams

Program Assistant

[aadams@thegef.org](mailto:aadams@thegef.org)

+1 202 473 9878

#### Christina Bogyo

Senior Program Assistant

[cbogyo@thegef.org](mailto:cbogyo@thegef.org)

+1 202 473 6974

#### Christine Roehrer

Coordinator –Lead Results Based Management

[croehrer@worldbank.org](mailto:croehrer@worldbank.org)

+1 202 473-0337

#### Deepak Kataria

Coordinator - Information Technology

[dkataria@thegef.org](mailto:dkataria@thegef.org)

+1 202 473 3881

#### Gabriella Richardson-Temm

Coordinator – Gender and Social Issues

[grichardsontemm@thegef.org](mailto:grichardsontemm@thegef.org)

#### Henry Salazar

Coordinator - Operations

[hsalazar@thegef.org](mailto:hsalazar@thegef.org)

+1 202 473 8226

#### Herbert Acquay

Manager - Policy, Partnerships and Operations

[hacquay@worldbank.org](mailto:hacquay@worldbank.org)

+1 202 473 1043

#### Juman Byun

Business Solutions Officer

[jbyun@thegef.org](mailto:jbyun@thegef.org)

+1 202 458 7987

#### Knut Roland Sundstrom

Coordinator - Policy and Strategy

[ksundstrom@thegef.org](mailto:ksundstrom@thegef.org)

+1 202 473 7510

#### Lesly Rigaud

Client Technologies Officer

[lrigaud@thegef.org](mailto:lrigaud@thegef.org)

+1 202 473 3881

#### Minna Maria Kononen

Country Relations Officer

[nkononen@thegef.org](mailto:nkononen@thegef.org)

+1 202 473 9402

#### Naiying Peng

Operations Analyst

[npeng@thegef.org](mailto:npeng@thegef.org)

+1 202 458 9580

#### Nicolas Alejandro Marquez Pizzanelli

Operations Analyst

[nmarquez@thegef.org](mailto:nmarquez@thegef.org)

+1 202 473 9522

#### Olha Krushelnytska

Operations Officer

[okrushelnytska@thegef.org](mailto:okrushelnytska@thegef.org)

+1 202 458 5839

**Omid Parhizkar**  
Operations Officer  
[oparhizkar@thegef.org](mailto:oparhizkar@thegef.org)  
+1 202 458 2186

**Pilar Barrera**  
Coordinator - Partnerships and  
Resource Mobilization  
[pbarrera@thegef.org](mailto:pbarrera@thegef.org)  
+1 202 458 9891

**Raul Rodriguez**  
Temporary  
[rrodriguez@thegef.org](mailto:rrodriguez@thegef.org)

**Regine Mpoyi**  
Program Assistant  
[rmpoyi@thegef.org](mailto:rmpoyi@thegef.org)  
+1 202 473 2754

**Seo-Jeong Yoon**  
Policy Officer  
[syoon@thegef.org](mailto:syoon@thegef.org)  
+1 202 473 7832

**Susan Waithaka**  
Country Relations Officer  
[swaithaka1@thegef.org](mailto:swaithaka1@thegef.org)  
+1 202 473 5457

**William Ehlers**  
Coordinator – Country Relations/  
Secretary to the Council  
[wehlers@thegef.org](mailto:wehlers@thegef.org)  
+1 202 458 9436

**Oreste Maia Andrade**  
Operations Analyst  
[omaiaandradejr@thegef.org](mailto:omaiaandradejr@thegef.org)  
+1 202 458 9387

**Quynh Xuan Thi Phan**  
Senior Financial Specialist  
[qphan1@worldbank.org](mailto:qphan1@worldbank.org)  
+1 202 458 4760

**Ramon Prudencio C de Mesa**  
Operations Officer  
[rmesa@thegef.org](mailto:rmesa@thegef.org)  
+1 202 458 9285

**Robert Schreiber**  
Program Coordinator  
[rschreiber@thegef.org](mailto:rschreiber@thegef.org)  
+1 202 458 0288

**Sonja Sabita Teelucksingh**  
Senior Environmental Specialist  
[steelucksingh@thegef.org](mailto:steelucksingh@thegef.org)  
+1 202 458 4004

**Thomas Biegel**  
Consultant  
[tbiegel@thegef.org](mailto:tbiegel@thegef.org)  
+1 202 473 9252

**Yasemin Biro**  
Coordinator - Knowledge Management  
[ybiro@thegef.org](mailto:ybiro@thegef.org)  
+1 202 473 1550

---



## PROGRAMS

### **Gustavo Fonseca**

Director

[gfonseca@thegef.org](mailto:gfonseca@thegef.org)

+ 1 202 458 4818

#### **Anil Bruce Sookdeo**

Chemicals and Waste Focal Area Coordinator

[asookdeo@thegef.org](mailto:asookdeo@thegef.org)

+1 202 458 0683

#### **Astrid Hillers**

Senior Environmental Specialist

[ahillers@thegef.org](mailto:ahillers@thegef.org)

+1 202 458 8173

#### **Christian Severin**

International Waters Focal Area Coordinator

[cseverin@thegef.org](mailto:cseverin@thegef.org)

+1 202 458 2001

#### **Cyrille Barnerias**

Senior Environment Specialist

[cbarnerias@thegef.org](mailto:cbarnerias@thegef.org)

+1 202 473 8871

#### **Evelyn Swain**

Senior Environment Specialist

[eswain@thegef.org](mailto:eswain@thegef.org)

+1 202 473 1151

#### **Flavius Mihaies**

Consultant, Climate and Chemicals

[fmihaies@thegef.org](mailto:fmihaies@thegef.org)

+1 202 560 4934

#### **Hannah Fairbank**

Senior Biodiversity Specialist

[hfairbank@thegef.org](mailto:hfairbank@thegef.org)

#### **Asha Imani Bobb Semple** Operations

Analyst

[abobbsemple@thegef.org](mailto:abobbsemple@thegef.org)

+1 202 473 989

#### **Chizuru Aoki**

Lead Environmental Specialist -

Multilateral Environmental

Agreements [caoki@thegef.org](mailto:caoki@thegef.org)

+1 202 473 6068

#### **Claude Gascon**

Lead Program Manager

[cgascon@thegef.org](mailto:cgascon@thegef.org)

+1 202 458 9755

#### **David Rodgers**

Climate Change Mitigation Focal Area

Coordinator

[drodgers@thegef.org](mailto:drodgers@thegef.org)

+1 202 458 9869

#### **Dustin Schinn**

Climate Change Specialist

[dschinn@thegef.org](mailto:dschinn@thegef.org)

+1 202 458 1234

#### **Fareeha Iqbal**

Senior Climate Change Specialist

[fiqbal1@thegef.org](mailto:fiqbal1@thegef.org)

+1 202 458 9593

#### **Glynis Barber**

Program Assistant

[gbarber@thegef.org](mailto:gbarber@thegef.org)

+1 202 473 9647

#### **Ibrahima Sow**

Africa Regional Coordinator

[isow@thegef.org](mailto:isow@thegef.org)

+ 1 202 473 2716

**Jaime Cavalier**  
Senior Biodiversity Specialist  
[jcavalier@thegef.org](mailto:jcavalier@thegef.org)  
+1 202 473 4886

**Jean-Marc Sinnassamy**  
Senior Environmental Specialist  
[jsinnassamy@thegef.org](mailto:jsinnassamy@thegef.org)  
+1 202 473 8060

**Katya Yuh Kuang-Idba**  
Climate Change Specialist  
[kkuangidba@thegef.org](mailto:kkuangidba@thegef.org)  
+1 202 473 4364

**Kettly Denis**  
Program Assistant  
[kdenis@thegef.org](mailto:kdenis@thegef.org)  
+1 202 473 0825

**Leah Karrer**  
Senior Environmental Specialist  
[lkarrer@thegef.org](mailto:lkarrer@thegef.org)  
+1 202 473 8364

**Mark Zimsky**  
Latin America Regional Coordinator/  
Biodiversity Focal Area Coordinator  
[mzimsky@thegef.org](mailto:mzimsky@thegef.org)  
+1 202 473 7855

**Milena Gonzalez Vasquez**  
Junior Professional Associate  
[mgonzalezvasquez@thegef.org](mailto:mgonzalezvasquez@thegef.org)  
+1 202 458 1284

**Ming Yang**  
Senior Climate Change Specialist  
[myang@thegef.org](mailto:myang@thegef.org)  
+1 202 473 5707

**Mohamed Imam Bakarr**  
Lead Environmental Specialist - Program  
Strategy [mbakarr@thegef.org](mailto:mbakarr@thegef.org)  
+1 202 458 8890

**Monica Fernandes**  
Senior Program Assistant  
[mfernandes@thegef.org](mailto:mfernandes@thegef.org)  
+1 202 473 9647

**Nhu Quynh Phan**  
Program Assistant  
[nphan@thegef.org](mailto:nphan@thegef.org)  
+1 202 473 4236

**Paul Hartman**  
Senior Environmental Specialist  
[phartman@thegef.org](mailto:phartman@thegef.org)

**Pascal Martinez**  
Senior Climate Change Specialist  
[pmartinez2@thegef.org](mailto:pmartinez2@thegef.org)  
+1 202 458-9755

**Saliha Dobardzic**  
Senior Climate Change Specialist  
[sdobardzic@thegef.org](mailto:sdobardzic@thegef.org)  
+1 202 473 5943

**Shakil Kayani**  
Program Assistant  
[skayani@thegef.org](mailto:skayani@thegef.org)  
+1 202 458 4680

**Sarah Wyatt**  
Operations Analyst  
[swyatt@thegef.org](mailto:swyatt@thegef.org)  
+1 202 473 0534

**Steffen Hansen**  
Environmental Specialist  
[shansen@thegef.org](mailto:shansen@thegef.org)  
+1 202 458 8796

**Tigest Tirfe**  
Program Assistant  
[ttirfe@thegef.org](mailto:ttirfe@thegef.org)  
+1 202 458 9297

**Ulrich Apel**  
Europe and Central Asia Regional Coordinator/  
Land Degradation Focal Area Coordinator  
[uapel@thegef.org](mailto:uapel@thegef.org)  
+1 202 473 2573

**Xiaomei Tan**  
Senior Climate Change Specialist  
[xtan1@thegef.org](mailto:xtan1@thegef.org)  
+1 202 473 7448

---

## INDEPENDENT EVALUATION OFFICE

### Juha Uitto

Director

GEF Independent Evaluation Office

[juitto@thegef.org](mailto:juitto@thegef.org)

#### Anupam Anand

Evaluation Officer

[aanand2@thegef.org](mailto:aanand2@thegef.org)

+202-473-3147

#### Geeta Batra

Deputy Director and  
Chief Evaluation Officer

[gbatra@thegef.org](mailto:gbatra@thegef.org)

+202-473-4442

#### Carlo Carugi

Senior Evaluation Officer

[ccarugi@thegef.org](mailto:ccarugi@thegef.org)

+1 202 473 8154

#### Anna Viggh

Senior Evaluation Officer

[aviggh@worlbank.org](mailto:aviggh@worlbank.org)

+1 202 4738896

#### Kseniya Temnenko

Knowledge Management Officer

[ktemnenko@thegef.org](mailto:ktemnenko@thegef.org)

+1 202 458 4908

#### Jeneen Garcia

Evaluation Officer

[jgarcia2@thegef.org](mailto:jgarcia2@thegef.org)

+1 202 458 2719

#### Francisco Grahammer

Information Analyst

[fgrahammer@thegef.org](mailto:fgrahammer@thegef.org)

+1 202 473 4914

#### Kyoko Matsumoto

Senior Evaluation Officer

[kmatsumoto@thegef.org](mailto:kmatsumoto@thegef.org)

+1 202 473 2609

#### Marie-Constance Manuella Koukoui

Senior Executive Assistant

[mkoukoui@thegef.org](mailto:mkoukoui@thegef.org)

+1 202 458 9682

#### Khondoker Tanveer Haider

Consultant

[khaider@thegef.org](mailto:khaider@thegef.org)

#### Neeraj Kumar Negi

Senior Evaluation Officer

[nnegi1@thegef.org](mailto:nnegi1@thegef.org)

+1 202 473 2259

#### Juan Portillo

Senior Operations Officer

[jportillo@worlbank.org](mailto:jportillo@worlbank.org)

+1 202 473 6056

#### Baljit Wadhwa

Senior Evaluation Officer

[bwadhwa@worlbank.org](mailto:bwadhwa@worlbank.org)

+1 202 473 0266

#### Dennis Bours

Evaluation Officer

[sdbours@thegef.org](mailto:sdbours@thegef.org)

+1 202 458 9153

#### Malac Kabir

Research Assistant

[mkabir4@thegef.org](mailto:mkabir4@thegef.org)

+1 202 473 1808

#### Molly Watts

Evaluation Analyst

[mwatts1@thegef.org](mailto:mwatts1@thegef.org)

+1 202 473 3675

#### Sara El Choufi

Evaluation Analyst

[selchoufi@thegef.org](mailto:selchoufi@thegef.org)

+1 202 458 7069

#### Peixuan Zhou

Evaluation Analyst

[pzhou2@thegef.org](mailto:pzhou2@thegef.org)

+1 202 473 1703

#### Evelyn Chihuguyu

Program Assistant

[echihuguyu@thegef.org](mailto:echihuguyu@thegef.org)

+1 202 473 0654

#### Laura Reynolds Nissley

Consultant

[lnissley@thegef.org](mailto:lnissley@thegef.org)

## ADAPTATION FUND BOARD SECRETARIAT

**Mikko Antti Ollikainen**  
Manager  
[mollikainen@adaptation-fund.org](mailto:mollikainen@adaptation-fund.org)  
+1 202 458 8912

**Daouda Ben Oumar Ndiaye**  
Senior Climate Change Specialist  
[dndiaye@adaptation-fund.org](mailto:dndiaye@adaptation-fund.org)  
+1 202 473 4611

**Silvia Mancini**  
Operations Officer  
[smancini@adaptation-fund.org](mailto:smancini@adaptation-fund.org)

**Young Hee Lee**  
Operations Analyst  
[ylee12@adaptation-fund.org](mailto:ylee12@adaptation-fund.org)  
+1 202 473 8219

**Aya Mimura**  
Operations Associate  
[amimura@adaptation-fund.org](mailto:amimura@adaptation-fund.org)  
+1 202 458 7347

**Farayi Onias Madziwa**  
Program Officer  
[fmadziwa@adaptation-fund.org](mailto:fmadziwa@adaptation-fund.org)  
+1 202 458 5184

**Sophie Hans-Moevi**  
Senior Program Assistant  
[shansmoevi@adaptation-fund.org](mailto:shansmoevi@adaptation-fund.org)  
+1 202 473 0701

**Hugo Remaury**  
Junior Professional Associate  
[hremaury@adaptation-fund.org](mailto:hremaury@adaptation-fund.org)  
+1 202 473 5463

**Matthew Pueschel**  
Consultant  
[mpueschel@adaptation-fund.org](mailto:mpueschel@adaptation-fund.org)  
+1 202 473 6743

**Alicia Marie Austin**  
Temporary  
[aaustin@adaptation-fund.org](mailto:aaustin@adaptation-fund.org)  
+1 202 458 9758

**Anni Rein**  
Temporary  
[arein@adaptation-fund.org](mailto:arein@adaptation-fund.org)  
+1 202 458 9758

---

# GEF DIRECTORY OF ADDRESSEES

## GEF Secretariat

**GEF Secretariat<sup>1</sup>**  
**Program Coordination Registry**  
1818 H Street, NW  
Washington, D.C. 20433, USA  
[gcoordination@thegef.org](mailto:gcoordination@thegef.org)

Attn: Mr. Henry Salazar  
Coordinator - Operations  
[hsalazar@thegef.org](mailto:hsalazar@thegef.org)  
+1 202 473 8226

## GEF Trustee

**International Bank for Reconstruction and Development (The World Bank) Registry**  
1818 H Street, NW  
Washington, D.C. 20433, USA  
[geftrustee@worldbank.org](mailto:geftrustee@worldbank.org)

Mr. Praveen Desabatla  
Team Leader, DFPTF  
[pdesabatla@worldbank.org](mailto:pdesabatla@worldbank.org)  
+1 202 458 2099

## Convention Secretariats

**UN Convention on Biological Diversity (CBD)**  
413 rue Saint-Jacques, Suite 800  
Montreal, Quebec, Canada H2Y 1 N9  
[Secretariat@cbd.int](mailto:Secretariat@cbd.int)

Attn: Mr. Braulio F. de Souza Dias  
Executive Secretary  
*GEF Contact Person: Mr. Yibin Xiang*  
*Program Officer*  
[Yibin.xiang@cbd.int](mailto:Yibin.xiang@cbd.int)  
+1 514 288 2220

**UN Framework on Climate Change Convention (UNFCCC)**  
Haus Carstanjen  
Martin Luther King Strasse 8  
53175 Bonn, Germany  
[secretariat@unfccc.int](mailto:secretariat@unfccc.int)

Attn: Ms. Patricia Espinosa  
Executive Secretary  
*GEF Contact Person(s):*  
- *Ms. Deschen Tsering*  
[DTsering@unfccc.int](mailto:DTsering@unfccc.int)  
- *Mr. Alejandro Kilpatrick*  
[AKilpatrick@unfccc.int](mailto:AKilpatrick@unfccc.int)  
  
[gefenabling.activities@unfccc.int](mailto:gefenabling.activities@unfccc.int)  
[gefprojects@unfccc.int](mailto:gefprojects@unfccc.int)

**Secretariat of the Basel, Rotterdam and Stockholm Conventions**  
UNEP International Environment House 1  
11-13 Chemin des Anemones  
1219 Chatelaine, Geneva, Switzerland

Attn: Dr. Rolph Payet  
Executive Secretary  
*Mr. Frank Moser*  
*GEF Focal Point*  
*Office of the Executive Secretary*  
[frank.moser@brsmeas.org](mailto:frank.moser@brsmeas.org)  
+41 22 917 8951

---

<sup>1</sup> GEF Secretariat's physical address: 1899 Pennsylvania Avenue, NW, Washington, D.C. 20006

---

**UN Convention to Combat Desertification  
(UNCCD)**

Herrmann-Ehlers Str. 10  
D-53113 Bonn, Germany  
[secretariat@unccd.int](mailto:secretariat@unccd.int)

Attn: Ms. Monique Barbut  
Executive Secretary

*GEF Contact Person: Ms. Anja Thust  
Program Officer, FCMI Unit*

[athust@unccd.int](mailto:athust@unccd.int)  
+49 228 815 2828

---

**Interim Secretariat of the Minamata Convention**

International Environment House 1  
13, chemin des Anémones  
CH-1219 Chatelaine, Geneva  
Switzerland

Mr. Jacob Duer  
Coordinator, Minamata Convention  
[jacob.duer@unep.org](mailto:jacob.duer@unep.org)  
+41 22 917 82 17

---

## STAP Panel and Secretariat

### Panel

**Rosina Bierbaum**

Chairperson

[rbierbau@umich.edu](mailto:rbierbau@umich.edu)

+1 734 763 8675

**Ralph E. Sims**

Panel Member on Climate Change Mitigation

[R.E.Sims@massey.ac.nz](mailto:R.E.Sims@massey.ac.nz)

+64 21 166 4555

**Brian Child**

Panel Member on Biodiversity

[bchild@ufl.edu](mailto:bchild@ufl.edu)

+352 392 0494

**Ricardo Barra**

Panel Member on Chemicals & Waste

[ricbarra@udec.cl](mailto:ricbarra@udec.cl)

56-41-2204002

**Annette Cowie**

Panel Member on Land Degradation

[annette.cowie@une.edu.au](mailto:annette.cowie@une.edu.au)

+61 2 677 28080

**Ferenc Toth**

Panel Member of Adaptation

[ferenc3toth@gmail.com](mailto:ferenc3toth@gmail.com)

+43 2236 864501

**Michael Stocking**

Advisor to the STAP Chair

[m.stocking@uea.ac.uk](mailto:m.stocking@uea.ac.uk)

+44 1603 592 339

**Thomas E. Lovejoy**

Advisor to the STAP Chair

[tlovejoy@unfoundation.org](mailto:tlovejoy@unfoundation.org)

### Secretariat

**Christopher Whaley**

STAP Secretary

[christopher.whaley@unenvironment.org](mailto:christopher.whaley@unenvironment.org)

+1 202 974 1318

**Guadalupe Duron**

Programme Officer

[guadalupe.duron@unenvironment.org](mailto:guadalupe.duron@unenvironment.org)

+1 202 974 1313

**Robin Burgess**

Programme Assistant

[robin.burgess@unenvironment.org](mailto:robin.burgess@unenvironment.org)

+1 202 974 1311

**Sarah Lebel**

Climate Adaptation and Resilience Specialist

[sarah.lebel@unenvironment.org](mailto:sarah.lebel@unenvironment.org)

+1 202 621 5036

**Virginia Gorsevski**

Senior Programme Officer

[virginia.gorsevski@unenvironment.org](mailto:virginia.gorsevski@unenvironment.org)

+1 202 621 5020

**Sunday A. Leonard (PhD)**

Senior Programme Officer

[sunday.leonard@unenvironment.org](mailto:sunday.leonard@unenvironment.org)

+ 33 (0) 1 44 37 19 98



## GEF Agency Secretariats

### **African Development Bank (AfDB) Registry**

Headquarters  
01 BP 1387 Abidjan 01  
Côte d'Ivoire  
[Gef\\_afdb@afdb.org](mailto:Gef_afdb@afdb.org)

Mr. Mahamat Assouyouiti  
GEF Coordinator  
[m.assouyouiti@afdb.org](mailto:m.assouyouiti@afdb.org)

*Copy to:*  
*Mr. Kurt Lonsway*  
*Division Manager, Environment and Climate Change*  
[k.lonsway@afdb.org](mailto:k.lonsway@afdb.org)

### **Asian Development Bank (ADB) Registry**

6 ADB Avenue  
Mandaluyong City 1550  
Metro Manila, Philippines  
[adbgef@adb.org](mailto:adbgef@adb.org)

Attn: Mr. Nessim Ahmad  
Deputy Director General, Sustainable Development and Climate Change Development and GEF Official Focal Point  
[njahmad@adb.org](mailto:njahmad@adb.org)

*Copy to:*  
*Mr. Bruce Dunn*  
*Principal Environment Specialist, Environment and Safeguards and ADB/GEF Coordinator*  
[bdunn@adb.org](mailto:bdunn@adb.org)  
+632 683 1922/ +632 683 1923

### **European Bank for Reconstruction and Development (EBRD) Registry**

One Exchange Square  
London EC2A 2JN, United Kingdom  
[ebrdgef@ebrd.com](mailto:ebrdgef@ebrd.com)

Attn: Ryan Alexander  
Associate Manager, Climate Finance  
[alexandr@ebrd.com](mailto:alexandr@ebrd.com)

### **United Nations Food and Agriculture Organization (FAO) Registry**

Viale Dell Terme di Caracalla  
00153 Rome, Italy  
[GEF-Coordination-Unit@fao.org](mailto:GEF-Coordination-Unit@fao.org)

Attn: Mr. Gustavo Merino  
Director, Investment Centre Division  
[TCI-Director@fao.org](mailto:TCI-Director@fao.org)  
[faogef@fao.org](mailto:faogef@fao.org)  
+3906 570 54477

*Copy to:*

*Mr. Jeffrey Griffin*  
*Senior Coordinator - GEF*  
*Investment Center Division*  
[Jeffrey.Griffin@fao.org](mailto:Jeffrey.Griffin@fao.org)  
+3906 570 55680

## GEF Agency Secretariats cont'd

### **Inter-American Development Bank (IDB) Registry**

1300 New York Avenue, NW  
Washington, D.C. 20577, USA  
[idb-gef@iadb.org](mailto:idb-gef@iadb.org)

### **International Bank for Reconstruction and Development (The World Bank) Registry**

1818 H Street, NW Washington,  
D.C. 20433, USA  
[wbgefoperations@worldbank.org](mailto:wbgefoperations@worldbank.org)

Ms. Emilia Battaglini GEF  
Executive Coordinator  
[ebattaglini@worldbank.org](mailto:ebattaglini@worldbank.org)  
+ 1 202 458 0378

*Copy to:*  
*Shaanti Kapila*  
[skapila@worldbank.org](mailto:skapila@worldbank.org)

### **International Fund for Agricultural Development (IFAD) Registry**

Via Paolo di Dono, 44  
00142 Rome, Italy  
[ECDmailbox@ifad.org](mailto:ECDmailbox@ifad.org)

Mr. Perin Saint-Ange  
Associate Vice President,  
Programme Management Department  
[p.saintange@ifad.org](mailto:p.saintange@ifad.org)  
+39 06 5459 2448

*Copy to:*  
*Ms. Margarita Astrálaga*  
*Director, Environment and Climate Division*  
[m.astralaga@ifad.org](mailto:m.astralaga@ifad.org)  
*Tel: +39 06 5459 2151*

*Ms. Sheila Mwanundu*  
[s.mwanundu@ifad.org](mailto:s.mwanundu@ifad.org)

*Ms. Aisha Nazario*  
[a.nazario@ifad.org](mailto:a.nazario@ifad.org)  
*Tel: +39 06 5459 2459*  
*Ms. Estibalitz Morras*  
[e.morras@ifad.org](mailto:e.morras@ifad.org)  
*Tel: +39 06 5459 2438*

### **United Nations Environment Programme (UN Environment) Registry**

United Nations Avenue  
Gigiri, PO Box 30552  
00100 Nairobi, Kenya  
[Unepgef@unep.org](mailto:Unepgef@unep.org)

Ms. Kelly West  
GEF Coordinator  
[Kelly.West@unep.org](mailto:Kelly.West@unep.org)  
+254 20 762 4147

Local Office:

900 17th Street, NW  
Suite 506, Washington, D.C. 20006

## GEF Agency Secretariats cont'd

**United Nations Industrial Development  
Organization (UNIDO) Registry**  
Vienna International Centre  
PO Box 300  
A-1400 Vienna, Austria  
[gef@unido.org](mailto:gef@unido.org)

Mr. Juergen Hierold  
GEF Coordinator  
[J.Hierold@unido.org](mailto:J.Hierold@unido.org)  
+43 1 26026 4565

*Copy to:*  
*Ms. Pamela Mikschofsky*  
[p.mikschofsky@unido.org](mailto:p.mikschofsky@unido.org)

**United Nations Development Programme  
(UNDP) Registry**  
304 East 45th Street  
New York, NY 10017, USA  
[undpgef@undp.org](mailto:undpgef@undp.org)

Attn: Ms. Adriana Dinu  
GEF Executive Coordinator  
[Adriana.dinu@undp.org](mailto:Adriana.dinu@undp.org)  
+1 212 906 5143

## GEF Project Agency Secretariats

**Corporación Andina de Fomento (CAF)**  
380 Enrique Canaval Moreyra Ave., 13th Floor,  
San Isidro, Lima  
Lima 27, Peru  
[CAFGEF@caf.com](mailto:CAFGEF@caf.com)

Attn: René Gómez García Palao  
Senior Executive  
[rgomezgarcia@caf.com](mailto:rgomezgarcia@caf.com)  
+511-710-8530

*Copy to:*  
*Ms. Ligia Castro de Doens,*  
*Director*  
*Environment*  
[lcastro@caf.org](mailto:lcastro@caf.org)

**Conservation International (CI)**  
2011 Crystal Drive, Suite 500  
Arlington VA, 22202  
USA  
[CIGEF@conservation.org](mailto:CIGEF@conservation.org)

Attn: Mr. Miguel Morales  
Vice President/ Managing Director  
CI-GEF Project Agency  
[mamorales@conservation.org](mailto:mamorales@conservation.org)

*Copy to:*  
[osamaroo@conservation.org](mailto:osamaroo@conservation.org)

## GEF Project Agency Secretariats cont'd

**Development Bank of Southern Africa  
(DBSA)**

1258 Lever Road, Headway Hill  
Midrand, 1685  
South Africa  
[DBSAGEF@dbsa.org](mailto:DBSAGEF@dbsa.org)

Attn: Ms. Nomsa T. Zondi  
GEF Coordinator  
[nomsaz@dbsa.org](mailto:nomsaz@dbsa.org)  
+27 11 313 3491

**Foreign Economic Cooperation Office  
(FECO)**

Ministry of Environmental Protection  
ECO Building  
No.5 Houyingfang Hutong  
Xicheng District, Beijing 100035, China  
[FECOGEF@mepfeco.org.cn](mailto:FECOGEF@mepfeco.org.cn)

Attn: Mr. Xiao Xuezhi  
Deputy Director General  
[xiao.xuezhi@mepfeco.org.cn](mailto:xiao.xuezhi@mepfeco.org.cn)  
+ 86-10-82268807

*Copy to:*  
*Ms. Chen Haijun*  
*Director,*  
[chen.haijun@mepfeco.org.cn](mailto:chen.haijun@mepfeco.org.cn)  
+ 86-10-82268846

Ms. Yan Wei  
Senior Project Manager  
[yan.wei@mepfeco.org.cn](mailto:yan.wei@mepfeco.org.cn)  
+ 86-10-82268848

**International Union for Conservation of  
Nature (IUCN)**

Rue Mauverney, 28  
CH-1196 Gland,  
Switzerland  
[IUCNCEF@iucn.org](mailto:IUCNCEF@iucn.org)

Attn: Cyrie Sendashonga  
Global Director, Policy and Programme  
[Cyriaque.Sendashonga@iucn.org](mailto:Cyriaque.Sendashonga@iucn.org)  
+41 22 999 03 17

*Copy to:*  
*Mr. Jean-Yves Pirot,*  
*Head, GEF Coordination Unit*  
[jean-yves.pirot@iucn.org](mailto:jean-yves.pirot@iucn.org)  
+41 22 999 02 56

*Mr. Sébastien Delahaye*  
*Portfolio Manager*  
*GEF Coordination Unit*  
[Sebastien.Delahaye@iucn.org](mailto:Sebastien.Delahaye@iucn.org)  
+41 22 999 02 51

## GEF Project Agency Secretariats cont'd

---

**World Wildlife Fund, Inc. (WWF-US)**  
1250 24th St, NW  
Washington, DC 20037-1193  
[WWFGEF@wwfus.org](mailto:WWFGEF@wwfus.org)

Attn: Dr. David S. McCauley  
Senior Vice President  
Policy and Government Affairs  
[david.mccauley@wwfus.org](mailto:david.mccauley@wwfus.org)  
+1-202-495-4159

*Copy to:*  
*Mr. Hervé Lefeuve*  
*Senior Director, GEF Relations and*  
*GEF Coordinator*  
[Herve.Lefeuve@wwfus.org](mailto:Herve.Lefeuve@wwfus.org)  
+1-202-459-8533

**Fundo Brasileiro para a Biodiversidade (FUNBIO)**  
Rua Voluntários da Pátria, 286 5º andar  
Botafogo, Rio de Janeiro, RJ  
22270-014  
[funbiogef@funbio.org.br](mailto:funbiogef@funbio.org.br)

Attn: Fabio Heuseler Ferreira Leite  
GEF Coordinator  
[fabio.leite@funbio.org.br](mailto:fabio.leite@funbio.org.br)  
+ 55 21 2123-5326

*Copy to:*  
[agenciageg@funbio.org.br](mailto:agenciageg@funbio.org.br)

**Banque Ouest Africaine de Développement (BOAD)**  
68 Avenue de La Liberation  
1172 - Lomé / Togo

Attn: Almamy Mbengue  
Director of Environment and  
Finance Climate,  
GEF Coordinator and Focal  
Point [ambengue@boad.org](mailto:ambengue@boad.org)  
+(228)22.232.525.24

*Copy to:*  
*Ibrahim Traore*  
*Principal Economist of environment,*  
*GEF Alternate Focal Point*  
[itraore@boad.org](mailto:itraore@boad.org)  
+1(228)22.23.26.92

*Copy to:*  
*Ms. Sangare-Toure Fatoumata*  
[ftoure@boad.org](mailto:ftoure@boad.org)

---

**DISTRIBUTION LIST WHEN SUBMITTING PROJECT PROPOSALS  
FOR GEF CEO APPROVAL/ENDORSEMENT**

As a rule, all GEF Agencies are expected to circulate their project proposals to the GEF Secretariat, GEF Agencies, and STAP and to the relevant Convention Secretariat.

**Standard Distribution List for all projects (PIF, PPG, FSP, MSP, and EA):**

gcoordination@thegef.org  
STAP.Secretariat@unenvironment.org  
christopher.whaley@unenvironment.org  
adbgef@adb.org  
bdunn@adb.org  
njahmad@adb.org  
gef\_afdb@afdb.org  
m.assouyouti@afdb.org  
k.lonsway@afdb.org  
ambengue@boad.org  
dtoe@boad.org  
itraore@boad.org  
straore@boad.org  
ytoure@boad.org  
CAFGEF@caf.com  
rgomezgarcia@caf.com  
lcastro@caf.org  
CIGEF@conservation.org  
lspijkerman@conservation.org  
osamaroo@conservation.org  
DBSAGEF@dbsa.org  
nomsaz@dbsa.org  
ebrdgef@ebrd.com  
simonetm@ebrd.com  
GEF-Coordination-Unit@fao.org  
faogef@fao.org  
TCI-Director@fao.org  
Jeffrey.Griffin@fao.org  
FECOGEF@mepfeco.org.cn  
xiao.xuezh@mepfeco.org.cn  
chen.haijun@mepfeco.org.cn  
yan.wei@mepfeco.org.cn  
FUNBIOGEF@funbio.org.br  
agenciagef@funbio.org.br  
fabio.leite@funbio.org.br  
idb-gef@iadb.org  
jbonilla@iadb.org  
paolap@iadb.org  
ECDmailbox@ifad.org  
p.saintange@ifad.org  
m.astralaga@ifad.org  
l.laganda@ifad.org  
a.nazario@ifad.org  
IUCNGEF@iucn.org  
Cyriaque.Sendashonga@iucn.org  
Sebastien.Delahaye@iucn.org  
jean-yves.piro@iucn.org  
unepgef@unep.org  
brennan.vandyke@unep.org  
Kelly.West@unep.org  
gef@unido.org  
j.hierold@unido.org  
p.mikschofsky@unido.org  
undpgef@undp.org  
adriana.dinu@undp.org  
wbgefoperations@worldbank.org  
WWFGEF@wwfus.org  
David.McCauley@wwfus.org  
Herve.Lefeuvre@wwfus.org

**To be included in the Standard Distribution List as appropriate:**

*For Biodiversity Projects:*

secretariat@cbd.int  
yibin.xiang@cbd.int

*For Climate Change Projects:*

gefprojects@unfccc.int  
gefenabling.activities@unfccc.int

*For Land Degradation Projects:*

secretariat@unccd.int  
athust@unccd.int

*For Mercury Projects*

jacob.duer@unep.org  
shelia.logan@unep.org

*For POPs Projects:*

ta@brsmeas.org  
maria.cardenas@brsmeas.org  
frank.moser@brsmeas.org