



# PROGRAM MANAGEMENT

**December 5<sup>th</sup>, 2016 - December 9<sup>th</sup>, 2016**

A weekly update on the GEF Program Management

## Calendar

- Council Meeting Schedules
- GEFOP Meeting Schedules

## Projects

- GEF Project Concepts, Proposals, Draft Documents Received
- Project Clearances, Approvals, Endorsements and Other Comments

## Contacts

- GEF Secretariat Staff
- GEF Agencies
- GEF Trustee Convention Secretariats

## Communications

- Introducing new staff to the GEFSEC
- Announcements

## SCHEDULE OF FORTHCOMING GEF COUNCIL MEETINGS

Meetings/Consultations	May 2017
GEF Council Consultations with Civil Society	May 22
GEF Council Meeting	May 23 - 25
LDCF/SCCF Council Meeting	May 25
STAP Panel Meetings	

### GEF Work Program Calendar for 2017

Events	May CWP
Receipt deadline for PIF/PFD	March 3
GEF GPU Technical Clearance Deadline	March 31
GEF PPO Clearance Deadline	April 7
CEO WP Approval	April 14
Draft Cover Note to Agencies, ConvSec, STAP	April 18
Inter-Agency Meeting with ConvSec, STAP	April 20
Posting of Work Program	April 25
Council Meeting	May 23-25
Council Approval	May 25

 **Kindly see below the link to the Compilation of Council Comments for the October 2016 Work Program.**

<https://www.thegef.org/work-programs>

<https://www.thegef.org/work-program-documents/compilation-council-comments- october-2016-gef-work-program>

**Fiscal Year '16**  
**Country Support Program Activities**  
**Expanded Constituency Workshops**

**Constituency Meetings**

## Requests Received from GEF Agencies

December 5 - 9, 2016

GEF ID	IA ID	Type	Focal Area	Decision Sought	Proponent	Country	Project Title	Program Manager	Date Received
<b><u>AfDB</u></b>									
9488		FP	Climate Change	CEO endorsement of FSP	AfDB	Somalia	Rural Livelihoods' adaptation to climate change in the Horn of Africa - Phase II (RLACC II)	Dustin Schinn	1-Dec-16
<b><u>DBSA</u></b>									
9073		FP	Biodiversity	CEO endorsement of FSP	DBSA	South Africa	Unlocking Biodiversity Benefits through Development Finance in Critical Catchments	Jaime Cavelier	5-Dec-16
9085		FP	Climate Change	CEO endorsement of FSP	DBSA	South Africa	Equity Fund for the Small Projects Independent Power Producer Procurement Programme (SP-IPPPPP)	David Elrie Rodgers	5-Dec-16
<b><u>EBRD</u></b>									
9571		FP	Multi Focal Area	CEO PIF Clearance for WPI	EBRD	Regional (Bosnia-Herzegovina, Belarus, Georgia, Moldova, Turkey, Ukraine, Serbia)	Promoting Accelerated Uptake of Environmental Technologies and Promotion of Best Practices for Improved Water, Chemicals, and Waste Management in the Black Sea Basin	Steffen Hansen	1-Dec-16

GEF ID	IA ID	Type	Focal Area	Decision Sought	Proponent	Country	Project Title	Program Manager	Date Received
<b><u>FAO</u></b>									
9094		FP	Multi Focal Area	CEO endorsement of FSP	FAO	Regional (Kyrgyz Republic, Kazakhstan, Tajikistan, Turkmenistan, Turkey, Uzbekistan)	Integrated Natural Resources Management in Drought-prone and Salt-affected Agricultural Production Systems in Central Asia and Turkey (CACILM2)	Asha Bobb-Semple	30-Nov-16
9699		FP	Climate Change	CEO PIF Clearance for WPI	FAO	Zambia	Climate change adaptation in forest and agricultural mosaic landscapes	Dustin Schinn	6-Dec-16
9126		FP	Multi Focal Area	CEO endorsement of FSP	FAO	Global (Cote d'Ivoire, Cabo Verde, Senegal)	Coastal Fisheries Initiative- West Africa	Leah Karrer	7-Dec-16
<b><u>IADB</u></b>									
9058		FP	Biodiversity	CEO endorsement of FSP	IADB	Regional (Latin America and Caribbean)	Impact Investment in Support of the Implementation of the Nagoya Protocol on Access and Benefit Sharing (non-grant)	Jaime Cavelier	5-Dec-16
9698		FP	Multi Focal Area	CEO endorsement of FSP	IADB	Peru	National Platform for Sustainable Cities and Climate Change	Xiaomei Tan	6-Dec-16
<b><u>IUCN</u></b>									
4953		FP	Multi Focal Area	CEO endorsement of FSP	IUCN	Regional (Cote d'Ivoire, Guinea, Liberia, Sierra Leone)	Mano River Union Ecosystem Conservation and International Water Resources Management (IWRM) Project	Jean-Marc Sinnassamy	7-Dec-16

GEF ID	IA ID	Type	Focal Area	Decision Sought	Proponent	Country	Project Title	Program Manager	Date Received
<b>UNDP</b>									
9042	5492	FP	Climate Change	CEO endorsement of FSP	UNDP	Moldova	Moldova Sustainable Green Cities : Catalyzing Investment in Sustainable Green Cities in the Republic of Moldova Using a Holistic Integrated Urban Planning Approach	Xiaomei Tan	2-Dec-16
9054	5506	FP	International Waters	CEO endorsement of FSP	UNDP	Regional (Botswana, Lesotho, Namibia, South Africa)	Support to the Orange-Senqu River Strategic Action Programme Implementation	Astrid Hillers	5-Dec-16
6992	5427	FP	Multi Focal Area	CEO endorsement of FSP	UNDP	Myanmar	Ridge to Reef: Integrated Protected Area Land and Seascape Management in Tanintharyi	Ulrich Apel	5-Dec-16
6965	5029	FP	Multi Focal Area	CEO endorsement of FSP	UNDP	Indonesia	Strengthening Forest Area Planning and Management in Kalimantan	Paul Hartman	5-Dec-16
9342	5551	MSP	Climate Change	CEO MSP Approval	UNDP	Serbia	Climate Smart Urban Development Challenge	Ming Yang	6-Dec-16
9701	6048	EA	Chemicals and Waste	CEO EA Approval	UNDP	Kazakhstan	Minimata Initial Assessment	Evelyn Swain	6-Dec-16
9577	4970	FP	Multi Focal Area	CEO PIF Clearance for WPI	UNDP	Grenada	Climate Resilient Agriculture for Integrated Landscape Management	Sarah Wyatt	9-Dec-16
9704	5902	FP	Climate Change	CEO PIF Clearance for WPI	UNDP	Ethiopia	Upscaling community-based adaptation in Ethiopia	Dustin Schinn	9-Dec-16
9705	5880	FP	Biodiversity	CEO PIF Clearance for WPI	UNDP	Cabo Verde	Managing Multiple Sector threats on Marine Ecosystems to Achieve Sustainable Blue Growth	Cyrille Barnerias	9-Dec-16

GEF ID	IA ID	Type	Focal Area	Decision Sought	Proponent	Country	Project Title	Program Manager	Date Received
6920	5439	FP	Multi Focal Area	CEO endorsement of FSP	UNDP	Global (Indonesia, Papua New Guinea, Timor Leste)	Implementation of the Arafura and Timor Seas Regional and National Strategic Action Programs	Leah Karrer	9-Dec-16

## UNEP

9693		FP	Multi Focal Area	CEO PIF Clearance for WPI	UNEP	Vietnam	Natural Capital Accounting and Mainstreaming Marine and Coastal Ecosystem Services into Vietnam's Development Planning	Leah Karrer	5-Dec-16
9697		FP	Chemicals and Waste	CEO PPG approval	UNEP	Global	Global Knowledge Management and Exchange of Child Project Results Through Networking and Outreach Activities	Evelyn Swain	5-Dec-16
9702		FP	Land Degradation	CEO PIF Clearance for WPI	UNEP	South Africa	Restoration and Sustainable Management of Land for Resilient Livelihoods and Poverty Reduction in South Africa	Ulrich Apel	8-Dec-16
4739		FP	Biodiversity	CEO endorsement of FSP	UNEP	Cameroon	Participative Integrated Ecosystem Services Management Plans for Bakassi Post Conflict Ecosystems PINESMAP BPCE	Jaime Cavelier	8-Dec-16
9703		MSP	Biodiversity	CEO PIF Approval	UNEP	Timor Leste	Creating and Applying an Access and Benefit-Sharing Regime in Timor Leste	Rawleston Moore	8-Dec-16
5815		FP	Climate Change	CEO endorsement of FSP	UNEP	Regional (Bhutan, Cambodia, Lao PDR, Myanmar)	Building Climate Resilience of Urban Systems through Ecosystem-based Adaptation (EbA) in the Asia-Pacific Region.	Fareeha Iqbal	8-Dec-16

GEF ID	IA ID	Type	Focal Area	Decision Sought	Proponent	Country	Project Title	Program Manager	Date Received
<b>UNIDO</b>									
9695		FP	Chemicals and Waste	CEO PPG approval	UNIDO	Regional (Mongolia, Philippines)	Contribution Towards the Elimination of Mercury in the ASGM sector From Miners to Refiners	Ogawa Masako	5-Dec-16
<b>World Bank</b>									
9692	159562	FP	International Waters	CEO endorsement of FSP	World Bank	Madagascar	Second South West Indian Ocean Fisheries Governance and Shared Growth Project (SWIOFish2)	Astrid Hillers	5-Dec-16
9623	158604	FP	Multi Focal Area	CEO endorsement of FSP	World Bank	Congo	Strengthening the management of wildlife and improving livelihoods in northern Republic of Congo	Jaime Cavelier	5-Dec-16
9694		FP	Multi Focal Area	CEO PIF Clearance for WPI	World Bank	Indonesia	Acceleration Program of One Map Policy Implementation	Yoko Watanabe	5-Dec-16
9600		FP	Multi Focal Area	CEO PIF Clearance for WPI	World Bank	Indonesia	Acceleration Program of One Map Policy Implementation	Yoko Watanabe	5-Dec-16
9223		FP	Multi Focal Area	CEO endorsement of FSP	World Bank	China	Cities-IAP – China Child Project	Xiaomei Tan	6-Dec-16
9696		FP	Multi Focal Area	CEO endorsement of FSP	World Bank	Global	Market Shift to Deforestation Free Beef, Palm Oil and Soy	Paul Dolan	6-Dec-16
9700	158604	FP	Multi Focal Area	CEO endorsement of FSP	World Bank	Congo	Strengthening the management of wildlife and improving livelihoods in Northern Republic of Congo	Jaime Cavelier	7-Dec-16

# Responses to Proponents

December 5 - 9, 2016

ID	IA ID	Type	Focal Area	Decision Sought	Proponen	Country	Project Title	Program Manage	Response Date	Remarks
<b><u>AfDB</u></b>										
9497		FP	Multi Focal Area	CEO endorsement of FSP	AfDB	Niger	LCB-NREE Niger child project: Improving sustainable management of natural resources in Niger's Diffa region	Pascal Martinez	6-Dec-16	Review Sheet sent to Agency for FSP revision
9050		FP	Multi Focal Area	CEO PIF Clearance for WPI	AfDB	Chad	Building Resilience For Food Security and Nutrition in Chad's Rural Communities	Jean-Marc Sinnassamy	6-Dec-16	Review Sheet sent to Agency for PIF revision
<b><u>DBSA</u></b>										
9145		FP	Climate Change	CEO endorsement of FSP	DBSA, UNEP	South Africa	Cities-IAP: Building a Resilient and Resource Efficient Johannesburg: Increased Access to Urban Services and Improved Quality of Life	Xiaomei Tan	6-Dec-16	Review Sheet sent to Agency for FSP revision
<b><u>FAO</u></b>										
7996		FP	Climate Change	CEO PIF Clearance for WPI	FAO	Timor Leste	IkanAdapt: Strengthening the adaptive capacity and resilience of fisheries and aquaculture-dependent livelihoods in Timor-Leste	Saliha Dobardzic	7-Dec-16	Review Sheet sent to Agency for PIF revision
<b><u>IADB</u></b>										
9698		FP	Multi Focal Area	CEO endorsement of FSP	IADB	Peru	National Platform for Sustainable Cities and Climate Change	Xiaomei Tan	9-Dec-16	Review Sheet sent to Agency for FSP revision

ID	IA ID	Type	Focal Area	Decision Sought	Proponen	Country	Project Title	Program Manage	Response Date	Remarks
<b>IFAD</b>										
9134		FP	Multi Focal Area	CEO endorsement of FSP	IFAD, UNIDO	Senegal	Food-IAP: Agricultural Value Chains Resilience Support Project (PARFA)	Jean-Marc Sinnassamy	5-Dec-16	FSP endorsed by CEO
9523		FP	Multi Focal Area	CEO PIF Clearance for WPI	IFAD	Cameroon	Rural Youth Environmental Initiatives Promotion Project	Jean-Marc Sinnassamy	6-Dec-16	Review Sheet sent to Agency for PIF revision
<b>UNDP</b>										
6988	4978	FP	Climate Change	Council approval of PIF	UNDP	Guinea-Bissau	Strengthening the Resilience of Vulnerable Coastal Areas and Communities to Climate Change in Guinea Bissau	Rawleston Moore	22-Nov-16	PIF approved by Council
9654	5635	FP	International Waters	CEO PIF Clearance for WPI	UNDP	Regional (Indonesia, Cambodia, Lao PDR, Myanmar, Malaysia, Philippines, Vietnam)	Reducing Pollution and Preserving Environmental Flows in the East Asian Seas through the Implementation of Integrated River Basin Management in Eight ASEAN Countries	Leah Karrer	5-Dec-16	Review Sheet sent to Agency for PIF revision
6920	5439	FP	Multi Focal Area	CEO endorsement of FSP	UNDP	Global (Indonesia, Papua New Guinea, Timor Leste)	Implementation of the Arafura and Timor Seas Regional and National Strategic Action Programs	Leah Karrer	5-Dec-16	Review Sheet sent to Agency for FSP revision
9086	5499	FP	Multi Focal Area	CEO endorsement of FSP	UNDP	Indonesia	Sixth Operational Phase of the GEF Small Grants Programme in Indonesia	Maria Del Pilar Barrera Rey	6-Dec-16	Review Sheet sent to Agency for FSP revision
9179	5665	FP	Multi Focal Area	CEO endorsement of FSP	UNDP, WWF-US	Global	Comm-IAP: Adaptive Management and Learning	Paul Hartman	7-Dec-16	FSP recommended for endorsement (No council comments - awaiting agency's)

<b>ID</b>	<b>IA ID</b>	<b>Type</b>	<b>Focal Area</b>	<b>Decision Sought</b>	<b>Proponen</b>	<b>Country</b>	<b>Project Title</b>	<b>Program Manage</b>	<b>Response Date</b>	<b>Remarks</b>
9309	5749	MSP	Climate Change	CEO MSP Approval	UNDP	Global	The Climate Finance Aggregation Initiative for Developing Countries	Dustin Schinn	7-Dec-16	MSP sent to Agency for revision
9143	5578	FP	Multi Focal Area	CEO endorsement of FSP	UNDP	Nigeria	Food-IAP: Fostering Sustainability and Resilience for Food Security in Nigeria	Jean-Marc Sinnassamy	7-Dec-16	Review Sheet sent to Agency for FSP revision
9400	5670	FP	Multi Focal Area	CEO PIF Clearance for WPI	UNDP	Tanzania	Safeguarding Zanzibar's Forest and Coastal Habitats for Multiple Benefits	Jaime Cavelier	7-Dec-16	Review Sheet sent to Agency for PIF revision
9617	5896	FP	Multi Focal Area	CEO endorsement of FSP	UNDP	Brazil	Taking Deforestation Out of the Soy Supply Chain	Paul Hartman	8-Dec-16	FSP recommended for endorsement (Council Ltr circulating for CEO approval)

## UNEP

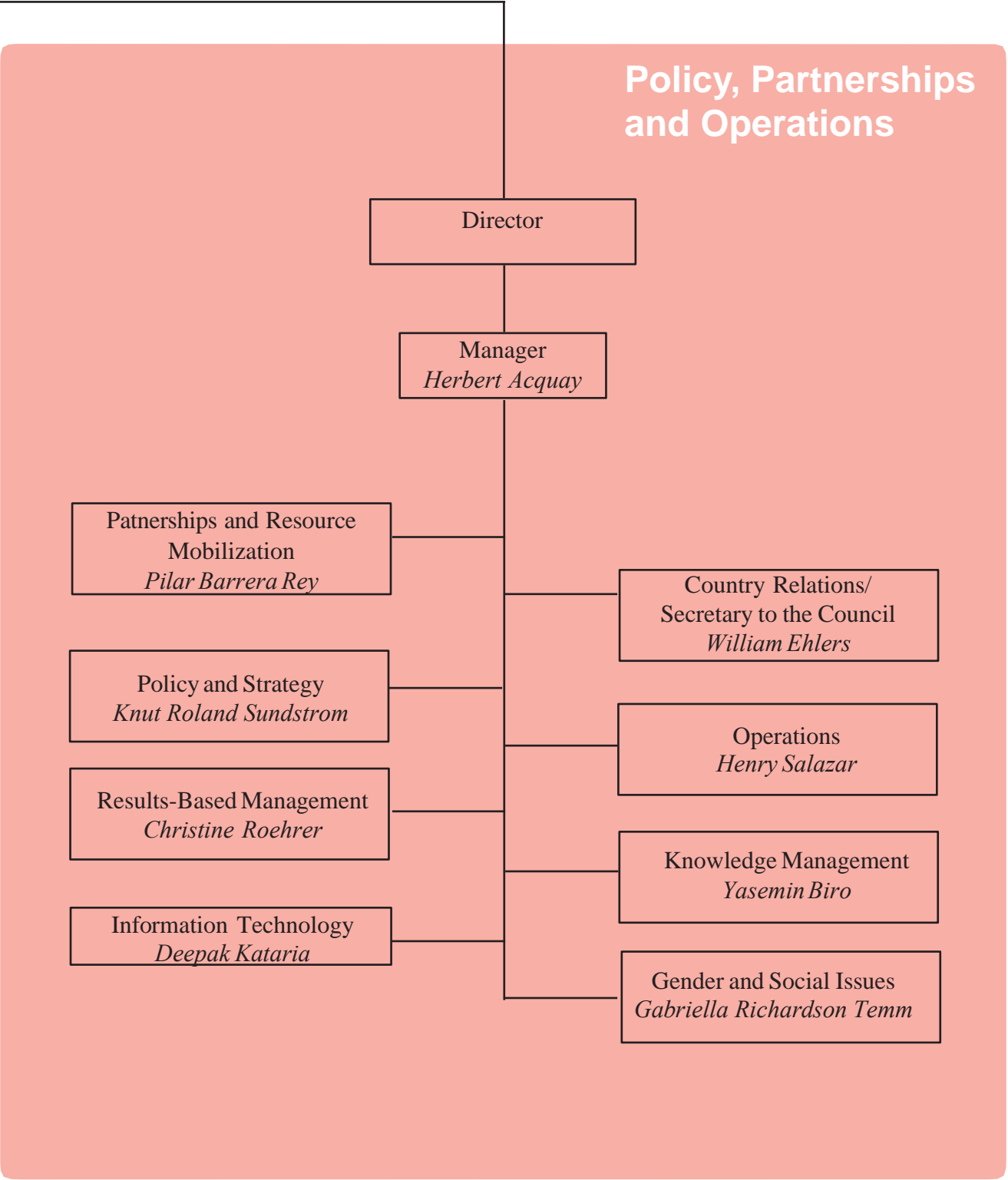
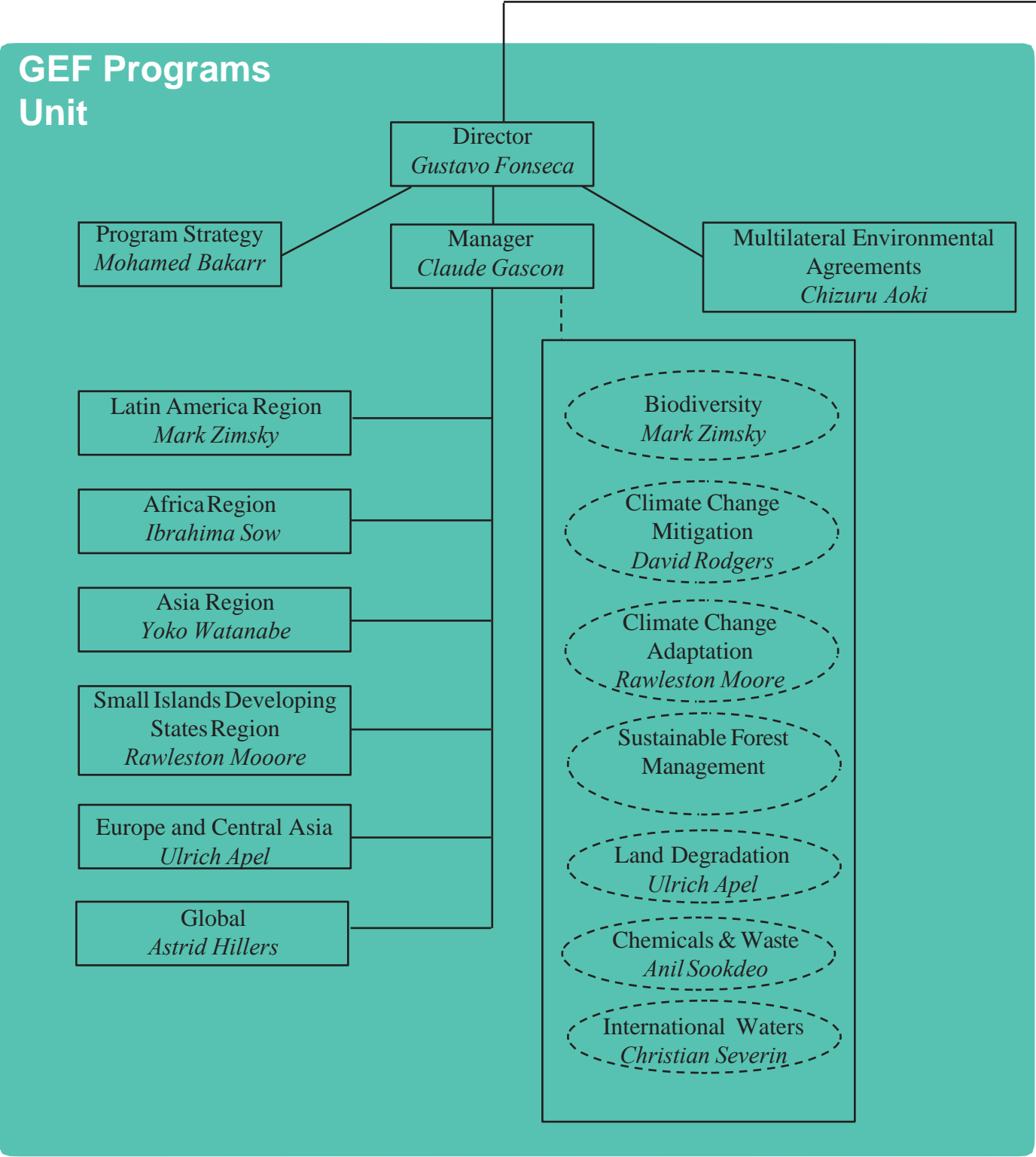
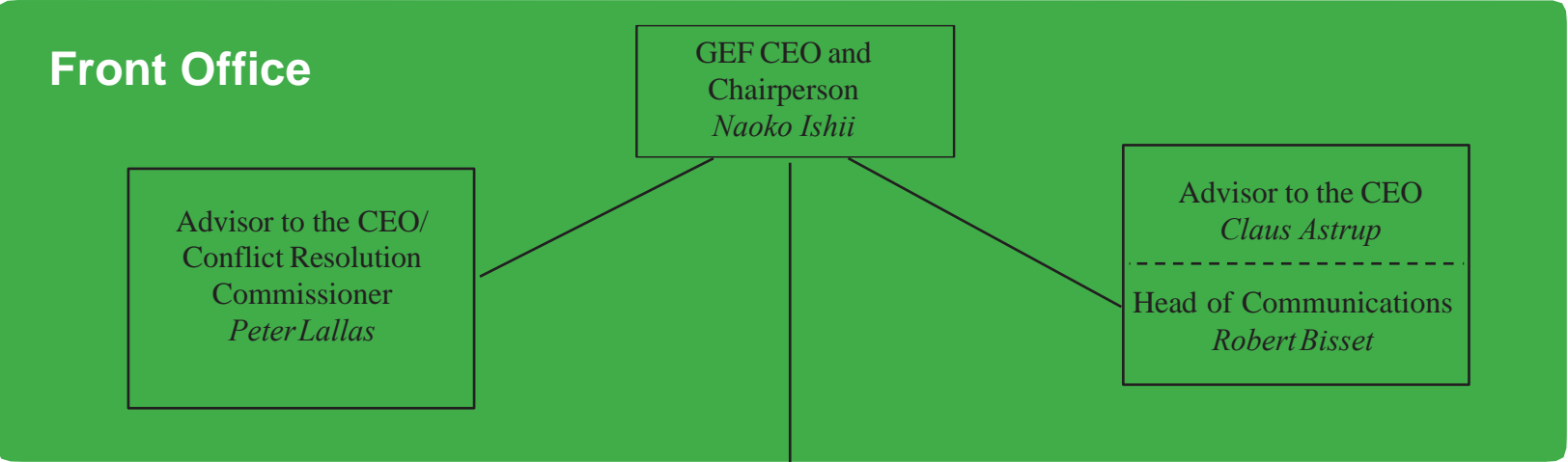
6926		FP	Climate Change	Council approval of PIF	UNEP	Lesotho	Strengthening Climate Services in Lesotho for Climate Resilient Development and Adaptation to Climate Change	Rawleston Moore	22-Nov-16	PIF approved by Council
6983		FP	Climate Change	Council approval of PIF	UNEP	Mozambique	Mozambique: Building Resilience in the Coastal Zone through Ecosystem Based Approaches to Adaptation (EbA).	Saliha Dobardzic	22-Nov-16	PIF approved by Council
6986		FP	Climate Change	Council approval of PIF	UNEP	Rwanda	Building the Capacity of Rwanda's Government to Advance the National Adaptation Planning Process	Knut Sundstrom	22-Nov-16	PIF approved by Council

<b>ID</b>	<b>IA ID</b>	<b>Type</b>	<b>Focal Area</b>	<b>Decision Sought</b>	<b>Proponen</b>	<b>Country</b>	<b>Project Title</b>	<b>Program Manage</b>	<b>Response Date</b>	<b>Remarks</b>
5283		FP	Biodiversity	CEO endorsement of FSP	UNEP	Regional (Angola, Lesotho, Madagascar, Malawi, Mozambique, Congo DR)	Multi-Country Project to Strengthen Institutional Capacity on LMO Testing in Support of National Decision-making	Jaime Cavelier	5-Dec-16	FSP endorsed by CEO
9678		MSP	Biodiversity	CEO MSP Approval	UNEP	Regional (Colombia, Mexico, Peru)	Generating Enhanced Political Will for Natural Resource Management and Conservation	Jaime Cavelier	5-Dec-16	MSP approved by CEO
5788		MSP	Land Degradation	CEO MSP Approval	UNEP	Cote d'Ivoire	Assessment of Land Degradation Dynamic in Coffee -Cocoa Production and Northern Ivory Coast to Promote SLM Practices and Carbon Stock Conservation ALDD SLM CSC	Jean-Marc Sinnassamy	5-Dec-16	MSP approved by CEO
9145		FP	Climate Change	CEO endorsement of FSP	DBSA, UNEP	South Africa	Cities-IAP: Building a Resilient and Resource Efficient Johannesburg: Increased Access to Urban Services and Improved Quality of Life	Xiaomei Tan	6-Dec-16	Review Sheet sent to Agency for FSP revision
9678		MSP	Biodiversity	CEO MSP Approval	UNEP	Regional (Colombia, Mexico, Peru)	Generating Enhanced Political Will for Natural Resource Management and Conservation	Jaime Cavelier	6-Dec-16	MSP recommended for CEO approval
9410		FP	Biodiversity	CEO PIF Clearance for WPI	UNEP	Regional (Marshall Islands, Niue, Tonga, Tuvalu)	Strengthening National and Regional Capacities to Reduce the Impact of Invasive Alien Species on Globally Significant Biodiversity in the Pacific	Sarah Wyatt	8-Dec-16	Review Sheet sent to Agency for PIF revision

<b>ID</b>	<b>IA ID</b>	<b>Type</b>	<b>Focal Area</b>	<b>Decision Sought</b>	<b>Proponen</b>	<b>Country</b>	<b>Project Title</b>	<b>Program Manage</b>	<b>Response Date</b>	<b>Remarks</b>
9134		FP	Multi Focal Area	CEO endorsement of FSP	IFAD, UNIDO	Senegal	Food-IAP: Agricultural Value Chains Resilience Support Project (PARFA)	Jean-Marc Sinnassamy	5-Dec-16	FSP endorsed by CEO
9683		FP	Climate Change	CEO PIF Clearance for WPI	UNIDO	Congo DR	Promotion of waste to energy options for sustainable urban management in the Democratic Republic of the Congo	Ming Yang	6-Dec-16	Review Sheet sent to Agency for PIF revision

## WWF-US

9179		FP	Multi Focal Area	CEO endorsement of FSP	UNDP, WWF-US	Global	Comm-IAP: Adaptive Management and Learning	Paul Hartman	7-Dec-16	FSP recommended for endorsement (No council comments - awaiting agency's)
------	--	----	------------------	------------------------	--------------	--------	--	--------------	----------	---



**Naoko Ishii**  
Chief Executive Officer and Chairperson  
[nishii@thegef.org](mailto:nishii@thegef.org)

## FRONT OFFICE

**Peter Lallas**

Advisor to the Chief Executive Officer  
[plallas@thegef.org](mailto:plallas@thegef.org)  
+1 202 473 9732

**Amornrat Ning Poopech**

Resource Management Officer  
[apoopech@thegef.org](mailto:apoopech@thegef.org)  
+1 202 458 4366

**Esther Pormes**

Senior Executive Assistant  
[epormes@thegef.org](mailto:epormes@thegef.org)  
+1 202 473 8736

**Claus Pram Astrup**

Advisor to the Chief Executive Officer  
[castrup@worldbank.org](mailto:castrup@worldbank.org)  
+ 1 202 478 7270

**Julienne Kouame**

Program Analyst  
[jkouame@thegef.org](mailto:jkouame@thegef.org)  
+1 202 473 8736

**Diego Riano Posada**

Special Assistant  
[drianoposada@thegef.org](mailto:drianoposada@thegef.org)  
+1 202 473 1444

## Communications

**Robert Bisset**

Head of Communications  
[rbisset@thegef.org](mailto:rbisset@thegef.org)  
+1 202 458 5191

**Patrizia Cocca**

Communications Officer and KM Coordinator  
[pcocca@thegef.org](mailto:pcocca@thegef.org)  
+1 202 458 0234

**Alua Satybaldina-Kennedy**

Communications Consultant  
[asatybaldina@worldbank.org](mailto:asatybaldina@worldbank.org)

**Christian Hofer**

Senior Communications Officer  
[chofer@thegef.org](mailto:chofer@thegef.org)  
+1 202 458 0936

**Camila Perez Gabilondo**

Communications Associate  
[cperez@thegef.org](mailto:cperez@thegef.org)  
+1 202 458 0895

---

Mailing Address:

**GEF Secretariat**

1818 H Street, NW, MSN N8-800  
Washington, D.C. 20433  
+1 202 473 0508; Fax: +1 202 522 3240/3245

## POLICY AND OPERATIONS

**Akila Nazneen**  
Financial Assistant  
[anazneen@thegef.org](mailto:anazneen@thegef.org)  
+1 202 473 1760

**Christina Bogyo**  
Senior Program Assistant  
[cbogyo@thegef.org](mailto:cbogyo@thegef.org)  
+1 202 473 6974

**Deepak Kataria**  
Coordinator - Information Technology  
[dkataria@thegef.org](mailto:dkataria@thegef.org)  
+1 202 473 3881

**Henry Salazar**  
Coordinator - Operations  
[hsalazar@thegef.org](mailto:hsalazar@thegef.org)  
+1 202 473 8226

**Juman Byun**  
Business Solutions Officer  
[jbyun@thegef.org](mailto:jbyun@thegef.org)  
+1 202 458 7987

**Lesly Rigaud**  
Client Technologies Officer  
[lrigaud@thegef.org](mailto:lrigaud@thegef.org)  
+1 202 473 3881

**Naiying Peng**  
Operations Analyst  
[npeng@thegef.org](mailto:npeng@thegef.org)  
+1 202 458 9580

**Olha Krushelnytska**  
Operations Officer  
[okrushelnytska@thegef.org](mailto:okrushelnytska@thegef.org)  
+1 202 458 5839

**Amanda Adams**  
Program Assistant  
[aadams@thegef.org](mailto:aadams@thegef.org)  
+1 202 473 9878

**Christine Roehrer**  
Coordinator –Lead Results Based Management  
[croehrer@worldbank.org](mailto:croehrer@worldbank.org)  
+1 202 473-0337

**Gabriella Richardson-Temm**  
Coordinator – Gender and Social Issues  
[grichardsontemm@thegef.org](mailto:grichardsontemm@thegef.org)

**Herbert Acquay**  
Manager - Policy, Partnerships and Operations  
[hacquay@worldbank.org](mailto:hacquay@worldbank.org)  
+1 202 473 1043

**Knut Roland Sundstrom**  
Coordinator - Policy and Strategy  
[ksundstrom@thegef.org](mailto:ksundstrom@thegef.org)  
+1 202 473 7510

**Minna Maria Kononen**  
Country Relations Officer  
[nkononen@thegef.org](mailto:nkononen@thegef.org)  
+1 202 473 9402

**Nicolas Alejandro Marquez Pizzanelli**  
Operations Analyst  
[nmarquez@thegef.org](mailto:nmarquez@thegef.org)  
+1 202 473 9522

**Olivier Besson**  
Program Assistant  
[obesson@thegef.org](mailto:obesson@thegef.org)  
+1 202 473-8935

**Omid Parhizkar**  
Operations Officer  
[oparhizkar@thegef.org](mailto:oparhizkar@thegef.org)  
+1 202 458 2186

**Pilar Barrera**  
Coordinator - Partnerships and  
Resource Mobilization  
[pbarrera@thegef.org](mailto:pbarrera@thegef.org)  
+1 202 458 9891

**Raul Rodriguez**  
Temporary  
[rrodriguez@thegef.org](mailto:rrodriguez@thegef.org)

**Regine Mpoyi**  
Program Assistant  
[rmpoyi@thegef.org](mailto:rmpoyi@thegef.org)  
+1 202 473 2754

**Seo-Jeong Yoon**  
Policy Officer  
[syoon@thegef.org](mailto:syoon@thegef.org)  
+1 202 473 7832

**Susan Waithaka**  
Country Relations Officer  
[swaithaka1@thegef.org](mailto:swaithaka1@thegef.org)  
+1 202 473 5457

**William Ehlers**  
Coordinator – Country Relations/  
Secretartary to the Concil  
[wehlers@thegef.org](mailto:wehlers@thegef.org)  
+1 202 458 9436

**Oreste Maia Andrade**  
Operations Analyst  
[omaiaandradejr@thegef.org](mailto:omaiaandradejr@thegef.org)  
+1 202 458 9387

**Quynh Xuan Thi Phan**  
Financial Officer  
[qphan1@worldbank.org](mailto:qphan1@worldbank.org)  
+1 202 458 4760

**Ramon Prudencio C de Mesa**  
Operations Officer  
[rmesa@thegef.org](mailto:rmesa@thegef.org)  
+1 202 458 9285

**Robert Schreiber**  
Program Coordinator  
[rschreiber@thegef.org](mailto:rschreiber@thegef.org)  
+1 202 458 0288

**Sonja Sabita Teelucksingh**  
Environmental Specialist  
[steelucksingh@thegef.org](mailto:steelucksingh@thegef.org)  
+1 202 458 4004

**Thomas Biegel**  
Consultant  
[tbiegel@thegef.org](mailto:tbiegel@thegef.org)  
+1 202 473 9252

**Yasemin Biro**  
Coordinator - Knowledge Management  
[ybiro@thegef.org](mailto:ybiro@thegef.org)  
+1 202 473 1550

---

## PROGRAMS

### **Gustavo Fonseca**

Director

[gfonseca@thegef.org](mailto:gfonseca@thegef.org)

+1 202 458 4818

#### **Anil Bruce Sookdeo**

Chemicals and Waste Focal Area Coordinator

[asookdeo@thegef.org](mailto:asookdeo@thegef.org)

+1 202 458 0683

#### **Astrid Hillers**

Senior Environmental Specialist

[ahillers@thegef.org](mailto:ahillers@thegef.org)

+1 202 458 8173

#### **Christian Severin**

International Waters Focal Area Coordinator

[cseverin@thegef.org](mailto:cseverin@thegef.org)

+1 202 458 2001

#### **Cyrille Barnerias**

Senior Environment Specialist

[cbarnerias@thegef.org](mailto:cbarnerias@thegef.org)

+1 202 473 8871

#### **Diana Movius**

Consultant

[dmovius@thegef.org](mailto:dmovius@thegef.org)

+1 202 473 4346

#### **Evelyn Swain**

Environment Specialist

[eswain@thegef.org](mailto:eswain@thegef.org)

+1 202 473 1151

#### **Flavius Mihaies**

Consultant, Climate and Chemicals

[fmihaies@thegef.org](mailto:fmihaies@thegef.org)

+1 202 560 4934

#### **Ibrahima Sow**

Africa Regional Coordinator

[isow@thegef.org](mailto:isow@thegef.org)

+1 202 473 2716

#### **Asha Imani Bobb Semple**

Operations Analyst

[abobbsemples@thegef.org](mailto:abobbsemples@thegef.org)

+1 202 473 989

#### **Chizuru Aoki**

Lead Environmental Specialist -

Multilateral Environmental Agreements

[caoki@thegef.org](mailto:caoki@thegef.org)

+1 202 473 6068

#### **Claude Gascon**

Lead Program Manager

[cgascon@thegef.org](mailto:cgascon@thegef.org)

+1 202 458 9755

#### **David Rodgers**

Climate Change Mitigation Focal Area  
Coordinator

[drodgers@thegef.org](mailto:drodgers@thegef.org)

+1 202 458 9869

#### **Dustin Schinn**

Operations Analyst

[dschinn@thegef.org](mailto:dschinn@thegef.org)

+1 202 458 1234

#### **Fareeha Iqbal**

Senior Climate Change Specialist

[fiqbal1@thegef.org](mailto:fiqbal1@thegef.org)

+1 202 458 9593

#### **Glynis Barber**

Program Assistant

[gbarber@thegef.org](mailto:gbarber@thegef.org)

+1 202 473 9647

#### **Jaime Cavelier**

Senior Biodiversity Specialist

[jcavelier@thegef.org](mailto:jcavelier@thegef.org)

+1 202 473 4886

**Jean-Marc Sinnassamy**  
Senior Environmental Specialist  
[jsinnassamy@thegef.org](mailto:jsinnassamy@thegef.org)  
+1 202 478 8060

**Kathryn Cherrie**  
Senior Program Assistant  
[kcherrie@thegef.org](mailto:kcherrie@thegef.org)  
+1 202 458 1460

**Kettly Denis**  
Program Assistant  
[kdenis@thegef.org](mailto:kdenis@thegef.org)  
+1 202 473 0825

**Leah Karrer**  
Senior Environmental Specialist  
[lkarrer@thegef.org](mailto:lkarrer@thegef.org)  
+1 202 473 8364

**Lulwa Ali**  
Senior Environmental Specialist  
[lali1@thegef.org](mailto:lali1@thegef.org)  
+1 202 473 5618

**Mark Zimsky**  
Latin America Regional Coordinator/ Biodiversity  
Focal Area Coordinator  
[mzimsky@thegef.org](mailto:mzimsky@thegef.org)  
+1 202 473 7855

**Masako Ogawa**  
Senior Environment Specialist  
[mogawa2@thegef.org](mailto:mogawa2@thegef.org)  
+1 202 458 2789

**Milena Gonzalez Vasquez**  
Junior Professional Associate  
[mgonzalezvasquez@thegef.org](mailto:mgonzalezvasquez@thegef.org)  
+1 202 458 1284

**Ming Yang**  
Senior Climate Change Specialist  
[myang@thegef.org](mailto:myang@thegef.org)  
+1 202 473 5707

**Mohamed Imam Bakarr**  
Lead Environmental Specialist - Program Strategy  
[mbakarr@thegef.org](mailto:mbakarr@thegef.org)  
+1 202 458 8890

**Monica Fernandes**  
Senior Program Assistant  
[mfernandes@thegef.org](mailto:mfernandes@thegef.org)  
+1 202 473 9647

**Nhu Quynh Phan**  
Program Assistant  
[nphan@thegef.org](mailto:nphan@thegef.org)  
+1 202 473 4236

**Nicole Glineur**  
Senior Environmental Specialist  
[nglineur@thegef.org](mailto:nglineur@thegef.org)  
+1 202 473 2512

**Pascal Martinez**  
Senior Climate Change Specialist  
[pmartinez2@thegef.org](mailto:pmartinez2@thegef.org)  
+1 202 458-9755

**Paul Hartman**  
Senior Environmental Specialist  
[phartman@thegef.org](mailto:phartman@thegef.org)

**Rawleston Moore**  
SIDS Regional Coordinator/ Climate Change  
Adaptation Focal Area Coordinator  
[rmoore1@thegef.org](mailto:rmoore1@thegef.org)  
+ 1 202 473 8231

**Saliha Dobardzic**  
Senior Climate Change Specialist  
[sdobardzic@thegef.org](mailto:sdobardzic@thegef.org)  
+1 202 473 5943

**Shakil Kayani**  
Program Assistant  
[skayani@thegef.org](mailto:skayani@thegef.org)  
+1 202 458 4680

**Sarah Wyatt**  
Operations Analyst  
[swyatt@thegef.org](mailto:swyatt@thegef.org)  
+1 202 473 0534

**Steffen Hansen**  
Junior Professional Officer  
[shansen@thegef.org](mailto:shansen@thegef.org)  
+1 202 458 8796

**Tigest Tirfe**  
Program Assistant  
[ttirfe@thegef.org](mailto:ttirfe@thegef.org)  
+1 202 458 9297

**Ulrich Apel**  
Europe and Central Asia Regional Coordinator/ Land  
Degradation Focal Area Coordinator  
[uapel@thegef.org](mailto:uapel@thegef.org)  
+1 202 473 2573

**Xiaomei Tan**  
Climate Change Specialist  
[xtan1@thegef.org](mailto:xtan1@thegef.org)  
+1 202 473 7448

**Yoko Watanabe**  
Asia Regional Coordinator  
[ywatane@thegef.org](mailto:ywatanabe@thegef.org)  
+1 202 473 9847

---

# INDEPENDENT EVALUATION OFFICE

## Juha Uitto

Director

GEF Independent Evaluation Office

[juitto@thegef.org](mailto:juitto@thegef.org)

**Anupam Anand**  
Evaluations Officer  
[aanand2@thegef.org](mailto:aanand2@thegef.org)

**Carlo Carugi**  
Senior Evaluations Officer  
[ccarugi@thegef.org](mailto:ccarugi@thegef.org)  
+1 202 473 8154

**Anna Viggh**  
Senior Evaluations Officer  
[aviggh@worldbank.org](mailto:aviggh@worldbank.org)  
+1 202 4738896

**Kseniya Temnenko**  
Knowledge Management Officer  
[ktemnenko@thegef.org](mailto:ktemnenko@thegef.org)  
+1 202 458 4908

**Jeneen Garcia**  
Evaluation Officer  
[jgarcia2@thegef.org](mailto:jgarcia2@thegef.org)  
+1 202 458 2719

**Francisco Grahammer**  
Information Analyst  
[fgrahammer@thegef.org](mailto:fgrahammer@thegef.org)  
+1 202 473 4914

**Ruben Sardon Martin**  
Consultant  
[rsardon@thegef.org](mailto:rsardon@thegef.org)  
+1 202 473 1703

**Kyoko Matsumoto**  
Senior Evaluation Officer  
[kmatsumoto@thegef.org](mailto:kmatsumoto@thegef.org)  
+1 202 473 2609

**Marie-Constance Manuella Koukoui**  
Senior Executive Assistant  
[mkoukoui@thegef.org](mailto:mkoukoui@thegef.org)  
+1 202 458 9682

**Khondoker Tanveer Haider**  
Consultant  
[khaider@thegef.org](mailto:khaider@thegef.org)

**Neeraj Kumar Negi**  
Senior Evaluations Officer  
[nnegi1@thegef.org](mailto:nnegi1@thegef.org)  
+1 202 473 2259

**Juan Portillo**  
Senior Operations Officer  
[jportillo@worldbank.org](mailto:jportillo@worldbank.org)  
+1 202 473 6056

**Baljit Wadhwa**  
Senior Evaluations Officer  
[bwadhwa@worldbank.org](mailto:bwadhwa@worldbank.org)  
+1 202 473 0266

**Dennis Bours**  
Evaluation Officer  
[sdbours@thegef.org](mailto:sdbours@thegef.org)  
+1 202 458 9153

**Malac Kabir**  
Research Assistant  
[mkabir4@thegef.org](mailto:mkabir4@thegef.org)  
+1 202 473 1808

**Molly Watts**  
Evaluation Analyst  
[mwatts1@thegef.org](mailto:mwatts1@thegef.org)  
+1 202 473 3675

**Sara El Choufi**  
Evaluation Analyst  
[selchoufi@thegef.org](mailto:selchoufi@thegef.org)  
+1 202 458 7069

**Peixuan Zhou**  
Evaluation Analyst  
[pzhou2@thegef.org](mailto:pzhou2@thegef.org)  
+1 202 473 1703

**Evelyn Chihuguyu**  
Program Assistant  
[echihuguyu@thegef.org](mailto:echihuguyu@thegef.org)  
+1 202 473 0654

**Laura Reynolds Nissley**  
Consultant  
[lnissley@thegef.org](mailto:lnissley@thegef.org)

## ADAPTATION FUND BOARD SECRETARIAT

**Mikko Antti Ollikainen**  
Senior Environmental Specialist  
[mollikainen@adaptation-fund.org](mailto:mollikainen@adaptation-fund.org)  
+1 202 458 8912

**Silvia Mancini**  
Operations Officer  
[smancini@adaptation-fund.org](mailto:smancini@adaptation-fund.org)

**Aya Mimura**  
Operations Associate  
[amimura@adaptation-fund.org](mailto:amimura@adaptation-fund.org)  
+1 202 458 7347

**Sophie Hans-Moevi**  
Senior Program Assistant  
[shansmoevi@adaptation-fund.org](mailto:shansmoevi@adaptation-fund.org)  
+1 202 473 0701

**Matthew Pueschel**  
Consultant  
[mpueschel@adaptation-fund.org](mailto:mpueschel@adaptation-fund.org)  
+1 202 473 6743

**Anni Rein**  
Temporary  
[arein@adaptation-fund.org](mailto:arein@adaptation-fund.org)  
+1 202 458 9758

**Daouda Ben Oumar Ndiaye**  
Adaptation Officer  
[dndiaye@adaptation-fund.org](mailto:dndiaye@adaptation-fund.org)  
+1 202 473 4611

**Young Hee Lee**  
Operations Analyst  
[ylee12@adaptation-fund.org](mailto:ylee12@adaptation-fund.org)  
+1 202 473 8219

**Farayi Onias Madziwa**  
Program Officer  
[fmadziwa@adaptation-fund.org](mailto:fmadziwa@adaptation-fund.org)  
+1 202 458 5184

**Hugo Remaury**  
Junior Professional Associate  
[hremaury@adaptation-fund.org](mailto:hremaury@adaptation-fund.org)  
+1 202 473 5463

**Alicia Marie Austin**  
Temporary  
[aaustin@adaptation-fund.org](mailto:aaustin@adaptation-fund.org)  
+1 202 458 9758

# GEF DIRECTORY OF ADDRESSEES

## GEF Secretariat

**GEF Secretariat<sup>1</sup>**  
**Program Coordination Registry**  
1818 H Street, NW  
Washington, D.C. 20433, USA  
[gcoordination@thegef.org](mailto:gcoordination@thegef.org)

Attn: Mr. Henry Salazar  
Coordinator - Operations  
[hsalazar@thegef.org](mailto:hsalazar@thegef.org)  
+1 202 473 8226

## GEF Trustee

**International Bank for Reconstruction and Development (The World Bank) Registry**  
1818 H Street, NW  
Washington, D.C. 20433, USA  
[geftrustee@worldbank.org](mailto:geftrustee@worldbank.org)

Mr. Praveen Desabatla  
Team Leader, DFPTF  
[pdesabatla@worldbank.org](mailto:pdesabatla@worldbank.org)  
+1 202 458 2099

## Convention Secretariats

**UN Convention on Biological Diversity (CBD)**  
413 rue Saint-Jacques, Suite 800  
Montreal, Quebec, Canada H2Y 1 N9  
[Secretariat@cbd.int](mailto:Secretariat@cbd.int)

Attn: Mr. Braulio F. de Souza Dias  
Executive Secretary  
*GEF Contact Person: Mr. Yibin Xiang*  
*Program Officer*  
[Yibin.xiang@cbd.int](mailto:Yibin.xiang@cbd.int)  
+1 514 288 2220

**UN Framework on Climate Change Convention (UNFCCC)**  
Haus Carstanjen  
Martin Luther King Strasse 8  
53175 Bonn, Germany  
[secretariat@unfccc.int](mailto:secretariat@unfccc.int)

Attn: Ms. Patricia Espinosa  
Executive Secretary  
*GEF Contact Person(s):*  
- *Ms. Deschen Tsering*  
[DTsering@unfccc.int](mailto:DTsering@unfccc.int)  
  
- *Mr. Alejandro Kilpatrick*  
[AKilpatrick@unfccc.int](mailto:AKilpatrick@unfccc.int)  
  
[gefenabling.activities@unfccc.int](mailto:gefenabling.activities@unfccc.int)  
[gefprojects@unfccc.int](mailto:gefprojects@unfccc.int)

**Secretariat of the Basel, Rotterdam and Stockholm Conventions**  
UNEP International Environment House 1  
11-13 Chemin des Anemones  
1219 Chatelaine, Geneva, Switzerland

Attn: Dr. Rolph Payet  
Executive Secretary  
*Mr. Frank Moser*  
*GEF Focal Point*  
*Office of the Executive Secretary*  
[frank.moser@brsmeas.org](mailto:frank.moser@brsmeas.org)  
+41 22 917 8951

---

<sup>1</sup> GEF Secretariat's physical address: 1899 Pennsylvania Avenue, NW, Washington, D.C. 20006

---

**UN Convention to Combat Desertification  
(UNCCD)**

Herrmann-Ehlers Str. 10  
D-53113 Bonn, Germany  
[secretariat@unccd.int](mailto:secretariat@unccd.int)

Attn: Ms. Monique Barbut  
Executive Secretary

*GEF Contact Person: Ms. Anja Thust  
Program Officer, FCMI Unit*

[athust@unccd.int](mailto:athust@unccd.int)  
+49 228 815 2828

---

**Interim Secretariat of the Minamata Convention**

International Environment House 1  
13, chemin des Anémones  
CH-1219 Chatelaine, Geneva  
Switzerland

Mr. Jacob Duer  
Coordinator, Minamata Convention  
[jacob.duer@unep.org](mailto:jacob.duer@unep.org)  
+41 22 917 82 17

---

## STAP Panel and Secretariat

### Panel

**Rosina Bierbaum**

Chairperson

[rbierbau@umich.edu](mailto:rbierbau@umich.edu)

+1 734 763 8675

**Ralph E. Sims**

Panel Member on Climate Change Mitigation

[R.E.Sims@massey.ac.nz](mailto:R.E.Sims@massey.ac.nz)

+64 21 166 4555

**Brian Child**

Panel Member on Biodiversity

[bchild@ufl.edu](mailto:bchild@ufl.edu)

+352 392 0494

**Ricardo Barra**

Panel Member on Chemicals & Waste

[ricbarra@udec.cl](mailto:ricbarra@udec.cl)

56-41-2204002

**Annette Cowie**

Panel Member on Land Degradation

[annette.cowie@une.edu.au](mailto:annette.cowie@une.edu.au)

+61 2 677 28080

**Jakob Granit**

Panel Member on International Waters

[jakob.granit@sei-international.org](mailto:jakob.granit@sei-international.org)

+46 73 707 8536

**Anand Patwardhan**

Panel Member on Adaptation

[apat@umd.edu](mailto:apat@umd.edu)

+1 301 405 3413

**Michael Stocking**

Advisor to the STAP Chair

[m.stocking@uea.ac.uk](mailto:m.stocking@uea.ac.uk)

+44 1603 592 339

**Thomas E. Lovejoy**

Advisor to the STAP Chair

[tlovejoy@unfoundation.org](mailto:tlovejoy@unfoundation.org)

### Secretariat

**Thomas Hammond**

STAP Secretary

[thomas.hammond@unep.org](mailto:thomas.hammond@unep.org)

+1 202 974 1318

**Guadalupe Duron**

Programme Officer

[guadalupe.duron@unep.org](mailto:guadalupe.duron@unep.org)

+1 202 974 1313

**Robin Burgess**

Programme Assistant

[robin.burgess@unep.org](mailto:robin.burgess@unep.org)

+1 202 974 1311

**Christine Wellington-Moore**

Senior Programme Officer

[christine.wellington-moore@unep.org](mailto:christine.wellington-moore@unep.org)

+1 202 974 1303

**Lev Neretin**

Senior Programme Officer

[lev.neretin@unep.org](mailto:lev.neretin@unep.org)

+1 202 621 5020

**Sarah Lebel**

Climate Adaptation and Resilience Specialist

[sarah.lebel@unep.org](mailto:sarah.lebel@unep.org)

+1 202 621 5036

**Virginia Gorsevski**

Consultant

[virginia.gorsevski@unep.org](mailto:virginia.gorsevski@unep.org)

+1 202 621 5039

## GEF Agency Secretariats

**African Development Bank (AfDB) Registry**  
Headquarters  
01 BP 1387 Abidjan 01  
Côte d'Ivoire  
[Gef\\_afdb@afdb.org](mailto:Gef_afdb@afdb.org)

Mr. Mahamat Assouyouli  
GEF Coordinator  
[m.assouyouli@afdb.org](mailto:m.assouyouli@afdb.org)

*Copy to:*  
*Mr. Kurt Lonsway*  
*Division Manager, Environment and Climate Change*  
[k.lonsway@afdb.org](mailto:k.lonsway@afdb.org)

**Asian Development Bank (ADB) Registry**  
6 ADB Avenue  
Mandaluyong City 1550  
Metro Manila, Philippines  
[adbgef@adb.org](mailto:adbgef@adb.org)

Attn: Mr. Nessim Ahmad  
Deputy Director General, Sustainable Development and Climate Change Development and GEF Official Focal Point  
[njahmad@adb.org](mailto:njahmad@adb.org)

*Copy to:*  
*Mr. Bruce Dunn*  
*Principal Environment Specialist, Environment and Safeguards and ADB/GEF Coordinator*  
[bdunn@adb.org](mailto:bdunn@adb.org)  
+632 683 1922/ +632 683 1923

**European Bank for Reconstruction and Development (EBRD) Registry**  
One Exchange Square  
London EC2A 2JN, United Kingdom  
[ebrdgef@ebrd.com](mailto:ebrdgef@ebrd.com)

Attn: Ms. Marta Simonetti  
Senior Manager  
(Multilateral Funds – Climate and Environment)  
EBRD GEF Executive Coordinator  
Donor Co-Financing – VP Policy  
[simonetm@ebrd.com](mailto:simonetm@ebrd.com)  
+ 0044 (0) 207338 7259  
+ 0044 (0) 7921 039815

**United Nations Food and Agriculture Organization (FAO) Registry**  
Viale Dell Terme di Caracalla  
00153 Rome, Italy  
[GEF-Coordination-Unit@fao.org](mailto:GEF-Coordination-Unit@fao.org)

Attn: Mr. Gustavo Merino  
Director, Investment Centre Division  
[TCI-Director@fao.org](mailto:TCI-Director@fao.org)  
[faogef@fao.org](mailto:faogef@fao.org)  
+3906 570 54477

*Copy to:*

*Mr. Jeffrey Griffin*  
*Senior Coordinator - GEF*  
*Investment Center Division*  
[Jeffrey.Griffin@fao.org](mailto:Jeffrey.Griffin@fao.org)  
+3906 570 55680

## GEF Agency Secretariats cont'd

### **Inter-American Development Bank (IDB) Registry**

1300 New York Avenue, NW  
Washington, D.C. 20577, USA  
[idb-gef@iadb.org](mailto:idb-gef@iadb.org)

Mr. Michael Collins  
GEF Coordinator  
[michaelc@iadb.org](mailto:michaelc@iadb.org)  
+ 1 202 623 2158

### **International Bank for Reconstruction and Development (The World Bank) Registry**

1818 H Street, NW Washington,  
D.C. 20433, USA  
[wbgefoperations@worldbank.org](mailto:wbgefoperations@worldbank.org)

Ms. Karin Shepardson  
GEF Executive Coordinator  
[kshepardson@worldbank.org](mailto:kshepardson@worldbank.org)  
+ 1 202 458 1398

*Copy to:*  
*Dominique Isabelle Kayser*  
[dkayser@worldbank.org](mailto:dkayser@worldbank.org)

### **International Fund for Agricultural Development (IFAD) Registry**

Via Paolo di Dono, 44  
00142 Rome, Italy  
[ECDmailbox@ifad.org](mailto:ECDmailbox@ifad.org)

Mr. Perin Saint-Ange  
Associate Vice President,  
Programme Management Department  
[p.saintange@ifad.org](mailto:p.saintange@ifad.org)  
+39 06 5459 2448

*Copy to:*  
*Ms. Margarita Astrálaga*  
*Director, Environment and Climate Division*  
[m.astralaga@ifad.org](mailto:m.astralaga@ifad.org)  
*Tel: +39 06 5459 2151*

*Ms. Sheila Mwanundu*  
*GEF Coordinator*  
[s.mwanundu@ifad.org](mailto:s.mwanundu@ifad.org)  
*Tel: +39 06 5459 2031*

*Ms. Aisha Nazario*  
[a.nazario@ifad.org](mailto:a.nazario@ifad.org)  
*Tel: +39 06 5459 2459*

*Ms. Estibalitz Morras*  
[e.morras@ifad.org](mailto:e.morras@ifad.org)  
*Tel: +39 06 5459 2438*

### **United Nations Environment Programme (UNEP) Registry**

United Nations Avenue  
Gigiri, PO Box 30552  
00100 Nairobi, Kenya  
[Unepgef@unep.org](mailto:Unepgef@unep.org)

Local Office:  
900 17th Street, NW  
Suite 506, Washington, D.C. 20006

Ms. Brennan VanDyke  
GEF Executive Coordinator  
Deputy Director, Office for Operations  
[brennan.vandyke@unep.org](mailto:brennan.vandyke@unep.org)  
Tel: (917) 367-2114

*Copy to:*  
*Ms. Kelly West*  
*Senior GEF Portfolio Manager*  
*Office for Operations*  
[Kelly.West@unep.org](mailto:Kelly.West@unep.org)

## GEF Agency Secretariats cont'd

**United Nations Industrial Development Organization (UNIDO) Registry**  
Vienna International Centre  
PO Box 300  
A-1400 Vienna, Austria  
[gef@unido.org](mailto:gef@unido.org)

Mr. Juergen Hierold  
GEF Coordinator  
[J.Hierold@unido.org](mailto:J.Hierold@unido.org)  
+43 1 26026 4565

*Copy to:*  
*Ms. Pamela Mikschofsky*  
[p.mikschofsky@unido.org](mailto:p.mikschofsky@unido.org)

**United Nations Development Programme (UNDP) Registry**  
304 East 45th Street  
New York, NY 10017, USA  
[undpgef@undp.org](mailto:undpgef@undp.org)

Attn: Ms. Adriana Dinu  
GEF Executive Coordinator  
[Adriana.dinu@undp.org](mailto:Adriana.dinu@undp.org)  
+1 212 906 5143

## GEF Project Agency Secretariats

**Corporación Andina de Fomento (CAF)**  
380 Enrique Canaval Moreyra Ave., 13th Floor,  
San Isidro, Lima  
Lima 27, Peru  
[CAFGEF@caf.com](mailto:CAFGEF@caf.com)

Attn: René Gómez García Palao  
Senior Executive  
[rgomezgarcia@caf.com](mailto:rgomezgarcia@caf.com)  
+511-710-8530

*Copy to:*  
*Ms. Ligia Castro de Doens,*  
*Director*  
*Environment*  
[lcastro@caf.org](mailto:lcastro@caf.org)

**Conservation International (CI)**  
2011 Crystal Drive, Suite 500  
Arlington VA, 22202  
USA  
[CIGEF@conservation.org](mailto:CIGEF@conservation.org)

Attn: Mr. Miguel Morales  
Vice President/ Managing Director  
CI-GEF Project Agency  
[mamorales@conservation.org](mailto:mamorales@conservation.org)

*Copy to:*  
[osamaroo@conservation.org](mailto:osamaroo@conservation.org)

## GEF Project Agency Secretariats cont'd

**Development Bank of Southern Africa  
(DBSA)**

1258 Lever Road, Headway Hill  
Midrand, 1685  
South Africa  
[DBSAGEF@dbsa.org](mailto:DBSAGEF@dbsa.org)

Attn: Ms. Nomsa T. Zondi  
GEF Coordinator  
[nomsaz@dbsa.org](mailto:nomsaz@dbsa.org)  
+27 11 313 3491

**Foreign Economic Cooperation Office  
(FECO)**

Ministry of Environmental Protection  
ECO Building  
No.5 Houyingfang Hutong  
Xicheng District, Beijing 100035, China  
[FECOGEF@mepfeco.org.cn](mailto:FECOGEF@mepfeco.org.cn)

Attn: Mr. Xiao Xuezhi  
Deputy Director General  
[xiao.xuezhi@mepfeco.org.cn](mailto:xiao.xuezhi@mepfeco.org.cn)  
+ 86-10-82268807

*Copy to:*  
*Ms. Chen Haijun*  
*Director,*  
[chen.haijun@mepfeco.org.cn](mailto:chen.haijun@mepfeco.org.cn)  
+ 86-10-82268846

Ms. Yan Wei  
Senior Project Manager  
[yan.wei@mepfeco.org.cn](mailto:yan.wei@mepfeco.org.cn)  
+ 86-10-82268848

**International Union for Conservation of  
Nature (IUCN)**

Rue Mauverney, 28  
CH-1196 Gland,  
Switzerland  
[IUCNCEF@iucn.org](mailto:IUCNCEF@iucn.org)

Attn: Cyrie Sendashonga  
Global Director, Policy and Programme  
[Cyriaque.Sendashonga@iucn.org](mailto:Cyriaque.Sendashonga@iucn.org)  
+41 22 999 03 17

*Copy to:*  
*Mr. Jean-Yves Pirot,*  
*Head, GEF Coordination Unit*  
[jean-yves.pirot@iucn.org](mailto:jean-yves.pirot@iucn.org)  
+41 22 999 02 56

*Mr. Sébastien Delahaye*  
*Portfolio Manager*  
*GEF Coordination Unit*  
[Sebastien.Delahaye@iucn.org](mailto:Sebastien.Delahaye@iucn.org)  
+41 22 999 02 51

## GEF Project Agency Secretariats cont'd

---

**World Wildlife Fund, Inc. (WWF-US)**  
1250 24th St, NW  
Washington, DC 20037-1193  
[WWFGEF@wwfus.org](mailto:WWFGEF@wwfus.org)

Attn: Dr. David S. McCauley  
Senior Vice President  
Policy and Government Affairs  
[david.mccauley@wwfus.org](mailto:david.mccauley@wwfus.org)  
+1-202-495-4159

*Copy to:*  
*Mr. Hervé Lefevre*  
*Senior Director, GEF Relations and*  
*GEF Coordinator*  
[Herve.Lefevre@wwfus.org](mailto:Herve.Lefevre@wwfus.org)  
+1-202-459-8533

**Fundo Brasileiro para a Biodiversidade (FUNBIO)**  
Rua Voluntários da Pátria, 286 5º andar  
Botafogo, Rio de Janeiro, RJ  
22270-014  
[funbiogef@funbio.org.br](mailto:funbiogef@funbio.org.br)

Attn: Fabio Heuseler Ferreira leite  
GEF Coordinator  
[fabio.leite@funbio.org.br](mailto:fabio.leite@funbio.org.br)  
+ 55 21 2123-5326

*Copy to:*  
[agenciageg@funbio.org.br](mailto:agenciageg@funbio.org.br)

**Banque Ouest Africaine de Développement (BOAD)**  
68 Avenue de La Liberation  
1172 - Lomé / Togo

Attn: Almamy Mbengue  
Director of Environment and  
Finance Climate,  
GEF Coordonator and Focal  
Point [ambengue@boad.org](mailto:ambengue@boad.org)  
+(228)22.232.525.24

*Copy to:*  
*Ibrahim Traore*  
*Principal Economist of environment,*  
*GEF Alternate Focal Point*  
[itraore@boad.org](mailto:itraore@boad.org)  
+1(228)22.23.26.92

*Copy to:*  
*Ms. Sangare-Toure Fatoumata*  
[ftoure@boad.org](mailto:ftoure@boad.org)

---

**DISTRIBUTION LIST WHEN SUBMITTING PROJECT PROPOSALS  
FOR GEF CEO APPROVAL/ENDORSEMENT**

As a rule, all GEF Agencies are expected to circulate their project proposals to the GEF Secretariat, GEF Agencies, and STAP and to the relevant Convention Secretariat.

**Standard Distribution List for all projects (PIF, PPG, FSP, MSP, and EA):**

gcoordination@thegef.org  
STAP.Secretariat@unep.org  
thomas.hammond@unep.org  
adbgef@adb.org  
bdunn@adb.org  
njahmad@adb.org  
gef\_afdb@afdb.org  
m.assouyouti@afdb.org  
k.lonsway@afdb.org  
ambengue@boad.org  
dtoe@boad.org  
itraore@boad.org  
straore@boad.org  
ytoure@boad.org  
CAFGEF@caf.com  
rgomezgarcia@caf.com  
lcastro@caf.org  
CIGEF@conservation.org  
lspijkerman@conservation.org  
osamaroo@conservation.org  
DBSAGEF@dbsa.org  
nomsaz@dbsa.org  
ebrdgef@ebrd.com  
simonetm@ebrd.com  
GEF-Coordination-Unit@fao.org  
faogef@fao.org  
TCI-Director@fao.org  
Jeffrey.Griffin@fao.org  
FECOGEF@mepfeco.org.cn  
xiao.xuezhi@mepfeco.org.cn  
chen.haijun@mepfeco.org.cn  
yan.wei@mepfeco.org.cn  
FUNBIOGEF@funbio.org.br  
agenciagef@funbio.org.br  
fabio.leite@funbio.org.br  
idb-gef@iadb.org  
michaelc@iadb.org  
ECDmailbox@ifad.org  
p.saintange@ifad.org  
m.astralaga@ifad.org  
s.mwanundu@ifad.org  
a.nazario@ifad.org  
IUCNGEF@iucn.org  
Cyriaque.Sendashonga@iucn.org  
Sebastien.Delahaye@iucn.org  
jean-yves.piro@iucn.org  
unepgef@unep.org  
brennan.vandyke@unep.org  
Kelly.West@unep.org  
gef@unido.org  
j.hierold@unido.org  
p.mikschofsky@unido.org  
undpgef@undp.org  
adriana.dinu@undp.org  
wbgefoperations@worldbank.org  
WWFGEF@wwfus.org  
David.McCauley@wwfus.org  
Herve.Lefevre@wwfus.org

**To be included in the Standard Distribution List as appropriate:**

*For Biodiversity Projects:*

secretariat@cbd.int  
yibin.xiang@cbd.int

*For Climate Change Projects:*

gefprojects@unfccc.int  
gefenabling.activities@unfccc.int

*For Land Degradation Projects:*

secretariat@unccd.int  
athust@unccd.int

*For Mercury Projects*

jacob.duer@unep.org  
shelia.logan@unep.org

*For POPs Projects:*

ta@brsmeas.org  
maria.cardenas@brsmeas.org  
frank.moser@brsmeas.org