



# PROGRAM MANAGEMENT

**July 31<sup>st</sup>, 2017 - August 4<sup>th</sup> 2017**

A weekly update on the GEF Program Management

## Calendar

- Council Meeting Schedules
- GEFOP Meeting Schedules

## Projects

- GEF Project Concepts, Proposals, Draft Documents Received
- Project Clearances, Approvals, Endorsements and Other Comments

## Contacts

- GEF Secretariat Staff
- GEF Agencies
- GEF Trustee Convention Secretariats

## Communications

- Introducing new staff to the GEFSEC
- Announcements

## SCHEDULE OF FORTHCOMING GEF COUNCIL MEETING

Meetings/Consultations	November 2017
GEF Council Consultations with Civil Society	November 27
GEF Council Meeting	November 28-30
LDCF/SCCF Council Meeting	November 30
STAP Panel Meetings	

## GEF Work Program Calendar for 2017

Events	May CWP
Receipt deadline for PIF/PFD	September 1
Draft Cover Note to Agencies, ConvSec, STAP	October 20
Inter-Agency Meeting with ConvSec, STAP	October 25
Posting of Work Program	October 31
Council Meeting	November 28-30
Council Approval	November 30

**Fiscal Year '17**

**Country Support Program Activities**

**Expanded Constituency Workshops**

**Constituency Meetings**

## Requests Received from GEF Agencies

July 31 - August 4, 2017

GEF ID	IA ID	Type	Focal Area	Decision Sought	Proponent	Country	Project Title	Program Manager	Date Received
<b>FAO</b>									
9864		FP	Climate Change	CEO PIF Clearance for WPI	FAO	Global	Global capacity-building products towards enhanced transparency in the AFOLU sector (CBIT-AFOLU)	Milena Vasquez	3-Aug-17
<b>IADB</b>									
4859		FP	Multi Focal Area	CEO endorsement of FSP	IADB	Brazil	Conservation, Restoration and Sustainable Management Strategies to enhance Caatinga, Pampa and Pantanal Biodiversity – GEF Terrestre	Mark Zimsky	4-Aug-17
<b>IUCN</b>									
9847		FP	Biodiversity	CEO PIF Clearance for WPI	IUCN	Vanuatu	Expanding Conservation Areas Reach and Effectiveness (ECARE) in Vanuatu	Cyrille Barnerias	2-Aug-17
9846		FP	Multi Focal Area	CEO PIF Clearance for WPI	IUCN	Solomon Islands	EREPA - Ensuring resilient ecosystems and representative protected areas in the Solomon	Sarah Wyatt	2-Aug-17

GEF ID	IA ID	Type	Focal Area	Decision Sought	Proponent	Country	Project Title	Program Manager	Date Received
<b>UNDP</b>									
9877	6136	EA	Climate Change	CEO EA Approval	UNDP	Bosnia-Herzegovina	Fourth National Communication and Third Biennial Update Report under the UNFCCC	Ming Yang	1-Aug-17
9878	6163	FP	Climate Change	CEO PIF Clearance for WPI	UNDP	Algeria	National Pilot Project on integrated management of household and similar waste with low greenhouse gas emissions – Municipality of Constantine, Algeria	Ming Yang	3-Aug-17
9879	6138	MSP	Biodiversity	CEO PIF Approval	UNDP	Georgia	Enhancing financial sustainability of the Protected Area system in Georgia	Jaime Cavelier	4-Aug-17
<b>UNEP</b>									
9802		FP	Biodiversity	CEO PIF Clearance for WPI	UNEP	Congo DR	Promoting the effective management of Salonga National Park through creation of community forests and improving the well-being of local communities	Jaime Cavelier	2-Aug-17
9866		MSP	Biodiversity	CEO MSP Approval	UNEP	Global	Support to Preparation of the Interim National Report on the Implementation of the Nagoya Protocol	Jaime Cavelier	3-Aug-17

GEF ID	IA ID	Type	Focal Area	Decision Sought	Proponent	Country	Project Title	Program Manager	Date Received
<u>UNIDO</u>									
9811		MSP	Climate Change	CEO PIF Approval	UNIDO	Ukraine	The Global Cleantech Innovation Programme for SMEs	Olha Krushelnytska	25-Jul-17
9811		MSP	Climate Change	CEO PPG approval	UNIDO	Ukraine	The Global Cleantech Innovation Programme for SMEs	Olha Krushelnytska	25-Jul-17

## Responses to Proponents

July 31 - August 4, 2017

ID	IA ID	Type	Focal Area	Decision Sought	Proponen	Country	Project Title	Program Manage	Response Date	Remarks
<b>FAO</b>										
9876		FP	Biodiversity	CEO PPG approval	FAO	China	On-farm Conservation and Sustainable Use of Genetic Diversity of Crops Originated in China	Ulrich Apel	2-Aug-17	PPG approved by CEO
<b>UNDP</b>										
9151	5646	FP	Climate Change	CEO endorsement of FSP	UNDP	Bosnia-Herzegovina	Catalyzing Environmental Finance for Low-Carbon Urban Development	Ming Yang	31-Jul-17	FSP recommended for endorsement (Docs circulating for clearance/signature)
9210	5574	FP	Climate Change	CEO endorsement of FSP	UNDP	Uganda	NAMA on Integrated Waste Management and Biogas in Uganda	Ming Yang	31-Jul-17	FSP recommended for endorsement (Technically cleared)
9480	5802	MSP	Climate Change	CEO MSP Approval	UNDP	Uruguay	Towards a Sustainable and Efficient Urban Mobility System in Uruguay	Milena Vasquez	31-Jul-17	MSP sent to Agency for revision
9873	5822	FP	Biodiversity	CEO PPG approval	UNDP	China	Conservation and sustainable use of indigenous agricultural genetic diversity in Hubei	Ulrich Apel	31-Jul-17	PPG approved by CEO
9875	5823	FP	Biodiversity	CEO PPG approval	UNDP	China	Participatory in situ Conservation and Sustainable Use of Agrobiodiversity in Hainan	Ulrich Apel	31-Jul-17	PPG approved by CEO
9279	5452	FP	Climate Change	CEO PIF Clearance for WPI	UNDP	Turkmenistan	Sustainable Cities: Integrated Green Urban Development in Ashgabat and Awaza	Ming Yang	31-Jul-17	Review Sheet sent to Agency for PIF revision

<b>ID</b>	<b>IA ID</b>	<b>Type</b>	<b>Focal Area</b>	<b>Decision Sought</b>	<b>Proponen</b>	<b>Country</b>	<b>Project Title</b>	<b>Program Manage</b>	<b>Response Date</b>	<b>Remarks</b>
9675	151	MSP	Climate Change	CEO MSP Approval	UNEP, UNDP	Global	CBIT Global Coordination Platform	Dustin Schinn	1-Aug-17	MSP recommended for CEO approval (P.M. recommended for CEO approval)
9151	564	FP	Climate Change	CEO endorsement of FSP	UNDP	Bosnia-Herzegovina	Catalyzing Environmental Finance for Low-Carbon Urban Development	Ming Yang	2-Aug-17	FSP endorsed by CEO
9874	582	FP	Biodiversity	CEO PPG approval	UNDP	China	Strengthening coordinated approaches to reduce invasive alien species (IAS) threats to globally significant agrobiodiversity and agroecosystems in China (R-IAST)	Ulrich Apel	2-Aug-17	PPG approved by CEO
9210	557	FP	Climate Change	CEO endorsement of FSP	UNDP	Uganda	NAMA on Integrated Waste Management and Biogas in Uganda	Ming Yang	2-Aug-17	FSP endorsed by CEO
9843	600	FP	Climate Change	CEO PIF Clearance for WPI	UNDP	South Sudan	Strengthening Climate Information and Early Warning Systems in South Sudan	Dustin Schinn	3-Aug-17	PIF recommended for CEO clearance (P.M. recommended to be cued in the LDCF pipeline (8/3/2017))
9675	151	MSP	Climate Change	CEO MSP Approval	UNEP, UNDP	Global	CBIT Global Coordination Platform	Dustin Schinn	3-Aug-17	MSP approved by CEO

## UNEP

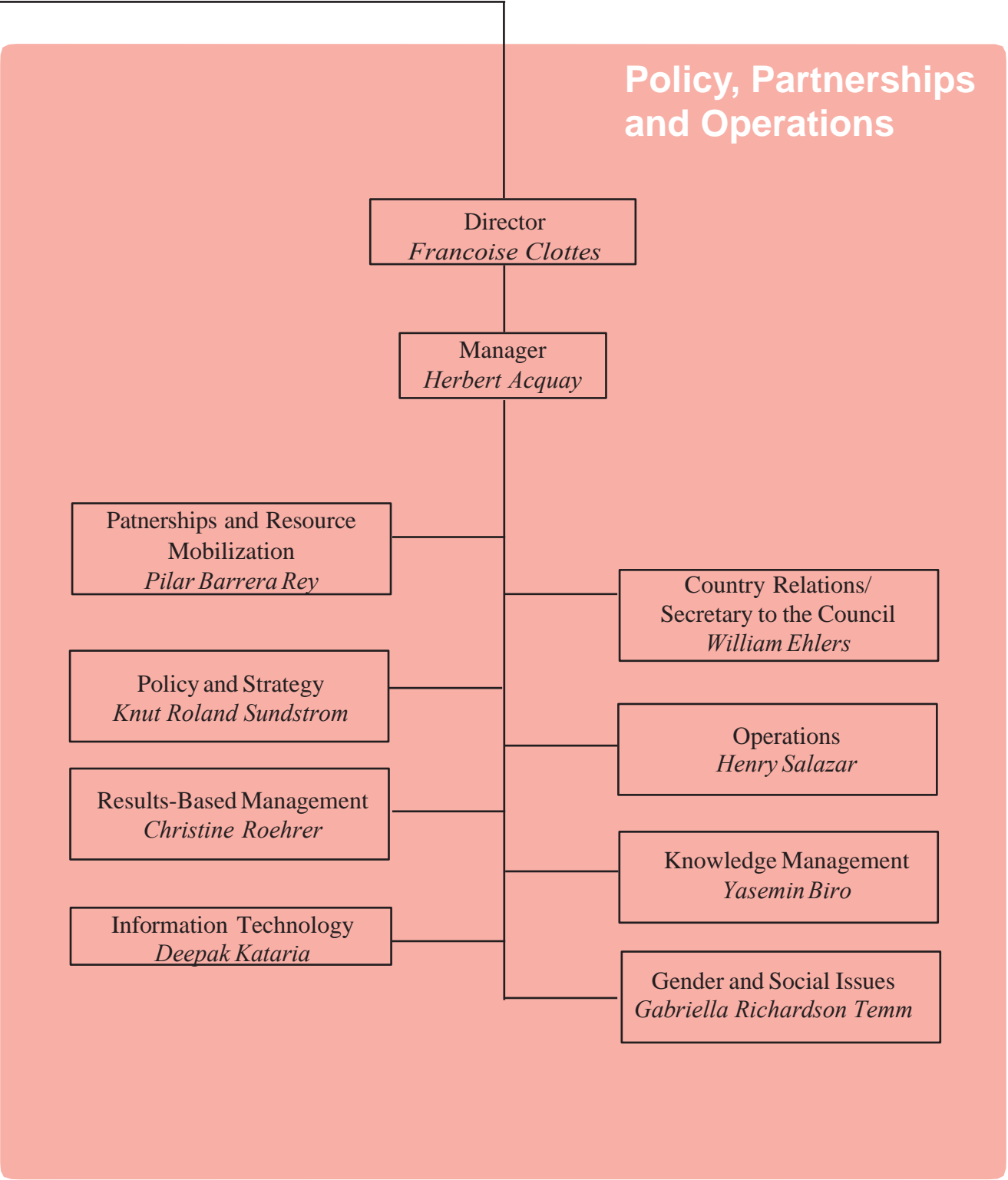
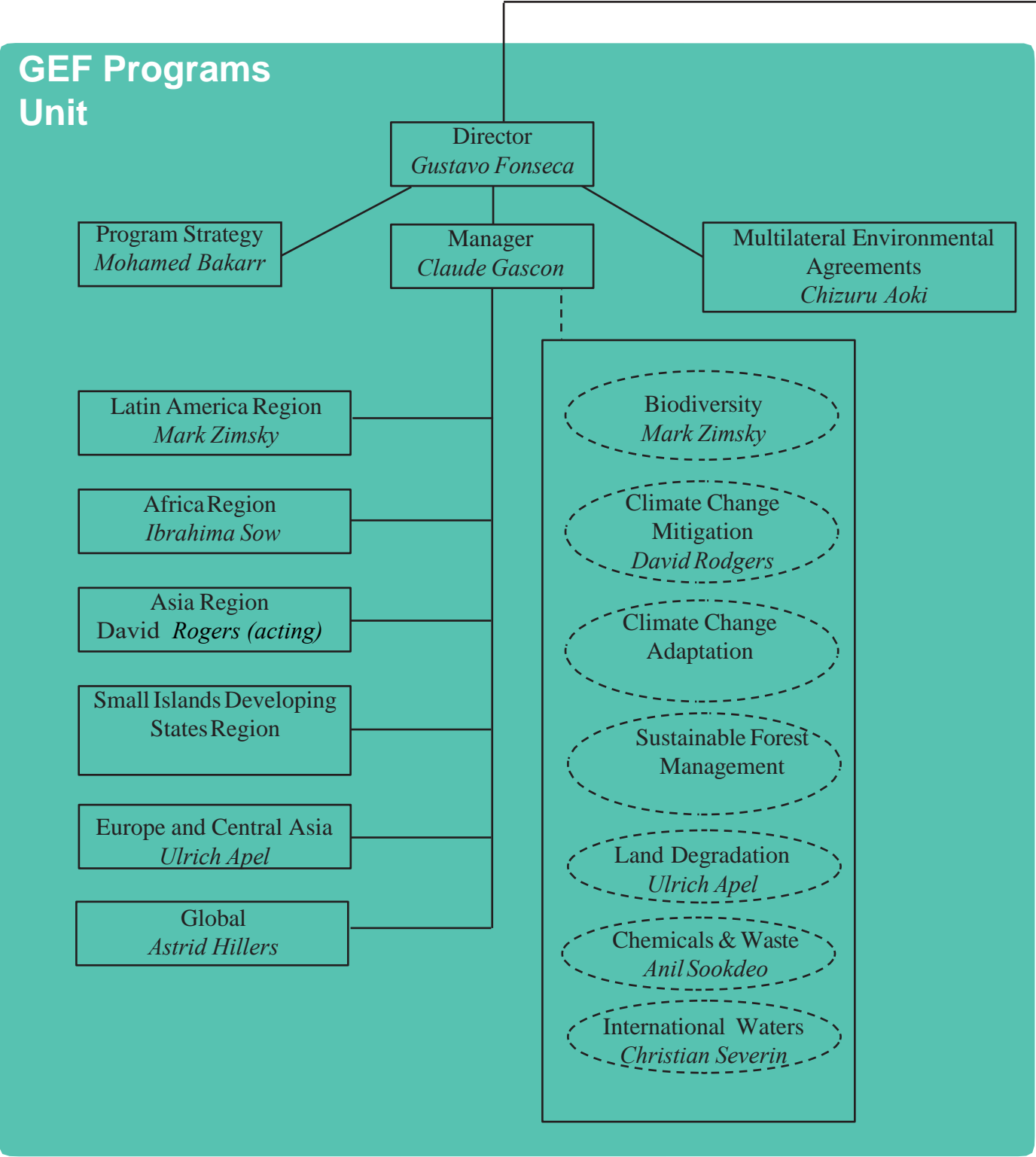
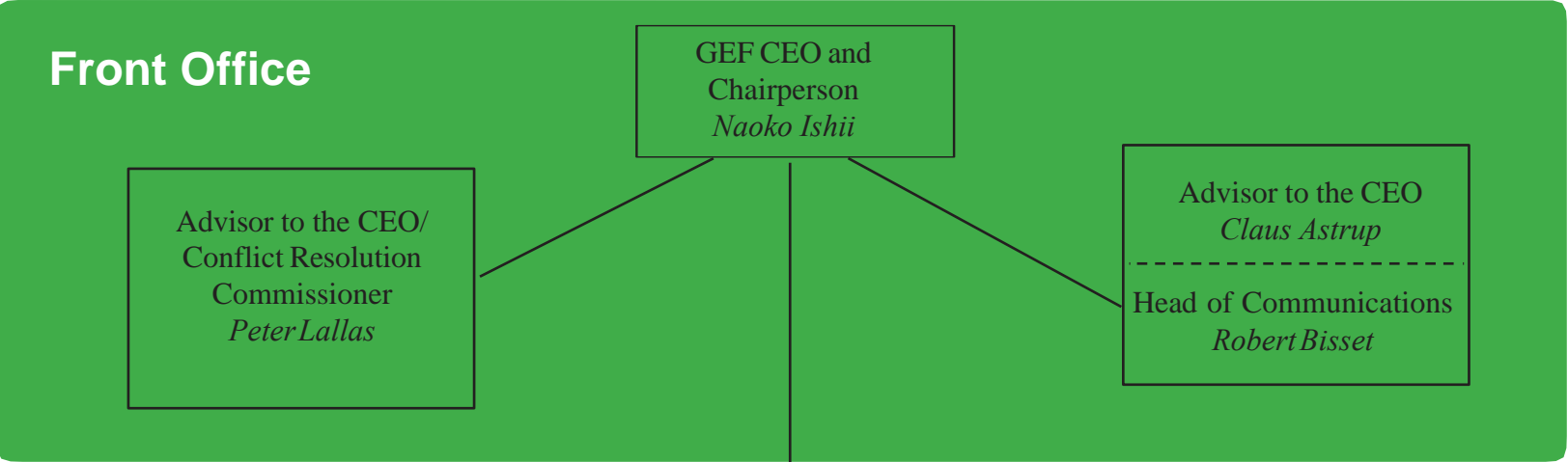
9337		FP	Climate Change	CEO endorsement of FSP	UNEP	Global (Chile, Costa Rica, Indonesia, Kazakhstan, Myanmar, Sudan, Tunisia, South Africa)	Global Project to Leapfrog Markets to Energy Efficient Lighting, Appliances and Equipment	Milena Vasquez	31-Jul-17	FSP recommended for endorsement (Docs circulating for clearance/signature)
------	--	----	----------------	------------------------	------	--	---	----------------	-----------	--

ID	IA ID	Type	Focal Area	Decision Sought	Proponen	Country	Project Title	Program Manage	Response Date	Remarks
9186		FP	Climate Change	CEO PIF Clearance for WPI	UNEP	Djibouti	Increasing Knowledge and Capacity for Mainstreaming Climate Change Adaptation into Regional Development Plans in Djibouti's Gobaad Plain and Tadjourah Ville	Dustin Schinn	31-Jul-17	Review Sheet sent to Agency for PIF revision
9675		MSP	Climate Change	CEO MSP Approval	UNEP, UNDP	Global	CBIT Global Coordination Platform	Dustin Schinn	1-Aug-17	MSP recommended for CEO approval (P.M. recommended for CEO approval)
9675		MSP	Climate Change	CEO MSP Approval	UNEP, UNDP	Global	CBIT Global Coordination Platform	Dustin Schinn	3-Aug-17	MSP approved by CEO
9337		FP	Climate Change	CEO endorsement of FSP	UNEP	Global (Chile, Costa Rica, Indonesia, Kazakhstan, Myanmar, Sudan, Tunisia, South Africa)	Global Project to Leapfrog Markets to Energy Efficient Lighting, Appliances and Equipment	Milena Vasquez	4-Aug-17	FSP circulated to Council before CEO endorsement (Due date COB September 4)

## UNIDO

9225		FP	Climate Change	CEO endorsement of FSP	UNIDO	Mozambique	Towards Sustainable Energy for All in Mozambique: Promoting Market-Based Dissemination of Integrated Renewable Energy Systems for Productive Activities in Rural Areas	Ming Yang	31-Jul-17	FSP recommended for endorsement (Technically cleared)
------	--	----	----------------	------------------------	-------	------------	--	-----------	-----------	---

<b>ID</b>	<b>IA ID</b>	<b>Type</b>	<b>Focal Area</b>	<b>Decision Sought</b>	<b>Proponen</b>	<b>Country</b>	<b>Project Title</b>	<b>Program Manage</b>	<b>Response Date</b>	<b>Remarks</b>
9225		FP	Climate Change	CEO endorsement of FSP	UNIDO	Mozambique	Towards Sustainable Energy for All in Mozambique: Promoting Market-Based Dissemination of Integrated Renewable Energy Systems for Productive Activities in Rural Areas	Ming Yang	31-Jul-17	FSP endorsed by CEO
9053		FP	Climate Change	CEO PIF Clearance for WPI	UNIDO	Argentina	Reducing Argentina's greenhouse gas emissions from the energy sector through the utilization of organic waste for energy generation in agriculture and agroindustries.	Ming Yang	1-Aug-17	Review Sheet sent to Agency for PIF revision



**Naoko Ishii**  
Chief Executive Officer and Chairperson  
[nishii@thegef.org](mailto:nishii@thegef.org)

## FRONT OFFICE

**Peter Lallas**

Advisor to the Chief Executive Officer  
[plallas@thegef.org](mailto:plallas@thegef.org)  
+1 202 473 9732

**Amornrat Ning Poopech**

Resource Management Officer  
[apoopech@thegef.org](mailto:apoopech@thegef.org)  
+1 202 458 4366

**Esther Pormes**

Senior Executive Assistant  
[epormes@thegef.org](mailto:epormes@thegef.org)  
+1 202 473 8736

**Claus Pram Astrup**

Advisor to the Chief Executive Officer  
[castrup@worldbank.org](mailto:castrup@worldbank.org)  
+ 1 202 478 7270

**Julienne Kouame**

Program Analyst  
[jkouame@thegef.org](mailto:jkouame@thegef.org)  
+1 202 473 8736

**Diego Riano Posada**

Special Assistant  
[drianoposada@thegef.org](mailto:drianoposada@thegef.org)  
+1 202 473 1444

## Communications

**Robert Bisset**

Head of Communications  
[rbisset@thegef.org](mailto:rbisset@thegef.org)  
+1 202 458 5191

**Patrizia Cocca**

Communications Officer and KM Coordinator  
[pcocca@thegef.org](mailto:pcocca@thegef.org)  
+1 202 458 0234

**Alua Satybaldina-Kennedy**

Communications Consultant  
[asatybaldina@worldbank.org](mailto:asatybaldina@worldbank.org)

**Christian Hofer**

Senior Communications Officer  
[chofer@thegef.org](mailto:chofer@thegef.org)  
+1 202 458 0936

**Camila Perez Gabilondo**

Communications Associate  
[cperez@thegef.org](mailto:cperez@thegef.org)  
+1 202 458 0895

**Olivier Besson**

Program Assistant  
[obesson@thegef.org](mailto:obesson@thegef.org)  
+1 202 473-8935

---

Mailing Address:

**GEF Secretariat**

1818 H Street, NW, MSN N8-800  
Washington, D.C. 20433  
+1 202 473 0508; Fax: +1 202 522 3240/3245

## POLICY AND OPERATIONS

### Francoise Clottes

Director

[fclottes@thegef.org](mailto:fclottes@thegef.org)

+1 202 473 8471

### Akila Nazneen

Senior Financial Assistant

[anazneen@thegef.org](mailto:anazneen@thegef.org)

+1 202 473 1760

### Amanda Adams

Program Assistant

[aadams@thegef.org](mailto:aadams@thegef.org)

+1 202 473 9878

### Christina Bogyo

Senior Program Assistant

[cbogyo@thegef.org](mailto:cbogyo@thegef.org)

+1 202 473 6974

### Christine Roehrer

Coordinator –Lead Results Based Management

[croehrer@worldbank.org](mailto:croehrer@worldbank.org)

+1 202 473-0337

### Deepak Kataria

Coordinator - Information Technology

[dkataria@thegef.org](mailto:dkataria@thegef.org)

+1 202 473 3881

### Gabriella Richardson-Temm

Coordinator – Gender and Social Issues

[grichardsontemm@thegef.org](mailto:grichardsontemm@thegef.org)

### Henry Salazar

Coordinator - Operations

[hsalazar@thegef.org](mailto:hsalazar@thegef.org)

+1 202 473 8226

### Herbert Acquay

Manager - Policy, Partnerships and Operations

[hacquay@worldbank.org](mailto:hacquay@worldbank.org)

+1 202 473 1043

### Juman Byun

Business Solutions Officer

[jbyun@thegef.org](mailto:jbyun@thegef.org)

+1 202 458 7987

### Knut Roland Sundstrom

Coordinator - Policy and Strategy

[ksundstrom@thegef.org](mailto:ksundstrom@thegef.org)

+1 202 473 7510

### Lesly Rigaud

Client Technologies Officer

[lrigaud@thegef.org](mailto:lrigaud@thegef.org)

+1 202 473 3881

### Minna Maria Kononen

Country Relations Officer

[nkononen@thegef.org](mailto:nkononen@thegef.org)

+1 202 473 9402

### Naiying Peng

Operations Analyst

[npeng@thegef.org](mailto:npeng@thegef.org)

+1 202 458 9580

### Nicolas Alejandro Marquez Pizzanelli

Operations Analyst

[nmarquez@thegef.org](mailto:nmarquez@thegef.org)

+1 202 473 9522

### Olha Krushelnytska

Operations Officer

[okrushelnytska@thegef.org](mailto:okrushelnytska@thegef.org)

+1 202 458 5839

**Omid Parhizkar**  
Operations Officer  
[oparhizkar@thegef.org](mailto:oparhizkar@thegef.org)  
+1 202 458 2186

**Pilar Barrera**  
Coordinator - Partnerships and  
Resource Mobilization  
[pbarrera@thegef.org](mailto:pbarrera@thegef.org)  
+1 202 458 9891

**Raul Rodriguez**  
Temporary  
[rrodriguez@thegef.org](mailto:rrodriguez@thegef.org)

**Regine Mpoyi**  
Program Assistant  
[rmpoyi@thegef.org](mailto:rmpoyi@thegef.org)  
+1 202 473 2754

**Seo-Jeong Yoon**  
Policy Officer  
[syoon@thegef.org](mailto:syoon@thegef.org)  
+1 202 473 7832

**Susan Waithaka**  
Country Relations Officer  
[swaithaka1@thegef.org](mailto:swaithaka1@thegef.org)  
+1 202 473 5457

**William Ehlers**  
Coordinator – Country Relations/  
Secretary to the Council  
[wehlers@thegef.org](mailto:wehlers@thegef.org)  
+1 202 458 9436

**Oreste Maia Andrade**  
Operations Analyst  
[omaiaandradejr@thegef.org](mailto:omaiaandradejr@thegef.org)  
+1 202 458 9387

**Quynh Xuan Thi Phan**  
Senior Financial Specialist  
[qphan1@worldbank.org](mailto:qphan1@worldbank.org)  
+1 202 458 4760

**Ramon Prudencio C de Mesa**  
Operations Officer  
[rmesa@thegef.org](mailto:rmesa@thegef.org)  
+1 202 458 9285

**Robert Schreiber**  
Program Coordinator  
[rschreiber@thegef.org](mailto:rschreiber@thegef.org)  
+1 202 458 0288

**Sonja Sabita Teelucksingh**  
Senior Environmental Specialist  
[steelucksingh@thegef.org](mailto:steelucksingh@thegef.org)  
+1 202 458 4004

**Thomas Biegel**  
Consultant  
[tbiegel@thegef.org](mailto:tbiegel@thegef.org)  
+1 202 473 9252

**Yasemin Biro**  
Coordinator - Knowledge Management  
[ybiro@thegef.org](mailto:ybiro@thegef.org)  
+1 202 473 1550

---

## PROGRAMS

### **Gustavo Fonseca**

Director

[gfonseca@thegef.org](mailto:gfonseca@thegef.org)

+1 202 458 4818

#### **Anil Bruce Sookdeo**

Chemicals and Waste Focal Area Coordinator

[asookdeo@thegef.org](mailto:asookdeo@thegef.org)

+1 202 458 0683

#### **Astrid Hillers**

Senior Environmental Specialist

[ahillers@thegef.org](mailto:ahillers@thegef.org)

+1 202 458 8173

#### **Christian Severin**

International Waters Focal Area Coordinator

[cseverin@thegef.org](mailto:cseverin@thegef.org)

+1 202 458 2001

#### **Cyrille Barnerias**

Senior Environment Specialist

[cbarnerias@thegef.org](mailto:cbarnerias@thegef.org)

+1 202 473 8871

#### **Evelyn Swain**

Environment Specialist

[eswain@thegef.org](mailto:eswain@thegef.org)

+1 202 473 1151

#### **Flavius Mihaies**

Consultant, Climate and

Chemicals [fmihaies@thegef.org](mailto:fmihaies@thegef.org)

+1 202 560 4934

#### **Ibrahima Sow**

Africa Regional Coordinator

[isow@thegef.org](mailto:isow@thegef.org)

+1 202 473 2716

#### **Asha Imani Bobb Semple**

Operations Analyst

[abobbsemples@thegef.org](mailto:abobbsemples@thegef.org)

+1 202 473 989

#### **Chizuru Aoki**

Lead Environmental Specialist -

Multilateral Environmental Agreements

[caoki@thegef.org](mailto:caoki@thegef.org)

+1 202 473 6068

#### **Claude Gascon**

Lead Program Manager

[cgascon@thegef.org](mailto:cgascon@thegef.org)

+1 202 458 9755

#### **David Rodgers**

Climate Change Mitigation Focal Area  
Coordinator

[drodgers@thegef.org](mailto:drodgers@thegef.org)

+1 202 458 9869

#### **Dustin Schinn**

Climate Change Specialist

[dschinn@thegef.org](mailto:dschinn@thegef.org)

+1 202 458 1234

#### **Fareeha Iqbal**

Senior Climate Change Specialist

[fiqbal1@thegef.org](mailto:fiqbal1@thegef.org)

+1 202 458 9593

#### **Glynis Barber**

Program Assistant

[gbarber@thegef.org](mailto:gbarber@thegef.org)

+1 202 473 9647

#### **Jaime Cavelier**

Senior Biodiversity Specialist

[jcavelier@thegef.org](mailto:jcavelier@thegef.org)

+1 202 473 4886

**Jean-Marc Sinnassamy**  
Senior Environmental Specialist  
[jsinnassamy@thegef.org](mailto:jsinnassamy@thegef.org)  
+1 202 478 8060

**Katya Yuh Kuang-Idba**  
Climate Change Specialist  
[kkuangidba@thegef.org](mailto:kkuangidba@thegef.org)  
+1 202 473 4364

**Kettly Denis**  
Program Assistant  
[kdenis@thegef.org](mailto:kdenis@thegef.org)  
+1 202 473 0825

**Leah Karrer**  
Senior Environmental Specialist  
[lkarrer@thegef.org](mailto:lkarrer@thegef.org)  
+1 202 473 8364

**Mark Zimsky**  
Latin America Regional Coordinator/ Biodiversity  
Focal Area Coordinator  
[nzimsky@thegef.org](mailto:nzimsky@thegef.org)  
+1 202 473 7855

**Masako Ogawa**  
Senior Environment Specialist  
[mogawa2@thegef.org](mailto:mogawa2@thegef.org)  
+1 202 458 2789

**Milena Gonzalez Vasquez**  
Junior Professional Associate  
[mgonzalezvasquez@thegef.org](mailto:mgonzalezvasquez@thegef.org)  
+1 202 458 1284

**Ming Yang**  
Senior Climate Change Specialist  
[myang@thegef.org](mailto:myang@thegef.org)  
+1 202 473 5707

**Mohamed Imam Bakarr**  
Lead Environmental Specialist - Program Strategy  
[mbakarr@thegef.org](mailto:mbakarr@thegef.org)  
+1 202 458 8890

**Monica Fernandes**  
Senior Program Assistant  
[mfernandes@thegef.org](mailto:mfernandes@thegef.org)  
+1 202 473 9647

**Nhu Quynh Phan**  
Program Assistant  
[nphan@thegef.org](mailto:nphan@thegef.org)  
+1 202 473 4236

**Nicole Glineur**  
Senior Environmental Specialist  
[nglineur@thegef.org](mailto:nglineur@thegef.org)  
+1 202 473 2512

**Pascal Martinez**  
Senior Climate Change Specialist  
[pmartinez2@thegef.org](mailto:pmartinez2@thegef.org)  
+1 202 458-9755

**Paul Hartman**  
Senior Environmental Specialist  
[phartman@thegef.org](mailto:phartman@thegef.org)

**Saliha Dobardzic**  
Senior Climate Change Specialist  
[sdobardzic@thegef.org](mailto:sdobardzic@thegef.org)  
+1 202 473 5943

**Shakil Kayani**  
Program Assistant  
[skayani@thegef.org](mailto:skayani@thegef.org)  
+1 202 458 4680

**Sarah Wyatt**  
Operations Analyst  
[swyatt@thegef.org](mailto:swyatt@thegef.org)  
+1 202 473 0534

**Steffen Hansen**  
Environmental Specialist  
[shansen@thegef.org](mailto:shansen@thegef.org)  
+1 202 458 8796

**Tigest Tirfe**  
Program Assistant  
[ttirfe@thegef.org](mailto:ttirfe@thegef.org)  
+1 202 458 9297

**Ulrich Apel**  
Europe and Central Asia Regional Coordinator/  
Land Degradation Focal Area Coordinator  
[uapel@thegef.org](mailto:uapel@thegef.org)  
+1 202 473 2573

**Xiaomei Tan**  
Senior Climate Change Specialist  
[xtan1@thegef.org](mailto:xtan1@thegef.org)  
+1 202 473 7448

---

## INDEPENDENT EVALUATION OFFICE

### Juha Uitto

Director

GEF Independent Evaluation Office

[juitto@thegef.org](mailto:juitto@thegef.org)

#### Anupam Anand

Evaluation Officer

[aanand2@thegef.org](mailto:aanand2@thegef.org)

+202-473-3147

#### Geeta Batra

Deputy Director and  
Chief Evaluation Officer

[gbatra@thegef.org](mailto:gbatra@thegef.org)

+202-473-4442

#### Carlo Carugi

Senior Evaluation Officer

[ccarugi@thegef.org](mailto:ccarugi@thegef.org)

+1 202 473 8154

#### Anna Viggh

Senior Evaluation Officer

[aviggh@worlbank.org](mailto:aviggh@worlbank.org)

+1 202 4738896

#### Kseniya Temnenko

Knowledge Management Officer

[ktemnenko@thegef.org](mailto:ktemnenko@thegef.org)

+1 202 458 4908

#### Jeneen Garcia

Evaluation Officer

[jgarcia2@thegef.org](mailto:jgarcia2@thegef.org)

+1 202 458 2719

#### Francisco Grahammer

Information Analyst

[fgrahammer@thegef.org](mailto:fgrahammer@thegef.org)

+1 202 473 4914

#### Kyoko Matsumoto

Senior Evaluation Officer

[kmatsumoto@thegef.org](mailto:kmatsumoto@thegef.org)

+1 202 473 2609

#### Marie-Constance Manuella Koukoui

Senior Executive Assistant

[mkoukoui@thegef.org](mailto:mkoukoui@thegef.org)

+1 202 458 9682

#### Khondoker Tanveer Haider

Consultant

[khaider@thegef.org](mailto:khaider@thegef.org)

#### Neeraj Kumar Negi

Senior Evaluation Officer

[nnegi1@thegef.org](mailto:nnegi1@thegef.org)

+1 202 473 2259

#### Juan Portillo

Senior Operations Officer

[jportillo@worlbank.org](mailto:jportillo@worlbank.org)

+1 202 473 6056

#### Baljit Wadhwa

Senior Evaluation Officer

[bwadhwa@worlbank.org](mailto:bwadhwa@worlbank.org)

+1 202 473 0266

#### Dennis Bours

Evaluation Officer

[sdbours@thegef.org](mailto:sdbours@thegef.org)

+1 202 458 9153

#### Malac Kabir

Research Assistant

[mkabir4@thegef.org](mailto:mkabir4@thegef.org)

+1 202 473 1808

#### Molly Watts

Evaluation Analyst

[mwatts1@thegef.org](mailto:mwatts1@thegef.org)

+1 202 473 3675

#### Sara El Choufi

Evaluation Analyst

[selchoufi@thegef.org](mailto:selchoufi@thegef.org)

+1 202 458 7069

#### Peixuan Zhou

Evaluation Analyst

[pzhou2@thegef.org](mailto:pzhou2@thegef.org)

+1 202 473 1703

#### Evelyn Chihuguyu

Program Assistant

[echihuguyu@thegef.org](mailto:echihuguyu@thegef.org)

+1 202 473 0654

#### Laura Reynolds Nissley

Consultant

[lnissley@thegef.org](mailto:lnissley@thegef.org)

## ADAPTATION FUND BOARD SECRETARIAT

**Mikko Antti Ollikainen**  
Senior Environmental Specialist  
[mollikainen@adaptation-fund.org](mailto:mollikainen@adaptation-fund.org)  
+1 202 458 8912

**Silvia Mancini**  
Operations Officer  
[smancini@adaptation-fund.org](mailto:smancini@adaptation-fund.org)

**Aya Mimura**  
Operations Associate  
[amimura@adaptation-fund.org](mailto:amimura@adaptation-fund.org)  
+1 202 458 7347

**Sophie Hans-Moevi**  
Senior Program Assistant  
[shansmoevi@adaptation-fund.org](mailto:shansmoevi@adaptation-fund.org)  
+1 202 473 0701

**Matthew Pueschel**  
Consultant  
[mpueschel@adaptation-fund.org](mailto:mpueschel@adaptation-fund.org)  
+1 202 473 6743

**Anni Rein**  
Temporary  
[arein@adaptation-fund.org](mailto:arein@adaptation-fund.org)  
+1 202 458 9758

**Daouda Ben Oumar Ndiaye**  
Senior Climate Change Specialist  
[dndiaye@adaptation-fund.org](mailto:dndiaye@adaptation-fund.org)  
+1 202 473 4611

**Young Hee Lee**  
Operations Analyst  
[ylee12@adaptation-fund.org](mailto:ylee12@adaptation-fund.org)  
+1 202 473 8219

**Farayi Onias Madziwa**  
Program Officer  
[fmadziwa@adaptation-fund.org](mailto:fmadziwa@adaptation-fund.org)  
+1 202 458 5184

**Hugo Remaury**  
Junior Professional Associate  
[hremaury@adaptation-fund.org](mailto:hremaury@adaptation-fund.org)  
+1 202 473 5463

**Alicia Marie Austin**  
Temporary  
[aaustin@adaptation-fund.org](mailto:aaustin@adaptation-fund.org)  
+1 202 458 9758

# GEF DIRECTORY OF ADDRESSEES

## GEF Secretariat

**GEF Secretariat<sup>1</sup>**  
**Program Coordination Registry**  
1818 H Street, NW  
Washington, D.C. 20433, USA  
[gcoordination@thegef.org](mailto:gcoordination@thegef.org)

Attn: Mr. Henry Salazar  
Coordinator - Operations  
[hsalazar@thegef.org](mailto:hsalazar@thegef.org)  
+1 202 473 8226

## GEF Trustee

**International Bank for Reconstruction and Development (The World Bank) Registry**  
1818 H Street, NW  
Washington, D.C. 20433, USA  
[geftrustee@worldbank.org](mailto:geftrustee@worldbank.org)

Mr. Praveen Desabatla  
Team Leader, DFPTF  
[pdesabatla@worldbank.org](mailto:pdesabatla@worldbank.org)  
+1 202 458 2099

## Convention Secretariats

**UN Convention on Biological Diversity (CBD)**  
413 rue Saint-Jacques, Suite 800  
Montreal, Quebec, Canada H2Y 1 N9  
[Secretariat@cbd.int](mailto:Secretariat@cbd.int)

Attn: Mr. Braulio F. de Souza Dias  
Executive Secretary  
*GEF Contact Person: Mr. Yibin Xiang*  
*Program Officer*  
[Yibin.xiang@cbd.int](mailto:Yibin.xiang@cbd.int)  
+1 514 288 2220

**UN Framework on Climate Change Convention (UNFCCC)**  
Haus Carstanjen  
Martin Luther King Strasse 8  
53175 Bonn, Germany  
[secretariat@unfccc.int](mailto:secretariat@unfccc.int)

Attn: Ms. Patricia Espinosa  
Executive Secretary  
*GEF Contact Person(s):*  
- *Ms. Deschen Tsering*  
[DTsering@unfccc.int](mailto:DTsering@unfccc.int)  
- *Mr. Alejandro Kilpatrick*  
[AKilpatrick@unfccc.int](mailto:AKilpatrick@unfccc.int)  
  
[gefenabling.activities@unfccc.int](mailto:gefenabling.activities@unfccc.int)  
[gefprojects@unfccc.int](mailto:gefprojects@unfccc.int)

**Secretariat of the Basel, Rotterdam and Stockholm Conventions**  
UNEP International Environment House 1  
11-13 Chemin des Anemones  
1219 Chatelaine, Geneva, Switzerland

Attn: Dr. Rolph Payet  
Executive Secretary  
*Mr. Frank Moser*  
*GEF Focal Point*  
*Office of the Executive Secretary*  
[frank.moser@brsmeas.org](mailto:frank.moser@brsmeas.org)  
+41 22 917 8951

---

<sup>1</sup> GEF Secretariat's physical address: 1899 Pennsylvania Avenue, NW, Washington, D.C. 20006

---

**UN Convention to Combat Desertification  
(UNCCD)**

Herrmann-Ehlers Str. 10  
D-53113 Bonn, Germany  
[secretariat@unccd.int](mailto:secretariat@unccd.int)

Attn: Ms. Monique Barbut  
Executive Secretary

*GEF Contact Person: Ms. Anja Thust  
Program Officer, FCMI Unit*

[athust@unccd.int](mailto:athust@unccd.int)  
+49 228 815 2828

---

**Interim Secretariat of the Minamata Convention**

International Environment House 1  
13, chemin des Anémones  
CH-1219 Chatelaine, Geneva  
Switzerland

Mr. Jacob Duer  
Coordinator, Minamata Convention  
[jacob.duer@unep.org](mailto:jacob.duer@unep.org)  
+41 22 917 82 17

---

## STAP Panel and Secretariat

### Panel

**Rosina Bierbaum**

Chairperson

[rbierbau@umich.edu](mailto:rbierbau@umich.edu)

+1 734 763 8675

---

**Ralph E. Sims**

Panel Member on Climate Change Mitigation

[R.E.Sims@massey.ac.nz](mailto:R.E.Sims@massey.ac.nz)

+64 21 166 4555

---

**Brian Child**

Panel Member on Biodiversity

[bchild@ufl.edu](mailto:bchild@ufl.edu)

+352 392 0494

---

**Ricardo Barra**

Panel Member on Chemicals & Waste

[ricbarra@udec.cl](mailto:ricbarra@udec.cl)

56-41-2204002

---

**Annette Cowie**

Panel Member on Land Degradation

[annette.cowie@une.edu.au](mailto:annette.cowie@une.edu.au)

+61 2 677 28080

---

**Ferenc Toth**

Panel Member of Adaptation

[ferenc3toth@gmail.com](mailto:ferenc3toth@gmail.com)

+43 2236 864501

---

**Michael Stocking**

Advisor to the STAP Chair

[m.stocking@uea.ac.uk](mailto:m.stocking@uea.ac.uk)

+44 1603 592 339

---

**Thomas E. Lovejoy**

Advisor to the STAP Chair

[tlovejoy@unfoundation.org](mailto:tlovejoy@unfoundation.org)

---

### Secretariat

**Christopher Whaley**

STAP Secretary

[christopher.whaley@unenvironment.org](mailto:christopher.whaley@unenvironment.org)

+1 202 974 1318

---

**Guadalupe Duron**

Programme Officer

[guadalupe.duron@unenvironment.org](mailto:guadalupe.duron@unenvironment.org)

+1 202 974 1313

---

**Robin Burgess**

Programme Assistant

[robin.burgess@unenvironment.org](mailto:robin.burgess@unenvironment.org)

+1 202 974 1311

---

**Sarah Lebel**

Climate Adaptation and Resilience Specialist

[sarah.lebel@unenvironment.org](mailto:sarah.lebel@unenvironment.org)

+1 202 621 5036

---

**Virginia Gorsevski**

Senior Programme Officer

[virginia.gorsevski@unenvironment.org](mailto:virginia.gorsevski@unenvironment.org)

+1 202 621 5020

---

**Sunday A. Leonard (PhD)**

Senior Programme Officer

[sunday.leonard@unenvironment.org](mailto:sunday.leonard@unenvironment.org)

+ 33 (0) 1 44 37 19 98

---

## GEF Agency Secretariats

**African Development Bank (AfDB) Registry**  
Headquarters  
01 BP 1387 Abidjan 01  
Côte d'Ivoire  
[Gef\\_afdb@afdb.org](mailto:Gef_afdb@afdb.org)

Mr. Mahamat Assouyouli  
GEF Coordinator  
[m.assouyouli@afdb.org](mailto:m.assouyouli@afdb.org)

*Copy to:*  
*Mr. Kurt Lonsway*  
*Division Manager, Environment and Climate Change*  
[k.lonsway@afdb.org](mailto:k.lonsway@afdb.org)

**Asian Development Bank (ADB) Registry**  
6 ADB Avenue  
Mandaluyong City 1550  
Metro Manila, Philippines  
[adbgef@adb.org](mailto:adbgef@adb.org)

Attn: Mr. Nessim Ahmad  
Deputy Director General, Sustainable Development and Climate Change Development and GEF Official Focal Point  
[njahmad@adb.org](mailto:njahmad@adb.org)

*Copy to:*  
*Mr. Bruce Dunn*  
*Principal Environment Specialist, Environment and Safeguards and ADB/GEF Coordinator*  
[bdunn@adb.org](mailto:bdunn@adb.org)  
+632 683 1922/ +632 683 1923

**European Bank for Reconstruction and Development (EBRD) Registry**  
One Exchange Square  
London EC2A 2JN, United Kingdom  
[ebrdgef@ebrd.com](mailto:ebrdgef@ebrd.com)

Attn: Ms. Marta Simonetti  
Senior Manager  
(Multilateral Funds – Climate and Environment)  
EBRD GEF Executive Coordinator  
Donor Co-Financing – VP Policy  
[simonetm@ebrd.com](mailto:simonetm@ebrd.com)  
+ 0044 (0) 207338 7259  
+ 0044 (0) 7921 039815

**United Nations Food and Agriculture Organization (FAO) Registry**  
Viale Dell Terme di Caracalla  
00153 Rome, Italy  
[GEF-Coordination-Unit@fao.org](mailto:GEF-Coordination-Unit@fao.org)

Attn: Mr. Gustavo Merino  
Director, Investment Centre Division  
[TCI-Director@fao.org](mailto:TCI-Director@fao.org)  
[faogef@fao.org](mailto:faogef@fao.org)  
+3906 570 54477

*Copy to:*  
*Mr. Jeffrey Griffin*  
*Senior Coordinator - GEF*  
*Investment Center Division*  
[Jeffrey.Griffin@fao.org](mailto:Jeffrey.Griffin@fao.org)  
+3906 570 55680

## GEF Agency Secretariats cont'd

### **Inter-American Development Bank (IDB) Registry**

1300 New York Avenue, NW  
Washington, D.C. 20577, USA  
[idb-gef@iadb.org](mailto:idb-gef@iadb.org)

### **International Bank for Reconstruction and Development (The World Bank) Registry**

1818 H Street, NW Washington,  
D.C. 20433, USA  
[wbgefoperations@worldbank.org](mailto:wbgefoperations@worldbank.org)

Ms. Emilia Battaglini GEF  
Executive Coordinator  
[ebattaglini@worldbank.org](mailto:ebattaglini@worldbank.org)  
+ 1 202 458 0378

*Copy to:*  
*Shaanti Kapila*  
[skapila@worldbank.org](mailto:skapila@worldbank.org)

### **International Fund for Agricultural Development (IFAD) Registry**

Via Paolo di Dono, 44  
00142 Rome, Italy  
[ECDmailbox@ifad.org](mailto:ECDmailbox@ifad.org)

Mr. Perin Saint-Ange  
Associate Vice President,  
Programme Management Department  
[p.saintange@ifad.org](mailto:p.saintange@ifad.org)  
+39 06 5459 2448

*Copy to:*  
*Ms. Margarita Astrálaga*  
*Director, Environment and Climate Division*  
[m.astralaga@ifad.org](mailto:m.astralaga@ifad.org)  
*Tel: +39 06 5459 2151*

*Ms. Sheila Mwanundu*  
[s.mwanundu@ifad.org](mailto:s.mwanundu@ifad.org)

*Ms. Aisha Nazario*  
[a.nazario@ifad.org](mailto:a.nazario@ifad.org)  
*Tel: +39 06 5459 2459*  
*Ms. Estibalitz Morras*  
[e.morras@ifad.org](mailto:e.morras@ifad.org)  
*Tel: +39 06 5459 2438*

### **United Nations Environment Programme (UN Environment) Registry**

United Nations Avenue  
Gigiri, PO Box 30552  
00100 Nairobi, Kenya  
[Unepgef@unep.org](mailto:Unepgef@unep.org)

Ms. Kelly West  
GEF Coordinator  
[Kelly.West@unep.org](mailto:Kelly.West@unep.org)  
+254 20 762 4147

Local Office:

900 17th Street, NW  
Suite 506, Washington, D.C. 20006

## GEF Agency Secretariats cont'd

**United Nations Industrial Development Organization (UNIDO) Registry**  
Vienna International Centre  
PO Box 300  
A-1400 Vienna, Austria  
[gef@unido.org](mailto:gef@unido.org)

Mr. Juergen Hierold  
GEF Coordinator  
[J.Hierold@unido.org](mailto:J.Hierold@unido.org)  
+43 1 26026 4565

*Copy to:*  
*Ms. Pamela Mikschofsky*  
[p.mikschofsky@unido.org](mailto:p.mikschofsky@unido.org)

**United Nations Development Programme (UNDP) Registry**  
304 East 45th Street  
New York, NY 10017, USA  
[undpgef@undp.org](mailto:undpgef@undp.org)

Attn: Ms. Adriana Dinu  
GEF Executive Coordinator  
[Adriana.dinu@undp.org](mailto:Adriana.dinu@undp.org)  
+1 212 906 5143

## GEF Project Agency Secretariats

**Corporación Andina de Fomento (CAF)**  
380 Enrique Canaval Moreyra Ave., 13th Floor,  
San Isidro, Lima  
Lima 27, Peru  
[CAFGEF@caf.com](mailto:CAFGEF@caf.com)

Attn: René Gómez García Palao  
Senior Executive  
[rgomezgarcia@caf.com](mailto:rgomezgarcia@caf.com)  
+511-710-8530

*Copy to:*  
*Ms. Ligia Castro de Doens,*  
*Director*  
*Environment*  
[lcastro@caf.org](mailto:lcastro@caf.org)

**Conservation International (CI)**  
2011 Crystal Drive, Suite 500  
Arlington VA, 22202  
USA  
[CIGEF@conservation.org](mailto:CIGEF@conservation.org)

Attn: Mr. Miguel Morales  
Vice President/ Managing Director  
CI-GEF Project Agency  
[mamorales@conservation.org](mailto:mamorales@conservation.org)

*Copy to:*  
[osamaroo@conservation.org](mailto:osamaroo@conservation.org)

## GEF Project Agency Secretariats cont'd

---

**Development Bank of Southern Africa  
(DBSA)**

1258 Lever Road, Headway Hill  
Midrand, 1685  
South Africa  
[DBSAGEF@dbsa.org](mailto:DBSAGEF@dbsa.org)

Attn: Ms. Nomsa T. Zondi  
GEF Coordinator  
[nomsaz@dbsa.org](mailto:nomsaz@dbsa.org)  
+27 11 313 3491

**Foreign Economic Cooperation Office  
(FECO)**

Ministry of Environmental Protection  
ECO Building  
No.5 Houyingfang Hutong  
Xicheng District, Beijing 100035, China  
[FECOGEF@mepfeco.org.cn](mailto:FECOGEF@mepfeco.org.cn)

Attn: Mr. Xiao Xuezhi  
Deputy Director General  
[xiao.xuezhi@mepfeco.org.cn](mailto:xiao.xuezhi@mepfeco.org.cn)  
+ 86-10-82268807

*Copy to:*  
*Ms. Chen Haijun*  
*Director,*  
[chen.haijun@mepfeco.org.cn](mailto:chen.haijun@mepfeco.org.cn)  
+ 86-10-82268846

Ms. Yan Wei  
Senior Project Manager  
[yan.wei@mepfeco.org.cn](mailto:yan.wei@mepfeco.org.cn)  
+ 86-10-82268848

**International Union for Conservation of  
Nature (IUCN)**

Rue Mauverney, 28  
CH-1196 Gland,  
Switzerland  
[IUCNCEF@iucn.org](mailto:IUCNCEF@iucn.org)

Attn: Cyrie Sendashonga  
Global Director, Policy and Programme  
[Cyriaque.Sendashonga@iucn.org](mailto:Cyriaque.Sendashonga@iucn.org)  
+41 22 999 03 17

*Copy to:*  
*Mr. Jean-Yves Pirot,*  
*Head, GEF Coordination Unit*  
[jean-yves.pirot@iucn.org](mailto:jean-yves.pirot@iucn.org)  
+41 22 999 02 56

*Mr. Sébastien Delahaye*  
*Portfolio Manager*  
*GEF Coordination Unit*  
[Sebastien.Delahaye@iucn.org](mailto:Sebastien.Delahaye@iucn.org)  
+41 22 999 02 51

---

## GEF Project Agency Secretariats cont'd

---

**World Wildlife Fund, Inc. (WWF-US)**

1250 24th St, NW  
Washington, DC 20037-1193  
[WWFGEF@wwfus.org](mailto:WWFGEF@wwfus.org)

Attn: Dr. David S. McCauley  
Senior Vice President  
Policy and Government Affairs  
[david.mccauley@wwfus.org](mailto:david.mccauley@wwfus.org)  
+1-202-495-4159

*Copy to:*  
*Mr. Hervé Lefevre*  
*Senior Director, GEF Relations and*  
*GEF Coordinator*  
[Herve.Lefevre@wwfus.org](mailto:Herve.Lefevre@wwfus.org)  
+1-202-459-8533

**Fundo Brasileiro para a Biodiversidade (FUNBIO)**

Rua Voluntários da Pátria, 286 5º andar  
Botafogo, Rio de Janeiro, RJ  
22270-014  
[funbiogef@funbio.org.br](mailto:funbiogef@funbio.org.br)

Attn: Fabio Heuseler Ferreira Leite  
GEF Coordinator  
[fabio.leite@funbio.org.br](mailto:fabio.leite@funbio.org.br)  
+ 55 21 2123-5326

*Copy to:*  
[agenciageg@funbio.org.br](mailto:agenciageg@funbio.org.br)

**Banque Ouest Africaine de Développement (BOAD)**

68 Avenue de La Liberation  
1172 - Lomé / Togo

Attn: Almamy Mbengue  
Director of Environment and  
Finance Climate,  
GEF Coordinator and Focal  
Point [ambengue@boad.org](mailto:ambengue@boad.org)  
+(228)22.232.525.24

*Copy to:*  
*Ibrahim Traore*  
*Principal Economist of environment,*  
*GEF Alternate Focal Point*  
[itraore@boad.org](mailto:itraore@boad.org)  
+1(228)22.23.26.92

*Copy to:*  
*Ms. Sangare-Toure Fatoumata*  
[ftoure@boad.org](mailto:ftoure@boad.org)

---

**DISTRIBUTION LIST WHEN SUBMITTING PROJECT PROPOSALS  
FOR GEF CEO APPROVAL/ENDORSEMENT**

As a rule, all GEF Agencies are expected to circulate their project proposals to the GEF Secretariat, GEF Agencies, and STAP and to the relevant Convention Secretariat.

**Standard Distribution List for all projects (PIF, PPG, FSP, MSP, and EA):**

gcoordination@thegef.org  
STAP.Secretariat@unenvironment.org  
christopher.whaley@unenvironment.org  
adbgef@adb.org  
bdunn@adb.org  
njahmad@adb.org  
gef\_afdb@afdb.org  
m.assouyouti@afdb.org  
k.lonsway@afdb.org  
ambengue@boad.org  
dtoe@boad.org  
itraore@boad.org  
straore@boad.org  
ytoure@boad.org  
CAFGEF@caf.com  
rgomezgarcia@caf.com  
lcastro@caf.org  
CIGEF@conservation.org  
lspijkerman@conservation.org  
osamaroo@conservation.org  
DBSAGEF@dbsa.org  
nomsaz@dbsa.org  
ebrdgef@ebrd.com  
simonetm@ebrd.com  
GEF-Coordination-Unit@fao.org  
faogef@fao.org  
TCI-Director@fao.org  
Jeffrey.Griffin@fao.org  
FECOGEF@mepfeco.org.cn  
xiao.xuezhi@mepfeco.org.cn  
chen.haijun@mepfeco.org.cn  
yan.wei@mepfeco.org.cn  
FUNBIOGEF@funbio.org.br  
agenciagef@funbio.org.br  
fabio.leite@funbio.org.br  
idb-gef@iadb.org  
jbonilla@iadb.org  
paolap@iadb.org  
ECDmailbox@ifad.org  
p.saintange@ifad.org  
m.astralaga@ifad.org  
l.laganda@ifad.org  
a.nazario@ifad.org  
IUCNGEF@iucn.org  
Cyriaque.Sendashonga@iucn.org  
Sebastien.Delahaye@iucn.org  
jean-yves.piro@iucn.org  
unepgef@unep.org  
brennan.vandyke@unep.org  
Kelly.West@unep.org  
gef@unido.org  
j.hierold@unido.org  
p.mikschofsky@unido.org  
undpgef@undp.org  
adriana.dinu@undp.org  
wbgefoperations@worldbank.org  
WWFGEF@wwfus.org  
David.McCauley@wwfus.org  
Herve.Lefeuvre@wwfus.org

**To be included in the Standard Distribution List as appropriate:**

*For Biodiversity Projects:*

secretariat@cbd.int  
yibin.xiang@cbd.int

*For Climate Change Projects:*

gefprojects@unfccc.int  
gefenabling.activities@unfccc.int

*For Land Degradation Projects:*

secretariat@unccd.int  
athust@unccd.int

*For Mercury Projects*

jacob.duer@unep.org  
shelia.logan@unep.org

*For POPs Projects:*

ta@brsmeas.org  
maria.cardenas@brsmeas.org  
frank.moser@brsmeas.org