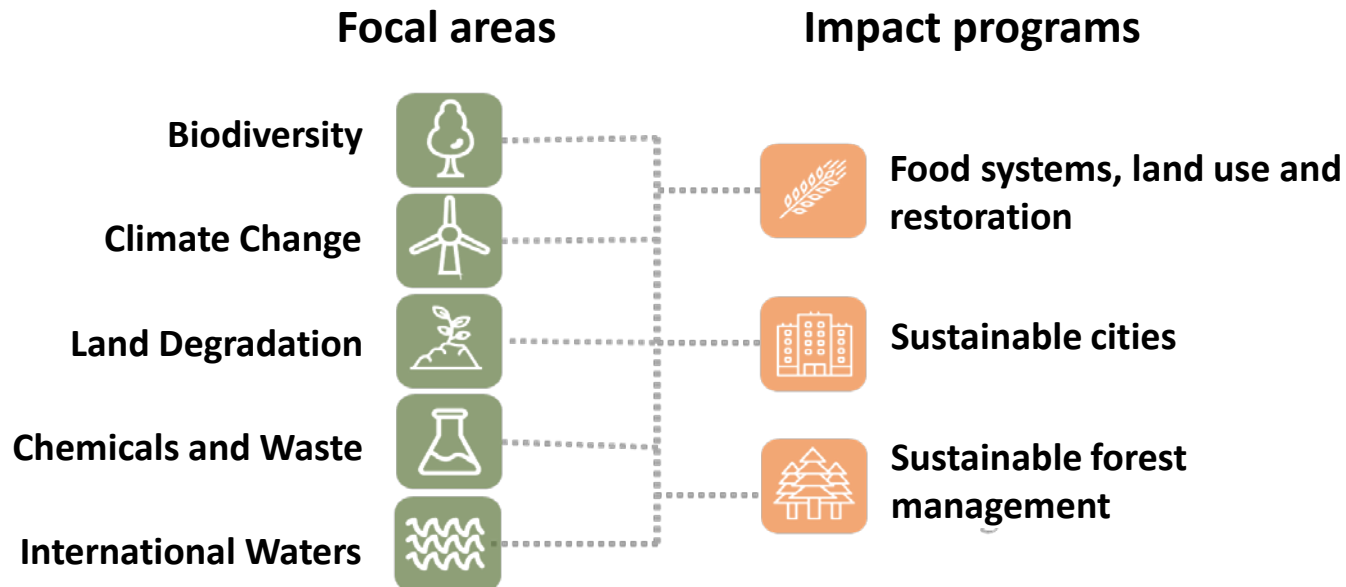


The GEF-7 Programming Directions



GLOBAL ENVIRONMENT FACILITY
INVESTING IN OUR PLANET

The GEF-7 Programming Directions

Core Indicators	GEF-7 Targets
Terrestrial protected areas created or under improved management for conservation and sustainable use (million hectares)	200
Marine protected areas created or under improved management for conservation and sustainable use (million hectares)	8
Area of land restored (million hectares)	6
Area of landscapes under improved practices (million hectares; excluding protected areas)	320
Area of marine habitat under improved practices to benefit biodiversity (million hectares; excluding PAs)	28
Greenhouse Gas Emissions Mitigated (million metric tons of CO ₂ e)	1500
Number of shared water ecosystems (fresh or marine) under new or improved cooperative management	32
Globally over-exploited marine fisheries moved to more sustainable levels (thousand metric tons)	3500
Reduction, disposal/destruction, phase out, elimination and avoidance of chemicals of global concern and their waste in the environment and in processes, materials and products (thousand metric tons of toxic chemicals reduced)	100
Reduction, avoidance of emissions of POPs to air from point and non-point sources (grams of toxic equivalent gTEQ)	1300
Number of direct beneficiaries disaggregated by gender as co-benefit of GEF investment	



GLOBAL ENVIRONMENT FACILITY
INVESTING IN OUR PLANET

Focal Areas

1) Biodiversity Focal Area (GEF-7 \$1,292 million)

- **Goal:** Maintain globally significant biodiversity in landscapes and seascapes
- **Objectives:**
 - **Mainstream biodiversity** across sectors as well as landscapes and seascapes;
 - Address direct drivers to **protect habitats and species**; and
 - Further develop biodiversity **policy and institutional frameworks**.



GLOBAL ENVIRONMENT FACILITY
INVESTING IN OUR PLANET

Focal Areas

2) Climate Change Focal Area (GEF-7 \$802 million)

- **GEF-7 Climate Change Focal Area Strategy**

The GEF-7 Climate Change Focal Area Strategy aims to support developing countries to make transformational shifts towards low emission and climate-resilient development pathways.

- To achieve such outcomes, the CCM Strategy hinges on three objectives:
 - Promote innovation and technology transfer for sustainable energy breakthroughs
 - Demonstrate mitigation options with systemic impacts (through the impact programs)
 - Foster enabling conditions for mainstreaming mitigation concerns into sustainable development strategies



GLOBAL ENVIRONMENT FACILITY
INVESTING IN OUR PLANET

Focal Areas

3) Land Degradation Focal Area (GEF-7 \$475 million)

- **Goals**

- Alignment with UNCCD LDN Agenda
- Integration with Impact Programs
- Harness private capital and to finance investments in SLM



GLOBAL ENVIRONMENT FACILITY
INVESTING IN OUR PLANET

Focal Areas

4) Chemicals and Waste Focal Area (GEF-7 \$599 million)

- **Goal: Eliminate the use and emissions of POPs, ODS and Mercury through:**
 - **Industrial Chemicals Program**, will eliminate POPs, Mercury and ODS by focusing on major industrial sectors that use or produce chemicals covered by the MEAs such as ASGM, textiles, plastics, electronics, consumer products etc.
 - **Agricultural Chemicals Program**, will eliminate POPs, HHPs and mercury based agricultural chemicals and introduce low or non-chemical alternatives and practices. It will also focus on the management and safe disposal of agricultural plastics contaminated by POPs and mercury.
 - **LDC/SIDS program** will foster regional approaches, incubate technologies that are developed in these countries and seek to create economies of scale for achieving the sound management of chemicals and waste.
- **Support Convention Enabling Activities:**
 - Stockholm Convention – National Implementation plans (NIPs) and NIP Updates
 - Minamata Convention – Minamata Initial Assessments (MIAs) and National Action Plans (NAPs) for the artisanal and small scale gold mining sector (ASGM)



GLOBAL ENVIRONMENT FACILITY
INVESTING IN OUR PLANET

Focal Areas

5) International Waters Focal Area (GEF-7 \$463 million)

Transboundary (multi-national) water governance and management

■ Goals:

- Strengthen **Blue Economy** opportunities in shared coastal and large marine ecosystems
- Improve governance in the **Areas Beyond National Jurisdiction (ABNJ)**
- Enhance water security in shared **freshwater ecosystems** (surface and groundwater)



GLOBAL ENVIRONMENT FACILITY
INVESTING IN OUR PLANET

Impact Programs

- Sustainable Cities
- Food Systems, Land Use and Restoration (FOLUR)
- Sustainable Forest Management



GLOBAL ENVIRONMENT FACILITY
INVESTING IN OUR PLANET

Review of the Letter of Endorsement

GEFSec checks the following points:

- ✓ Date of the LoE
- ✓ Who is the current GEF OFP in the Country Profile (see GEF website)
- ✓ Project title between the LoE and the PIF
- ✓ Amounts of STAR and non-STAR resources and eventual incentives
- ✓ Name of the GEF Agency
- ✓ Copy to the concerned Convention Focal Points, if needed

10

M. Seydou Yayé, General Director of Planning
GEF-Niger Operational Focal Point

Tel.: +227 65 11 11 11
Environment and climate Division
International Fund for Agricultural Development
Via Paolo Di Dono 44
00142 Rome, Italy

Subject: Endorsement for Niger – Smallholder Agriculture Development Program

In my capacity as GEF Operational Focal Point for Niger, I confirm that the above Program proposal is (a) in accordance with my government's national priorities and our commitment to the relevant global environmental conventions; and (b) was discussed with relevant stakeholders, including the global environmental convention focal points.

I am pleased to endorse the preparation of the above Program proposal which will be implemented by the International Fund for Agricultural Development (IFAD). If approved, the proposal will be prepared and implemented by the Ministry of Agriculture in close collaboration with the JN high commission.

The total STAR financing being requested for this child project under the broader IFAD-led Food Security Integrated Approach Program (IAP) supported by Niger, is US\$4,400,000, inclusive of GEF financing for the child project, PPG that will finance the preparation of individual child project under the Program, and Agency fees for project cycle management services associated with the project under the Program. Moreover, I am requesting the GEF Secretariat to match these STAR funds with an additional amount of US\$ 4,000,000, inclusive of GEF Agency fees, from the Food Security IAP set-aside funds—utilizing the 1:1, STAR to IAP funds, matching rule. This brings the total envelope of this child project to US\$8,400,000. The funds requested for Niger are detailed in the table below.

Trust Fund	Agency	Focal Area	Programming of Funds	Amount (in US\$)		
				GEF Project Financing	Expected PPG	Agency Fee
GEFTF	IFAD	Land Degradation	IAP/Land Degradation	3,003,395	70,000	276,603
		Biodiversity	IAP/Biodiversity	458,716		41,284
		Climate Change	IAP/Climate Change	304,387		45,813
		Food Security	IAP/Food Security	3,669,724		350,276
Total Financing				7,436,422	70,000	493,976

With this, I consent to the utilization of Niger's allocation in GEF-6 as defined in the System for Transparent Allocation of Resources (STAR).

Sincerely,

Mr. YAYÉ SEYDOU
GEF Operational Focal Point
General Director of Planning
Ministry of Planning, Territorial
Management and Community
Development

NTCCC
Convention Focal Point for UNCCD



GLOBAL ENVIRONMENT FACILITY
INVESTING IN OUR PLANET

Role of the STAP

STAP reviews the scientific and technical rationale of GEF full-sized projects at PIF/concept stage when entering the work program (I.e. prior to GEF Council)



GLOBAL ENVIRONMENT FACILITY
INVESTING IN OUR PLANET

Principles for GEF Projects and Programs

STRATEGIC

- Country-driven
- Results and global environmental benefit (GEB) delivery <<*provide link to document defining GEBs for each GEF FA*>>
- Integration and synergy (Impact Program)
- Scale of impact
- Co-financing and leveraged investment
- Private sector engagement
- Address drivers in line with GEF 2020



GLOBAL ENVIRONMENT FACILITY
INVESTING IN OUR PLANET

Project Review Criteria

Is the project/program aligned with the relevant GEF focal area element as defined in the GEF-7 programming directions?

(On each of these project review slides, we would have one general statement as to what this question is seeking to answer, and/or a series of sub-questions to detail this topic more)



GLOBAL ENVIRONMENT FACILITY
INVESTING IN OUR PLANET

Project Review Criteria

Are the components of the project sound, appropriate, and sufficiently clear to achieve the project/program's objectives and deliver on the core indicators?

- Do the components support the project development objective and are aligned with the project theory of change? Is there a clear flow of logic on how the project components build on each other ?
- Is the complexity of project design aligned with what the project aims to achieve ?
- Are the activities realistic/achievable given the project funds, timeframe and country context?
- Does the project enhance national/regional institutional capacities with a view of maintaining project interventions past project



GLOBAL ENVIRONMENT FACILITY
INVESTING IN OUR PLANET

Project Review Criteria

Are the core indicators ambitious enough and in line with the resources requested, and are they calculated according to the methodology included in the guidelines?



GLOBAL ENVIRONMENT FACILITY
INVESTING IN OUR PLANET

Project Review Criteria

Has the project/program described the global environmental / adaptation problems, including the root causes and barriers that need to be addressed?



GLOBAL ENVIRONMENT FACILITY
INVESTING IN OUR PLANET

Project Review Criteria

Is the baseline scenario or any associated baseline projects appropriately described?

- Does country have something going already in this area?
- Is the baseline project financed without the need for GEF funding?
- If the topic is brand new, is the country making a substantial base investment?
- If the topic is policy and capacity building, is there demonstrated commitment to implement laws and regulations, and a strong country commitment to a sustainable effort?



GLOBAL ENVIRONMENT FACILITY
INVESTING IN OUR PLANET

Project Review Criteria

Does the proposed alternative scenario describe the expected outcomes and components of the project/program?



GLOBAL ENVIRONMENT FACILITY
INVESTING IN OUR PLANET

Project Review Criteria

Is the project/program aligned with focal area and/or Impact Program strategies?



GLOBAL ENVIRONMENT FACILITY
INVESTING IN OUR PLANET

Project Review Criteria

Is the incremental / additional costs reasoning properly described as per the guidelines?



GLOBAL ENVIRONMENT FACILITY
INVESTING IN OUR PLANET

Project Review Criteria

Are the project's/program's indicative targeted contributions to global environmental benefits reasonable and achievable?



GLOBAL ENVIRONMENT FACILITY
INVESTING IN OUR PLANET

Project Review Criteria

Is there potential for innovation, sustainability,
and scaling up in this project?



GLOBAL ENVIRONMENT FACILITY
INVESTING IN OUR PLANET

Project Review Criteria

Is the case made for private sector engagement consistent with the proposed approach?



GLOBAL ENVIRONMENT FACILITY
INVESTING IN OUR PLANET

Project Review Criteria

Does the project/program consider potential major risks including the consequences of climate change and resilience?

- Is a risk matrix included listing and ranking major risks and identifying actions to address them ?
- Are climate risks identified [<provide link to STAP guidance>](#) and does the project design address them?
- If working in FCV context have specific political/governance risks and challenges been identified and translated into the project design?
-



GLOBAL ENVIRONMENT FACILITY
INVESTING IN OUR PLANET

Project Review Criteria

Is the institutional arrangement for project/program coordination outlined and does it conform to the guidelines?

- Are the anticipated executing entities provided (at PIF stage these are indicative)?
- Is there any indication of conflicts of interest/overlapping implementing and executing roles of the GEF agency implied (which is against GEF policies and would require case-by-case exceptional approval by GEF senior management)?
- Does the project describe how it will be properly/effectively coordinating with ongoing related initiatives (indicative at PIF stage) ?
- ...



GLOBAL ENVIRONMENT FACILITY
INVESTING IN OUR PLANET

Project Review Criteria

Is the project/program aligned with national priorities and plans or reports and assessments under relevant conventions?



GLOBAL ENVIRONMENT FACILITY
INVESTING IN OUR PLANET

Project Review Criteria

Key issues to consider in project development for consideration at CEO endorsement

- Detailed core indicator target calculation
- Comprehensive risk assessment and also attach safeguards docs
- Confirm the co-financing
- Results framework, monitoring and assessment (baseline, indicators, methods)
- Detailed implementation and execution arrangements: incl. funds flow, contract arrangements of project staff and reporting lines. Clear separation of implementing and executing roles.
- Include KM and communication & dissemination within components (incl budget)
- Stakeholder engagement plan
- Gender analysis and action plan



GLOBAL ENVIRONMENT FACILITY
INVESTING IN OUR PLANET

Key take home messages for OFPs from this presentation

Summarize here the most important take home points.



GLOBAL ENVIRONMENT FACILITY
INVESTING IN OUR PLANET