



Independent
Evaluation Office
GLOBAL ENVIRONMENT FACILITY

Expanded Constituency Workshop

Session of the Independent Evaluation Office, GEF

2017



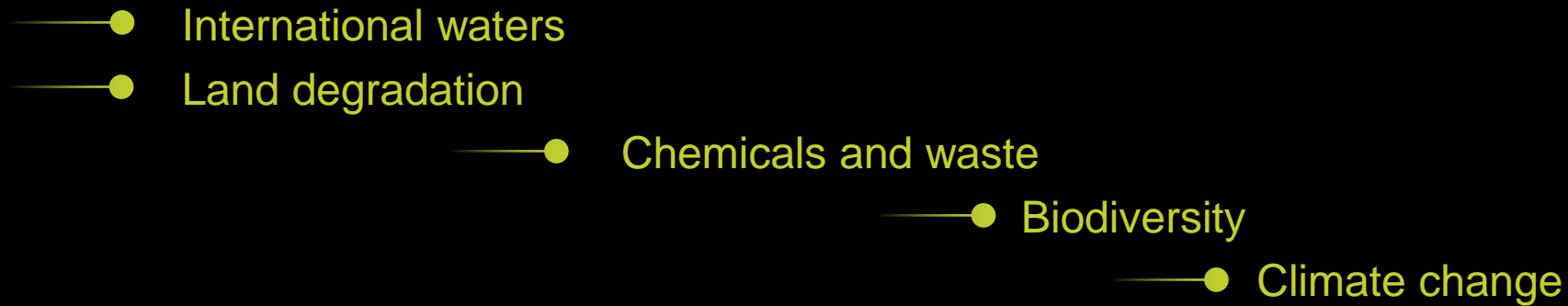
Independent
Evaluation Office
GLOBAL ENVIRONMENT FACILITY



6th Comprehensive Evaluation (OPS6)

October November December January February March April May June July

Focal Area Studies

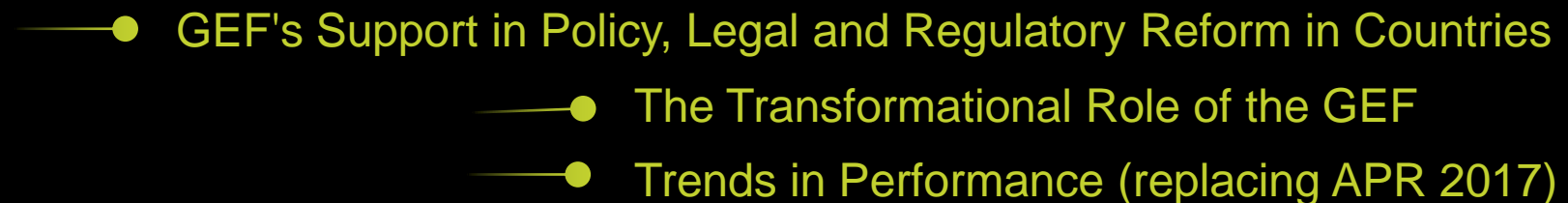


Mainstreaming / Cross cutting

< CSO Network (June)



Impacts



Institutional Issues

- Reform Process – Results Based Management
 - Reform Process – Knowledge Management
 - GEF6 Strategy, Global Relevance
 - Governance, Financing, Health of the Partnership

Thematic Evaluations

- Programmatic approaches
- Multiple Benefits of GEF support
 - Integrated approaches

OPS6

- Early findings

Full report >
(September)



Independent
Evaluation Office
GLOBAL ENVIRONMENT FACILITY

Completed Evaluations

Institutional Issues

➤ GEF Civil Society Network Evaluation

- Conclusion 1: Network remains relevant and is delivering results
 - Conclusion 2: Network is distant from the country level. As such, the Network is compromised in its ability to bring forward country perspectives
 - Conclusion 3: The CSO Network is operating in an expanding GEF Partnership without a shared contemporary vision of its role
 - Conclusion 4: Within an increasingly complex operating environment, the Network has strengthened organizationally but governance challenges remain
-
- Other evaluations underway: Knowledge Management Study; GEF Engagement with the Private Sector; Results Based Management in the GEF

Strategic Relevance of the GEF

➤ **Evaluation of the Programmatic Approaches in the GEF**

- Conclusion 1: GEF programmatic approaches have promoted projects that are better designed to produce broader and more sustainable results than stand-alone ones.
 - Conclusion 2: : The multidimensional nature of programs has generated greater need for coordination and management, with implications for efficiency, results and performance.
 - Conclusion 3: Alignment of program support with country priorities has generated strong program ownership.
 - Conclusion 4: Program design has improved, but M&E systems have not adapted to measure and demonstrate program level results and additionality.
 - Conclusion 5: Decision making on program design needs to reflect greater transparency and clear roles for all players in the partnership.
-
- Other evaluations underway: Evaluation of Multiple Benefits of GEF Support; Integrated Approach Pilot Programs on Commodities, Food Security and Sustainable Cities.

Results & Impact

➤ **Impact of GEF Support on National Environmental Laws and Policies in Selected Countries**

➤ GEF: Important role in supporting policy and legal reform

- Regulatory reforms take time: potential for mismatch between project duration and legislative and/or rule-making process needs to be considered
 - Rule-making is inherently political process involving constituents with often competing and/or different interests
 - There is much that can be done under existing statutes either through policies or administrative actions
 - In some countries, the necessary institutional machinery and authority for enforcement also need strengthening
 - Turnover within ministries can impact the continuity of the rule-making process
-
- ### ➤ Other evaluations underway: Project-level Accomplishments Study

Performance of the Focal Areas

➤ International Waters Focal Area Study

➤ Contributions:

- Rehabilitation of the Black Sea Northwest Shelf dead zone
- Support the process leading to the Stockholm and Minamata Conventions
- Adoption of the Ballast Water Convention on Alien Species, the Pacific Tuna Treaty, the Guarani Aquifer Agreement
- Lack of Agency participation in strategy definition

➤ Areas of Concern:

- Decline of the funding envelope
- Dominance of marine and ocean investments
- No funding for project or program preparation
- Lack of Agency participation in strategy definition

➤ Other evaluations underway: Biodiversity Focal Area Study, Climate Change Focal Area Study





Independent
Evaluation Office
GLOBAL ENVIRONMENT FACILITY

Thank you!

For more information, visit www.gefieo.org