



sdfsdf

GEF Constituency Meeting

Baku, Azerbaijan | April 2019

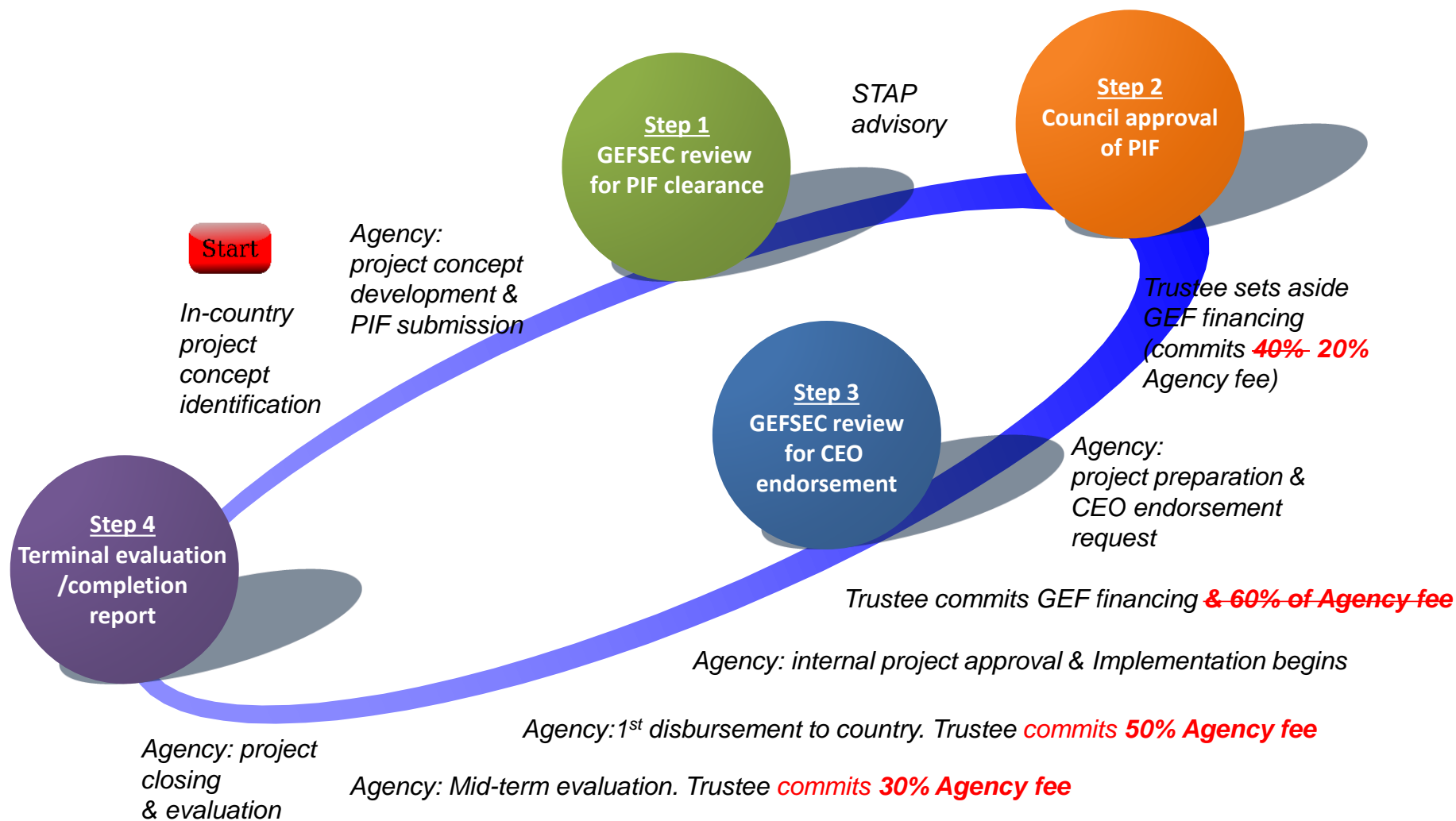
GEF Project Modalities

- **Full-Sized Project (FSP):** over US\$2M
Approval authority: **Council** (meets twice a year in person & intersessional by mail)
- **Medium-Sized Project (MSP):** US\$2M or less
Approval authority: **GEF CEO** (on a rolling basis)
- **Program:** a longer term and strategic arrangement of individual yet interlinked projects that aim at achieving large-scale impacts on the global environment
Child Project: an individual project under Program



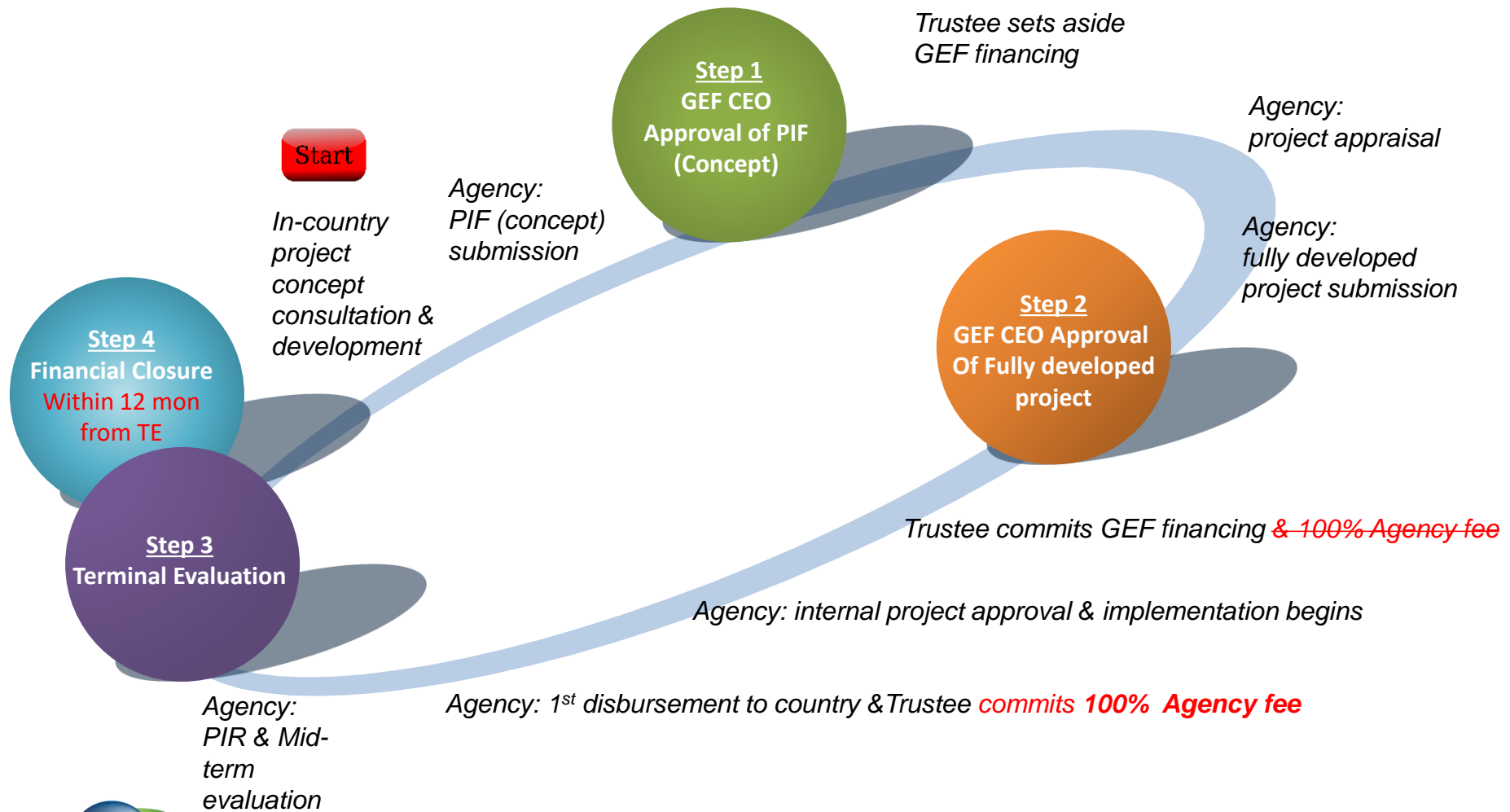
GLOBAL ENVIRONMENT FACILITY
INVESTING IN OUR PLANET

Full-Sized Project Cycle



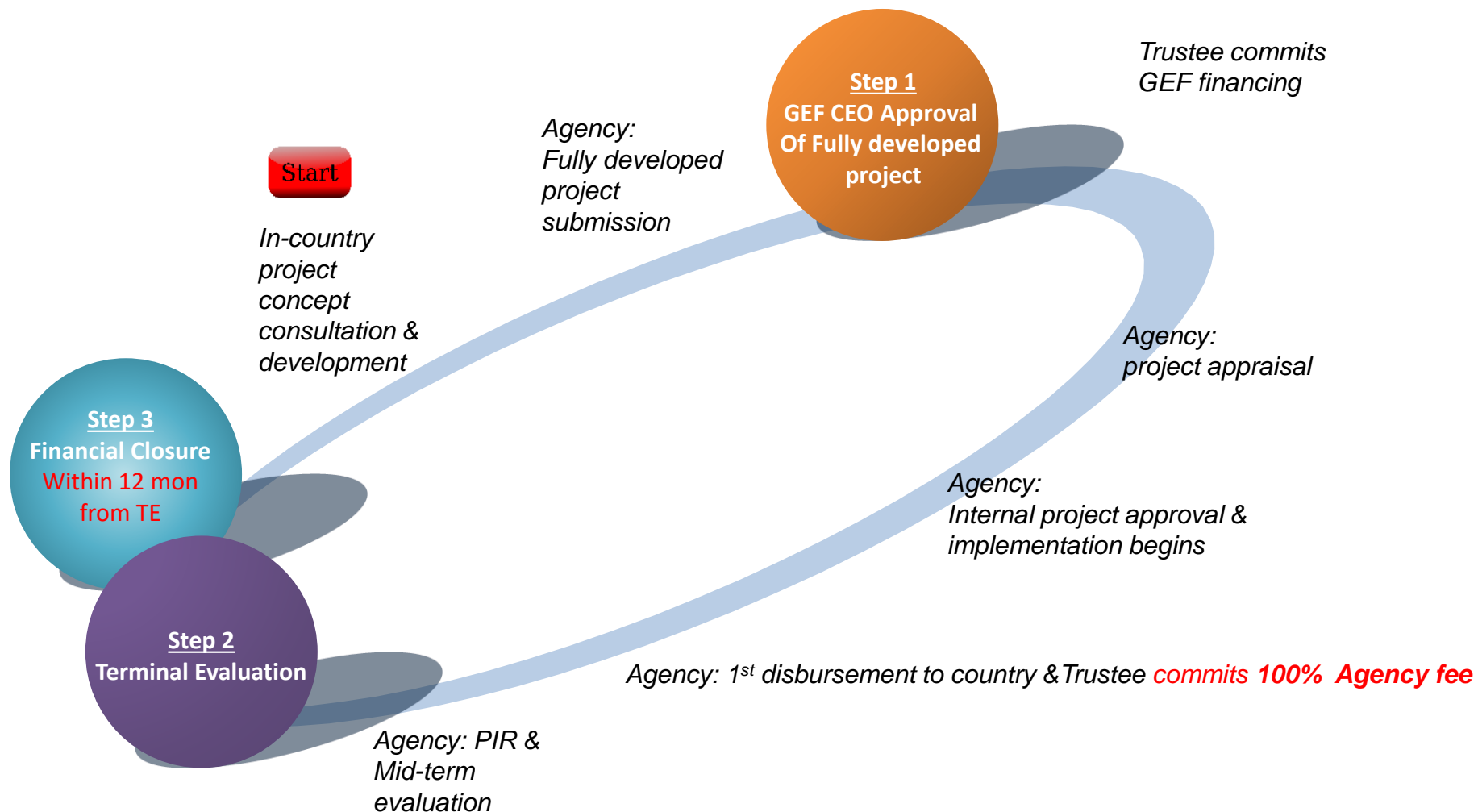
GLOBAL ENVIRONMENT FACILITY
INVESTING IN OUR PLANET

Medium-Sized Project (2 step approval)



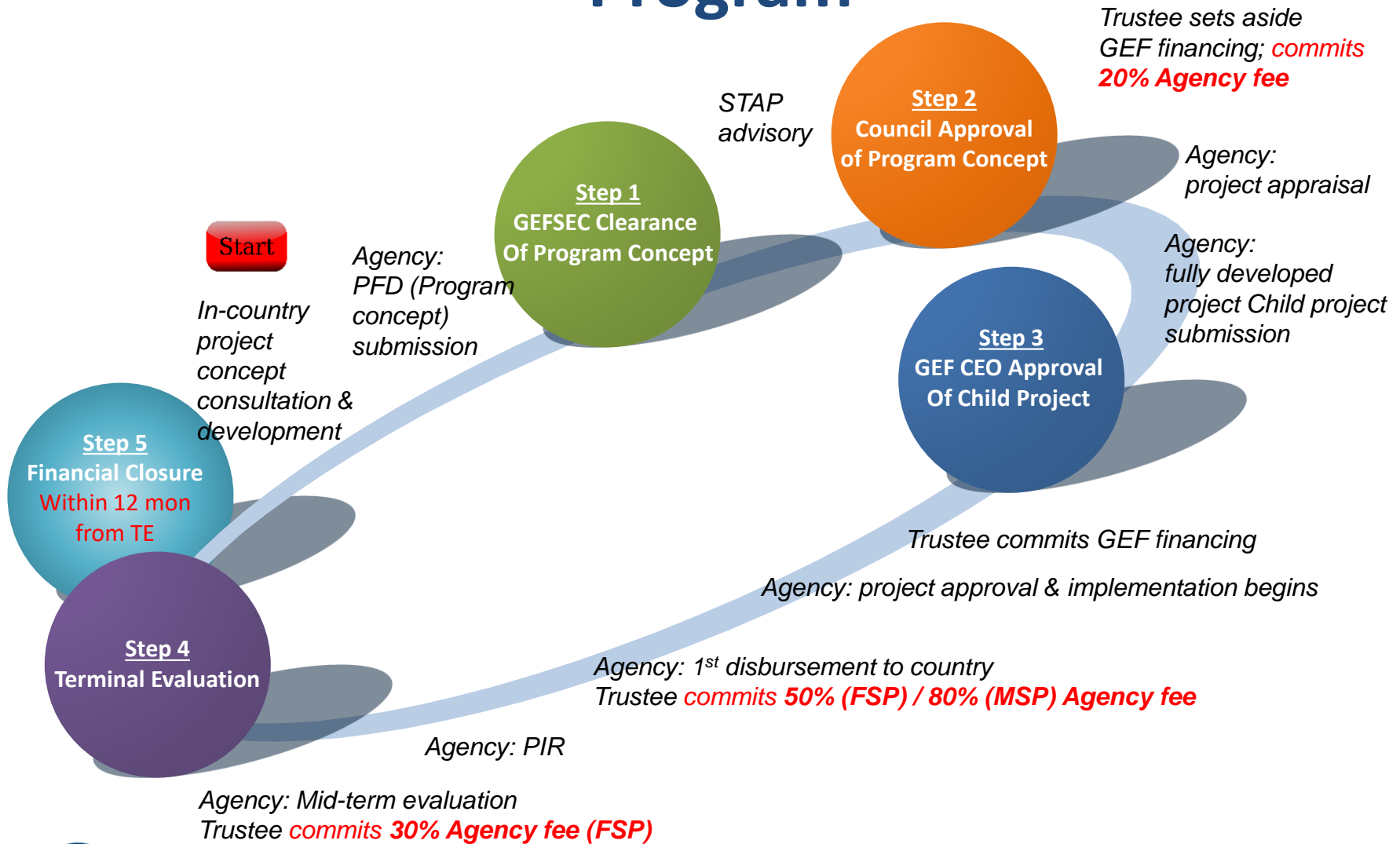
GLOBAL ENVIRONMENT FACILITY
INVESTING IN OUR PLANET

Medium-Sized Project (1 step)



GLOBAL ENVIRONMENT FACILITY
INVESTING IN OUR PLANET

Program



GLOBAL ENVIRONMENT FACILITY
INVESTING IN OUR PLANET

GEF-7 policies focus

The **Policy Recommendations for GEF-7** are aimed at enhancing the effectiveness and efficiency in the following areas:

- resource allocation
- optimizing the use of GEF resources in different countries
- Results
- Partnership
- Governance
- private sector engagement
- operational efficiency and transparency (fees & cancellation)
- improved management of data and information
- gender equality
- knowledge management, and
- responsible investment strategy
- [Practical Steps to Improve Coordination and Workflow in the GEF Partnership](#)



GLOBAL ENVIRONMENT FACILITY
INVESTING IN OUR PLANET

Key GEF-7 Policies

Project identification	Concept submission (PIF/PFD)	Fully developed project (CEO approval/endorsement)	Implementation (PIF, MTR, TR)
Gender Equality Policy 53 rd Council Meeting, https://www.thegef.org/council-meeting-documents/policy-gender-equality			
Meaningful consultations w/ stakeholders on the proposed project/program, early screening	Indicative info on gender considerations & any measures to address these, including process to collect sex-disaggregated data & gender info	(a) Gender analysis or equivalent socio-economic assessment that identifies and describes any gender differences, gender differentiated impacts & risks, and opportunities to address gender gaps and promote the empowerment of women, as relevant to the proposed activity (b) Any corresponding gender-responsive measures to address differences, identified impacts & risks, and opportunities through a gender action plan or equivalent (c) If gender-responsive measures have been identified, results framework or logical framework with actions, gender-sensitive indicators & sex-disaggregated targets	Annual reporting on, including through PIRs, mid-term reviews, and terminal evaluations on progress and results



GLOBAL ENVIRONMENT FACILITY
 INVESTING IN OUR PLANET

Project identification	Concept submission (PIF/PFD)	Fully developed project (CEO approval/endorsement)	Implementation (PIF, MTR, TR)
------------------------	------------------------------	--	-------------------------------

Stakeholder Engagement Policy

<https://www.thegef.org/council-meeting-documents/policy-stakeholder-engagement> (53rd CM)

Meaningful consultations w/ stakeholders on the proposed project/program, early screening	Indicative info on stakeholder engagement, including any consultations conducted during project development, as well as information on how Stakeholders will be engaged in the project/ program, and means of engagement	Stakeholder engagement plans or equivalent, with stakeholders who have been and will be engaged, means of engagement, dissemination of information, roles and responsibilities, resource requirements, and timing throughout the project cycle	Annual reporting on, including through PIRs, mid-term reviews, and terminal evaluations on progress, challenges and outcomes
---	--	--	--

Updated Policy on Environment & Social Safeguards (55th CM)

<https://www.thegef.org/documents/environmental-and-social-safeguard-standards>

Meaningful consultations w/ stakeholders on the proposed project/program, early screening	Indicative info on any environmental and social risks and potential impacts associated with the proposed project/ program; and any measures to address these	Additional information on relevant risks and impacts, and measures to address these, including any assessments carried out, and any environmental and social management plans or the equivalent	Reporting at mid-term and completion on the implementation of relevant environmental and social management measures
---	--	---	---

Co-financing Policy

<http://www.thegef.org/council-meeting-documents/updated-co-financing-policy> (54th CM)

	Indicative information on the expected amounts, sources and types of co-financing, and the sub-set of such co-financing that meets the definition of "investment mobilized"	Confirmed information on the expected amounts, sources and types of co-financing and "investment mobilized", with supporting evidence	Reporting at mid-term and completion on actual amounts, sources and types of co-financing and investment mobilized
--	---	---	--

Co-Financing Policy

- Co-Financing: financing that is additional to GEF financing (excludes recurrent expenditures)
- Overall GEF portfolio: at least **7:1**
- Upper-Middle Income Countries and High-Income Countries -- that are not Small Island Developing States or Least Developed Countries -- at least **5:1**



GLOBAL ENVIRONMENT FACILITY
INVESTING IN OUR PLANET

Highlights of the 55th Council



GLOBAL ENVIRONMENT FACILITY
INVESTING IN OUR PLANET

Policy Measures to Enhance Operational Efficiency, Accountability and Transparency

- Cancellation policy
- Portal to be available by July 2019

Harmonizing the Rules and Requirements for all Agencies

- 30% ceiling on the GEF's share of Agencies' portfolios
- Working Group

Non-Grant Instrument Program

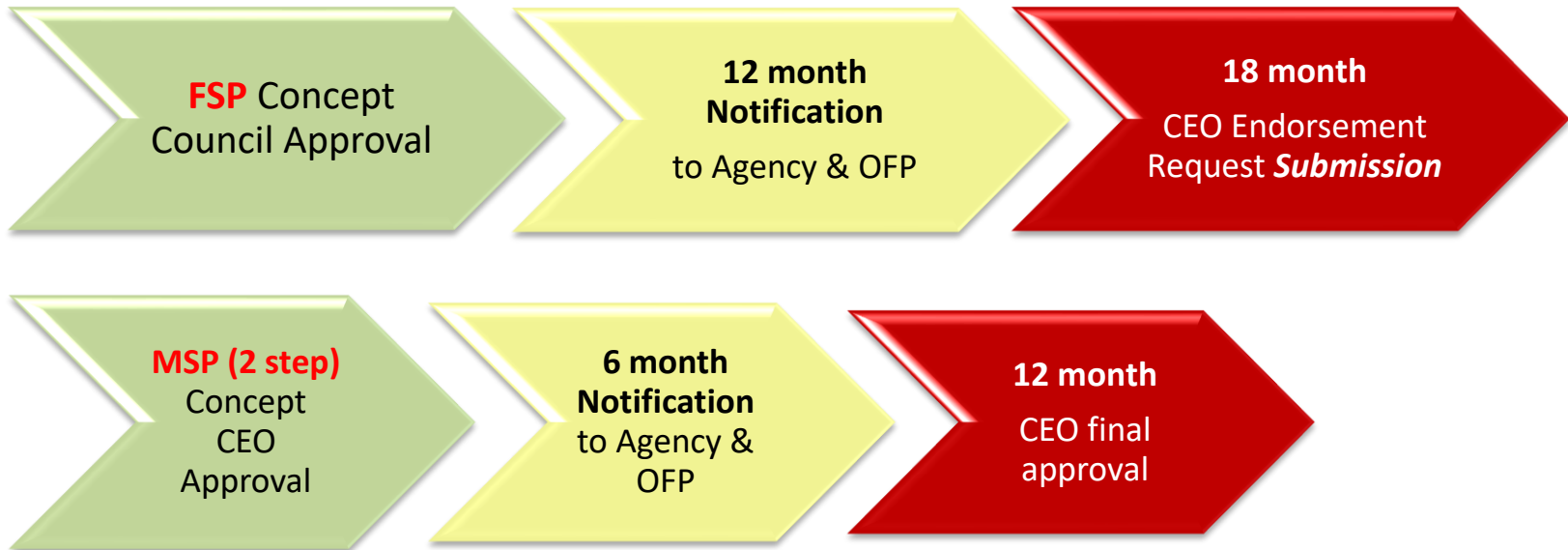
- Advisory Group and a new Senior Private Finance Specialist



GLOBAL ENVIRONMENT FACILITY
INVESTING IN OUR PLANET

Old Cancellation Policy

Before 55th Council



- **Program:** Each program has own commitment deadline (not subject to the above cancellation timeline)
i.e., GEF-6 IAP commitment deadline: 12 mon from the Council approval on program concept



GLOBAL ENVIRONMENT FACILITY
INVESTING IN OUR PLANET

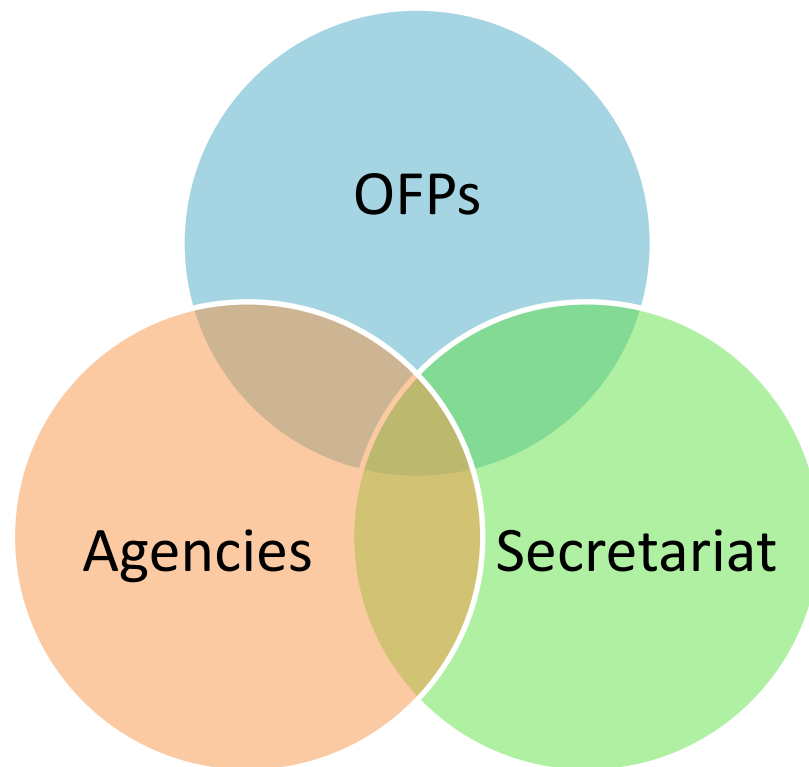
New Cancellation Policy

As of 55th Council



GLOBAL ENVIRONMENT FACILITY
INVESTING IN OUR PLANET

Practical steps to improve coordination and workflow in the GEF partnership



GEF Information [document](#) GEF/C.55/Inf.09 as of November 28, 2018



GLOBAL ENVIRONMENT FACILITY
INVESTING IN OUR PLANET

Practical steps to improve coordination:

Roles of OFPs, abbreviated

GENERAL RESPONSIBILITIES

- main contact of the GEF Secretariat, Agencies and national stakeholders
- Convene a broad range of stakeholders
- Consult with CSO and other key stakeholders + provide information, including project implementation, results and impacts
- Establish, if appropriate, and convene NSCs
- Raise awareness in country on GEF
- Support mainstreaming of GEF objectives
- Participate in all stages throughout the project cycle
- Serve as a reference on GEF issues for all stakeholders

ENGAGEMENT IN CSP - ECW, CMs and ND

OPERATIONAL RESPONSIBILITIES

- Work and coordinate with line ministries and stakeholders in choosing projects and programs, as well as the GEF Implem. Agency for each project
- Work with the Agencies in the preparation of the PIF to, and take a decision on endorsing projects before the Agencies submit PIF to GEFSec
- Help Agencies respond to GEFSec comments
- Use the GEF Portal to track GEF projects and programs + track in more detail through Agency systems
- Be fully informed by Agencies and the GEF Secretariat on projects, their development and execution.
- Collaborate on M&E
- Help ensure GEF visibility policy is respected



GLOBAL ENVIRONMENT FACILITY
INVESTING IN OUR PLANET

Selected policies for the 56th Council, **in draft**



GLOBAL ENVIRONMENT FACILITY
INVESTING IN OUR PLANET

INFORMING COUNCIL ON POSSIBLE NON-COMPLIANCE RAISING REPUTATIONAL RISK TO GEF: BACKGROUND AND PROPOSED PROCEDURE (DRAFT)

- builds on reporting systems already in place within the partnership
- takes into account needs for confidentiality

Sections:

- Agency Systems to Address Potential Policy Non-Compliance
- Agency Procedures for Sharing Information – Potential Non-Compliance Cases
- Procedure to Enhance Regular under Existing Policy
- Annex: Proposed Procedure to Inform Council of Cases that May Raise Reputational Risks for GEF



GLOBAL ENVIRONMENT FACILITY
INVESTING IN OUR PLANET

GEF POLICY ON MONITORING: DRAFT FOR CONSULTATION

Supersedes relevant provisions of the 2010 Monitoring and Evaluation Policy

The principal, proposed changes from current policy include:

- Reflecting the reporting requirements approved by the Council in June 2018 as part of the results architecture for the seventh replenishment period (GEF-7)
- Alignment with the principles and requirements related to project, program, and portfolio monitoring and reporting set out in other, more recent policies and guidelines
- Clarified reporting requirements for programs and the Small Grants Programme



GLOBAL ENVIRONMENT FACILITY
INVESTING IN OUR PLANET

GEF EVALUATION POLICY: DRAFT FOR CONSULTATION

Supersedes relevant provisions of the 2010 Monitoring and Evaluation Policy

The principal, proposed changes from current policy include:

- evaluation in the GEF should apply a gender-responsive approach
- should report on the GEF's additionality using the evaluative approach by the IEO
- program evaluation should measure and demonstrate program additionality over the same level of investment made through comparable alternatives
- assessment of the coherence between program and child project theories of change, indicators, and expected/achieved results
- Clarifying evaluation responsibilities for jointly implemented projects and programs
- Introducing in all those sections of the Policy (and the relevant minimum requirements) in which indicators are discussed a reference to (1) collecting data on social and economic co-benefits, (2) sex-disaggregated and gender sensitive data, and (3) collecting the geographic coordinates of project sites



GLOBAL ENVIRONMENT FACILITY
INVESTING IN OUR PLANET

Impact Programs

1. Food Systems, Land Use and Restoration (FOLUR)

- 2nd Call for Expression of Interests

2. Sustainable Cities

- Leading Agency selection
- No more applications

3. Sustainable Forest Management

- No more applications; fully committed



GLOBAL ENVIRONMENT FACILITY
INVESTING IN OUR PLANET



Contact:

Olha Krushelnytska
okrushelnytska@thegef.org