



# GEF Partnership

1. Adaptation Fund
2. GEF Trustee and its Financial Operations
3. Scientific and Technical Advisory Panel (STAP)
4. GEF Independent Evaluation Office (IEO)
5. Relations with Conventions

GEF Introduction Seminar 2021 | Day 4, February 25

# Adaptation Fund Overview



ADAPTATION FUND

# **The Adaptation Fund is hosted by the GEF**

---

- **AF Board:** consists of representatives of UN constituencies
  - Has legal capacity in Germany
  - Meets regularly in Germany (Bonn); virtually during pandemic
- **AF Secretariat:** hosted by GEF on an interim basis
  - Functionally independent secretariat: Team of ca. 15 dedicated full-time staff
  - Decision by CMP 15 to reaffirm MOU, approval by GEF Council in December 2019
- **AF Trustee:** the World Bank on an interim basis
  - open-ended arrangement since CMP 15 (2019)

# Adaptation Fund



**Finances concrete adaptation projects/programmes; pioneered Direct Access**



**A total of 54 IEs (33 NIEs, 14 MIEs, 7 RIEs) implementing 115 projects on the ground to date**



**Created in 2001, launched in 2007; serves Kyoto Protocol, and formally serves the Paris Agreement since Jan 2019**



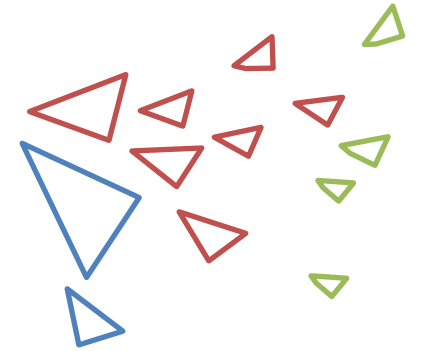
ADAPTATION FUND



## Concrete results

Adaptation in action

## Tangible results



**9.4 million** direct beneficiaries

**18.2 million** indirect beneficiaries

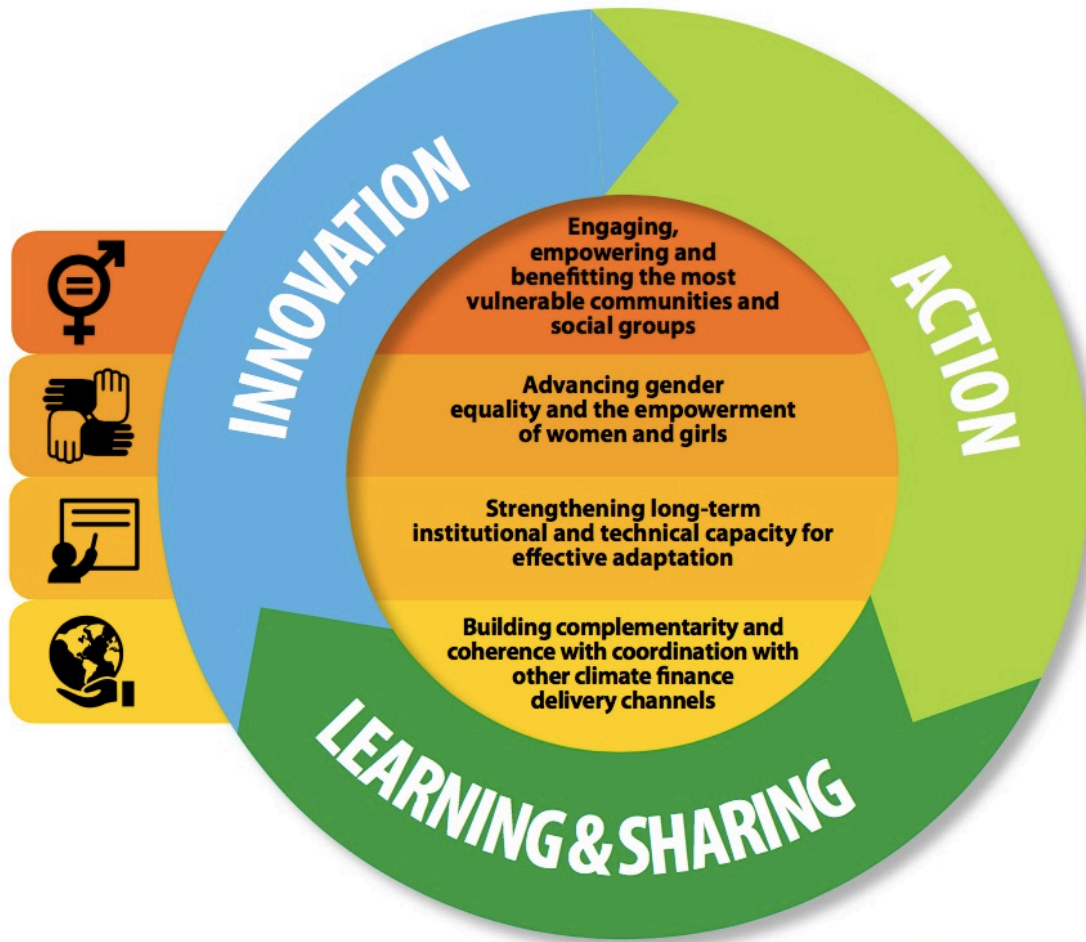
**407,232 ha** protected/restored  
natural habitats

**161,775 meters** protected  
coastlines

**409** Early Warning Systems



ADAPTATION FUND



## Three pillars dedicated to:

### ➤ Action

- ❑ Window for “enhanced direct access”: US\$20 M per year (>10 grants)
- ❑ Scale-up microgrants: US\$200,000 per year (10 grants). **One grant approved in October 2019**

### ➤ Innovation

- ❑ Large grants (<US\$5 M) for rolling out, scaling up innovation; to be launched in 1<sup>st</sup> quarter of 2021
- ❑ NIE Micro-grants (<US\$250 k) for encouraging new innovation, creating evidence base. **Four grants approved since 2019**
- ❑ Small grants (<US\$250 k) available through UNDP & UNEP-CTCN to non-accredited entities; **recently launched**

### ➤ Learning & Sharing

- ❑ South-South learning microgrants (<US\$150 K) for sharing practices, lessons (ca. 15 grants). **One grant approved in October 2020**

Adaptation in action



ADAPTATION FUND





## Additional capacity-building tools & programs

Readiness support and other innovative approaches

### Readiness support for Direct Access entities

- ❑ Launched in May 2014; approval of 45 readiness projects totaling US\$ 1.6 million to date
- ❑ South-South Cooperation Grants; Project Formulation Assistance Grants; Technical Assistance Grants
- ❑ Community of practice for Direct Access Entities (CPDAE)

### Streamlined accreditation process

- ❑ Since April 2015: Fit-for-purpose for smaller entities

### Enhanced direct access (EDA)

- ❑ Pioneering use of devolved control over project approval processes to national institutions, enables local actors to define and implement activities via small grants
- ❑ Dedicated window approved by Board in October 2020

### Environmental and Social Policy (2013) & Gender Policy (2016)

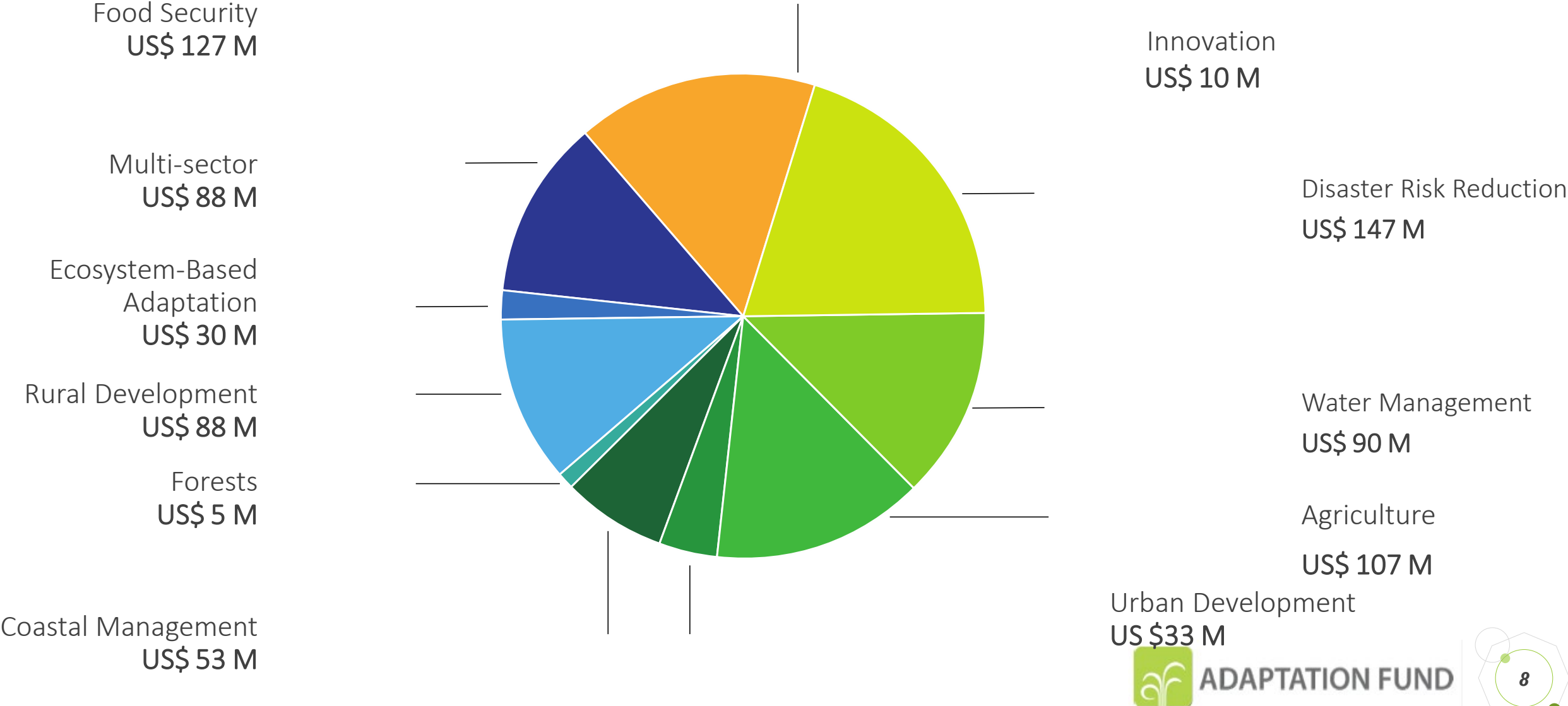
- ❑ Accreditation stage: Systems to assess, mitigate and manage environmental and social risk and commitment to gender equality
- ❑ Project proposal stage: Screening against 15 environmental and social principles



ADAPTATION FUND



# Concrete AF projects tailored to local adaptation needs and driven by country ownership



# US\$ 783 Million Committed to Date



**Latin America &  
Caribbean**  
\$216 M



**Eastern Europe**  
\$30 M



**Global**  
US\$ 10 M

**Asia Pacific**  
\$208 M



**Africa**  
\$319 M



## KNOWLEDGE MANAGEMENT

- **Studies & pubs:** *Assessing Progress: Integrating Gender in AF Projects & Programmes; Local leadership in Adaptation Finance; Readiness & Capacity-Building in Direct Access Finance; Bridging Gaps in Accreditation; Lessons Learned & Approaches from PMMs*
- **E-learning courses:** “Unlock Adaptation Finance”, in ENG, SPAN & FRE; training courses for small MTS grants

## VIRTUAL MISSIONS

- **AF projects adapted** to build broader resilience during COVID19; Secretariat provided project flexibility, virtual Board meetings & virtual country visits since early on

## RESOURCE MOBILIZATION

- **Board raised targets** for 2020-21 by 30% to meet continued record demand and \$280M pipeline
- **US\$ 116 million raised** in 2020; growing donor base

# Knowledge Management and Resource Mobilization

# Collaboration between Climate Funds

- AF projects that have been built on earlier GEF project experiences (Antigua & Barbuda, Turkmenistan)
- AF-GEF Synergies of implementing complementary projects (Honduras, Samoa, Tanzania)
- AF-GEF Sharing knowledge and good practices (knowledge management, gender, project review, hiring)
- Climate funds dialogue and cooperation framework (AF, GEF, GCF, CIF)
  - - Sharing results & reporting systems through collaboration platform
  - - Enhancing complementarity and coherence through joint programming
  - - Cooperating to build capacity among communities of practice, and scaling up effective projects
  - - Sharing experiences of COVID-19 responses, successes and lessons
  - - Enhancing practices through knowledge management
- **AF pilots scalable/replicable** projects that have been scaled up by other funds in several instances (nearly 10 scaled up by GCF and others)



# Thank You



ADAPTATION FUND

Cristina Dengel, Matthew Pueschel 

[cdengel@adaptation-fund.org](mailto:cdengel@adaptation-fund.org)

[mpueschel@adaptation-fund.org](mailto:mpueschel@adaptation-fund.org)



[www.adaptation-fund.org](http://www.adaptation-fund.org)



**GEF Trustee and its**

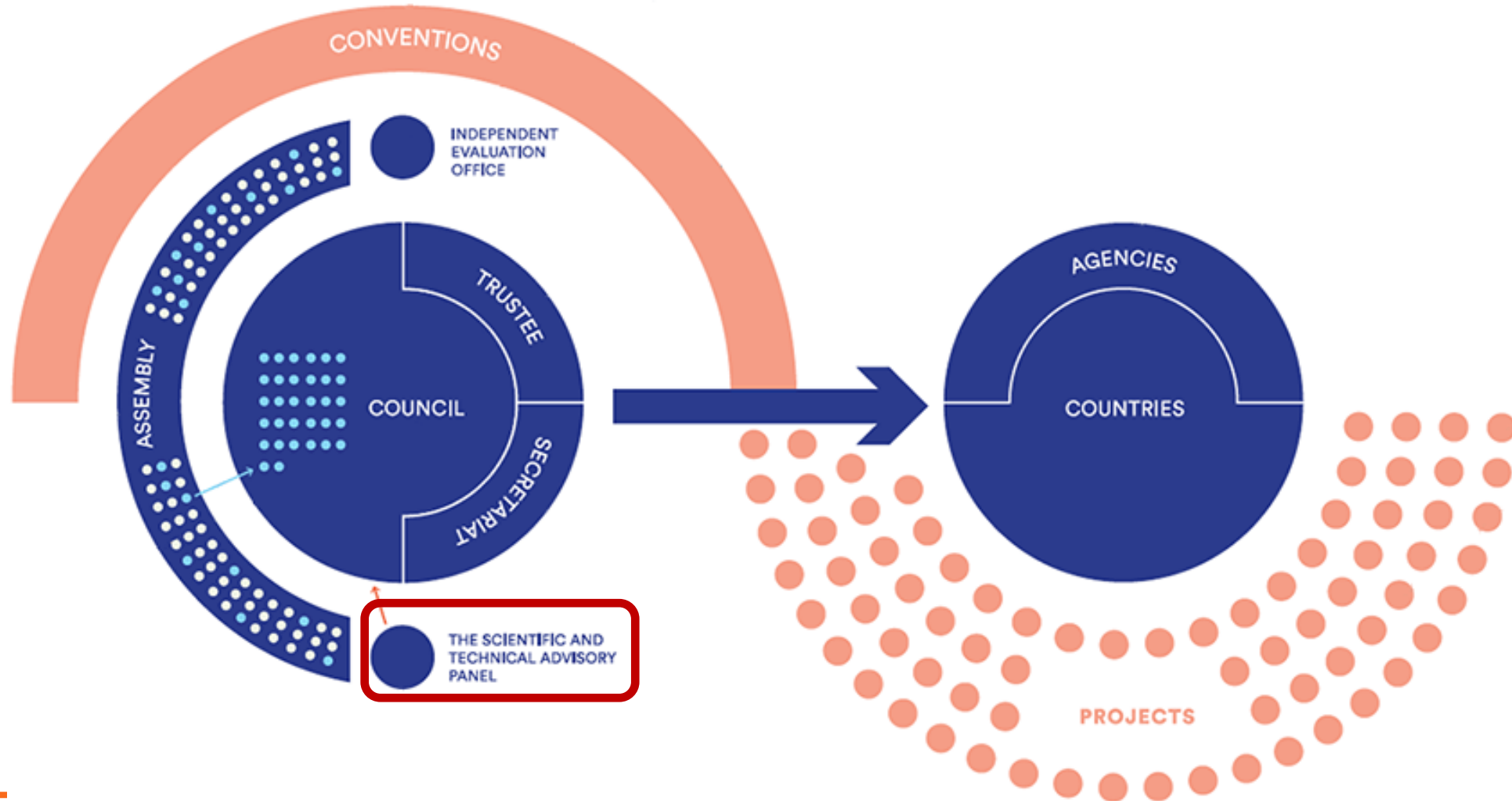
**Financial Operations**

# Scientific and Technical Advisory Panel to the Global Environment Facility

**Tom Lovejoy, STAP Special Advisor**  
**Virginia Gorsevski, STAP Secretariat**



# STAP in the GEF Partnership



# STAP in the GEF Partnership

**STAP provides independent scientific and technical advice to the GEF on its policies, strategies, programs, and projects.**

**Help to bridge the science-policy interface in topics related to GEF work areas**

- Strategic scientific and technical advice (i.e. recent TAG meetings)
- Scan the horizon for emerging global environment issues
- Interact with other relevant scientific and technical bodies and experts

**Provides operational & quality control advice on programs/projects**

- Develop guidance for use in the implementation of GEF projects and programs
- Screen GEF projects for scientific and technical quality



# Who is STAP and how does STAP work?

---

The STAP consists of a Chair, six Panel Members, and two advisors - all supported by a Secretariat.

Execute a program of work developed in collaboration with the GEF – guidance or information documents, for example.

Screen GEF projects for each GEF Work Program (2 times/year).

The Chair submits a report and makes a presentation at each GEF Council meeting.

# Recent STAP Advice (2020)

Delivering multiple benefits through the sound management of Chemicals and Waste

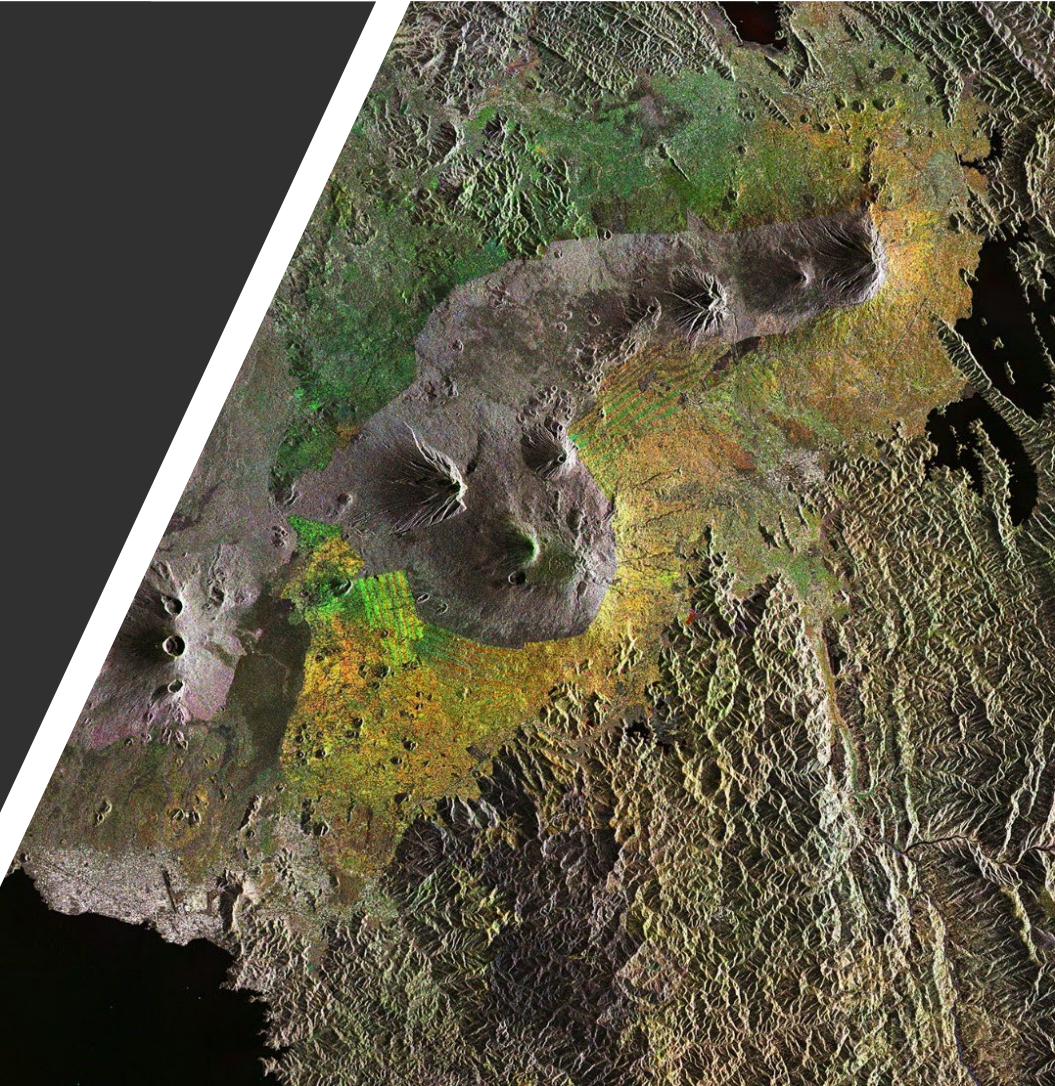
Why behavior change matters to the GEF and what to do about it

Nature-based Solutions and the GEF

Technology Critical Elements (TCEs)

Multi-stakeholder dialogue for transformational change

STAP's initial perspectives on GEF-8





## Ongoing and Possible Future Activities

- Biodiversity Mainstreaming
- Behavior Change
- Blue Economy
- Circular Economy
- Resilience



# STAP's Initial Perspectives on GEF-8

---

- Ensure that its investments are efficient, transformative and durable in producing GEBs;
- Ensure that the overall portfolio is more integrated and coherently transformational;
- Contribute to the transformation of global economic systems, using its convening power and leverage to form partnerships to deliver more environmentally sustainable development.

# Specific recommendations at different scales

---

## Project scale

- Clear and rational theory of change.
- Take into account risks from climate change and other uncertainties.
- Pay close attention to multi-stakeholder processes.
- Ensure durability of GEBs
- Strengthen gender-responsive interventions and create opportunities for youth.

## Portfolio level

- Employ a toolbox of diverse integrated approaches (i.e. NbS, LDN).
- Make better use of Earth Observation and geospatial technologies.
- Codify MEL and develop common metrics to assess progress.
- Enhance South-South knowledge exchange and TEK.

# Operational & quality control of GEF programs/projects



STAP screens GEF Full-Sized Projects (FSP) (more than US\$2 million) and Programs using a set of criteria aligned with the GEF Project Identification Form (PIF)

## Three possible outcomes

- Concur
- Minor revision
- Major revision

<https://www.thegef.org/work-programs>

A		B	C
		STAP Screening Template	
1			
2	Part I: Project Information		Response
3	GEF ID		
4	Project Title		
5	Date of Screening		
6	STAP member Screener		
7	STAP secretariat screener		
8	STAP Overall Assessment		
9			
10	Part I: Project Information		
11	B. Indicative Project Description Summary	STAP recommends that the proposers consider implementing major improvements in the following items: theory of change and contingency plan, innovation, risk assessment and management, knowledge management.	
12	Project Objective	Is the objective clearly defined, and consistently related to the problem diagnosis?	
13	Project components	A brief description of the planned activities. Do these support the project's objectives?	
14	Outcomes	A description of the expected short-term and medium-term effects of an intervention.	
15		Do the planned outcomes encompass important global environmental benefits/adaptation benefits?	
16		Are the global environmental benefits/adaptation benefits likely to be generated?	
17	Outputs	A description of the products and services which are expected to result from the project. Is the sum of the outputs likely to contribute to the outcomes?	
18	Part II: Project justification	A simple narrative explaining the project's logic, i.e. a theory of change.	
19	1. Project description. Briefly describe:		
20	1) the global environmental and/or adaptation problems, root causes and barriers that need to be addressed (systems description)	Is the problem statement well-defined?	
21		Are the barriers and threats well described, and substantiated by data and references?	

# Thank you

---

Please visit our website for more information

[www.stapgef.org](http://www.stapgef.org)





Independent  
Evaluation Office  
GLOBAL ENVIRONMENT FACILITY

# INDEPENDENT EVALUATION OFFICE



# OVERVIEW

---

1. Evaluation in the GEF
2. Independent Evaluation Office (IEO)
3. Evaluation Policy
4. Terminal Evaluation Guidelines

# Monitoring

**Is our activity on track?**

**Monitoring uses systematic collection of data to keep activities on track.**

## **Forms of monitoring:**

**Monitoring of environmental conditions and stressors**

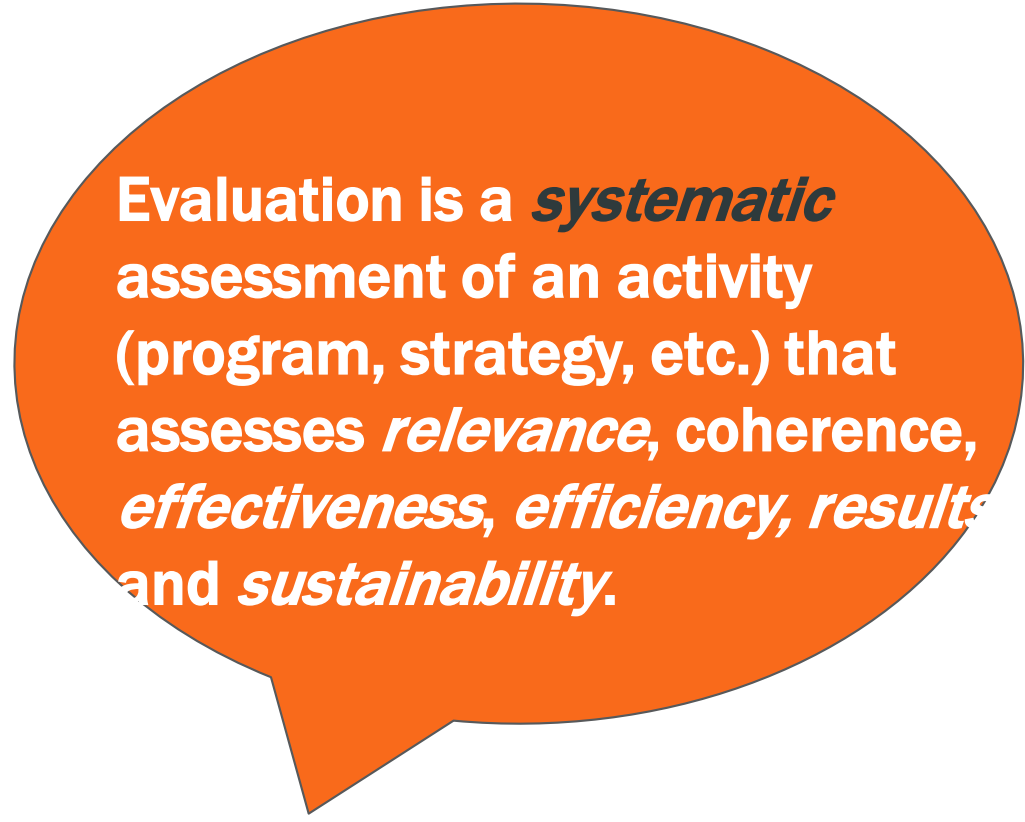
**Monitoring of progress toward project/program outcomes**

**Monitoring of project/program performance**

# Evaluation



Are we doing the right thing?  
Are we doing things right and efficiently?  
Are there better ways of doing it?



Evaluation is a ***systematic*** assessment of an activity (program, strategy, etc.) that assesses *relevance, coherence, effectiveness, efficiency, results and sustainability.*

## Project/Program Evaluations:

Mid-term  
Terminal

Other forms of evaluation: impact, thematic, performance, country, corporate, comprehensive

# Evaluation in the GEF

## Two overarching objectives:

- Promote **accountability** for the achievement of GEF objectives through the assessment of *results, effectiveness, processes, and performance* of the partners involved in GEF activities.
- Promote **learning, feedback, and knowledge sharing** on results and lessons learned among the GEF and its partners as a basis for decision making on policies, strategies, program management, programs, and projects; and to improve **knowledge and performance**.

# GEF Independent Evaluation Office

## **Mission:**

Enhance global environmental benefits through excellence, independence, and partnership in monitoring and evaluation.

## **Functions:**

Accountability

Promote knowledge sharing and Learning

## **Brief history:**

**1996** — Initially established as an M&E unit within the GEF Secretariat

**2003** — The M&E unit was made independent of the GEF Secretariat

**2005** — The unit was renamed as GEF Evaluation Office

~~**2013** — The office was renamed as GEF Independent Evaluation Office~~

# GEF IEO Stakeholders



## **Clients with a governance role:**

GEF Council,  
GEF Assembly,  
the Replenishment group



## **Clients that carry out decisions of the governing bodies:**

GEF Secretariat,  
GEF Agencies,  
executing agencies at the country or regional level



## **Country clients**



## **Clients involved in monitoring and evaluation**



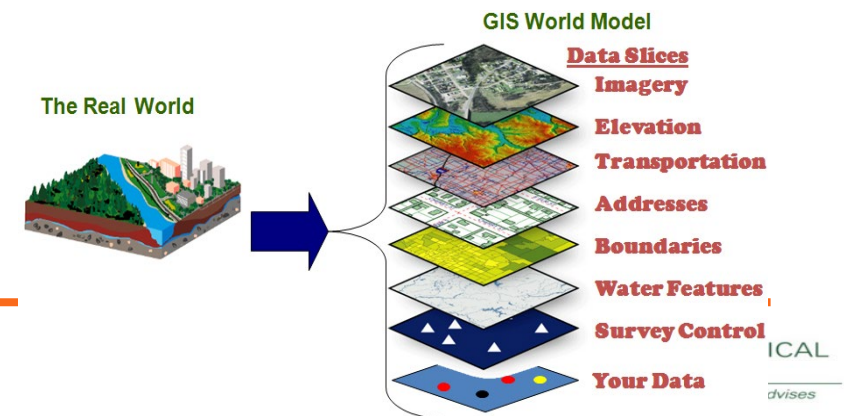
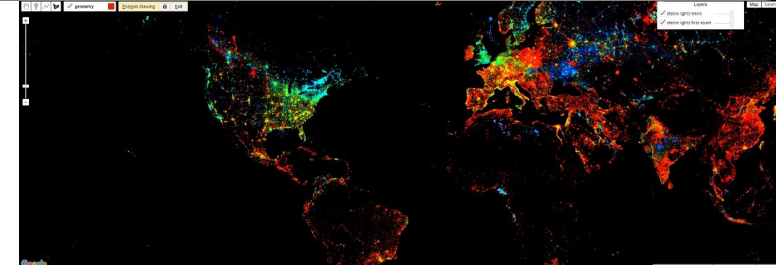
**Wider audience:** environmental entities, academia,  
research institutions, civil society, general public

# Independent Evaluations and Methods

- Semi-Annual Evaluation Report
- Impact, Thematic, Performance, Corporate, Country Clusters
- Comprehensive Evaluations every 4 years

## Methods

- Qualitative
- Quantitative including GIS, Remote Sensing, Big Data Analytics



# *Seventh Comprehensive Evaluation of the GEF*

*A*

Provide  
**evidence**  
for GEF-8  
replenishment

*B*

Assess to what  
extent the GEF  
is achieving its  
objectives of  
enhancing **global  
environmental  
benefits**

*C*

Identify potential  
areas for  
**improvement**

*D*

Assess the GEF's  
**progress** in  
implementation  
and achievement  
of the GEF 2020  
Strategy

# The GEF Evaluation Policy

- Defines the concepts, role, and use of evaluation within the GEF
- Defines the institutional framework and responsibilities
- Indicates four minimum requirements:
  1. Design of M&E plans
  2. Application of M&E plans
  3. Project/program Terminal Evaluations
  4. Engagement of Operational Focal Points in M&E

# The GEF Evaluation Policy: 4 Minimum Requirements

## 1. Design of M&E Plans

- Concrete and fully budgeted M&E plan
- Align with GEF focal area results frameworks
- Baseline data
- Mid-term reviews and Terminal Evaluations
- Organizational set up and budget

## 2. Application of M&E Plans

- SMART indicators
- Baseline for the project is fully established
- Organizational set up for M&E is operational and its budget is spent as planned

## 3. Project and Program Evaluation

All FSPs will be evaluated and evaluations are

- Independent
- Apply evaluation norms and standards
- Assess, outputs and outcomes, likelihood of sustainability

## 4. Engagement of Operational Focal Points

- OFPs should be informed on M&E activities
- GEF Agencies keep track of the application of this requirement

# New Features in 2019 Evaluation Policy

- **Program-level evaluation**
- Evaluation of jointly implemented projects
- Collection of data on socio-economic co-benefits and geospatial coordinates wherever possible
- **Expanded coverage of GEF Priorities based on IEO Gap Analysis**  
➡ gender, safeguard standards, stakeholder engagement, other

# Underpinning IEO Work: Terminal Evaluations

## **Terminal Evaluations Include:**

**Results:** Outputs, outcomes and progress to impact

**Implementation,** execution, and project cycle related information

**Project finances** including co-financing

**Recommendations** and Lessons for the future

## **GEF Evaluation Policy (2019): Minimum Requirement 3**

**Terminal evaluations** mandatory since 1995

**For Full-sized projects** required

**For Medium-sized projects** encouraged

## **Terminal Evaluation Guidelines:**

**Available at**

**<https://www.gefio.org/evaluations/guidelines-gef-agencies-conducting-terminal-evaluation-full-sized-projects>**

**The TE Guidelines** are being updated to incorporate the new provisions on program level evaluation included in the recently approved GEF Evaluation Policy

# Characteristics of a good terminal evaluation

## Quality

- Outcomes
- Consistency and comprehensiveness
- Sustainability
- Lessons and recommendations
- Project finances
- M&E

## Other characteristics

- Transparency and timeliness
- Candor
- Balance
- Utility

FOR MORE  
VISIT US AT [www.gefieo.org](http://www.gefieo.org)



# Relations with Conventions