



The GEF Project and Program Cycle

Agency Fee policy

Project cancellation Policy

Henry Salazar – Coordinator of Operations
GEF INTRODUCTION SEMINAR

Wednesday, January 23, 2019

GEF Project Modalities

Full-sized Project

GEF project financing > 2 million US\$

Medium-sized Project

GEF project financing \leq 2 million US\$

Enabling Activity

GEF financing for the preparation of a plan, strategy or report to fulfill commitments under a Convention

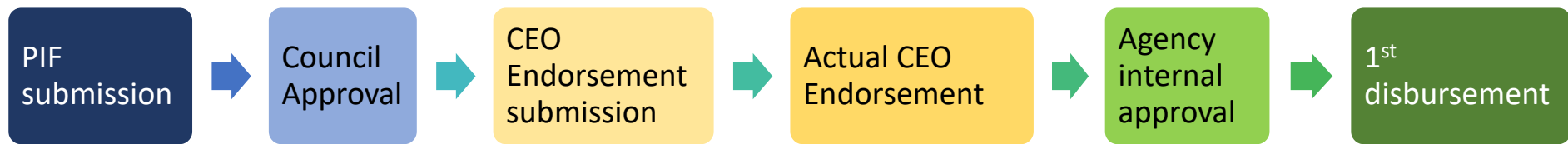
Program

A longer term and strategic arrangement of individual but interlinked projects that aim at achieving large-scale impacts on the global environment

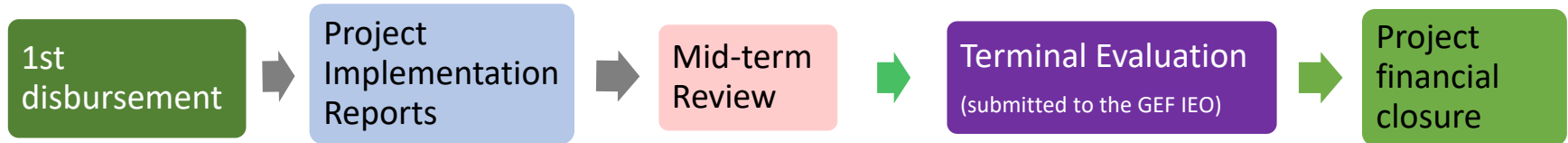
GEF Project Cycle

Full-sized projects

preparation



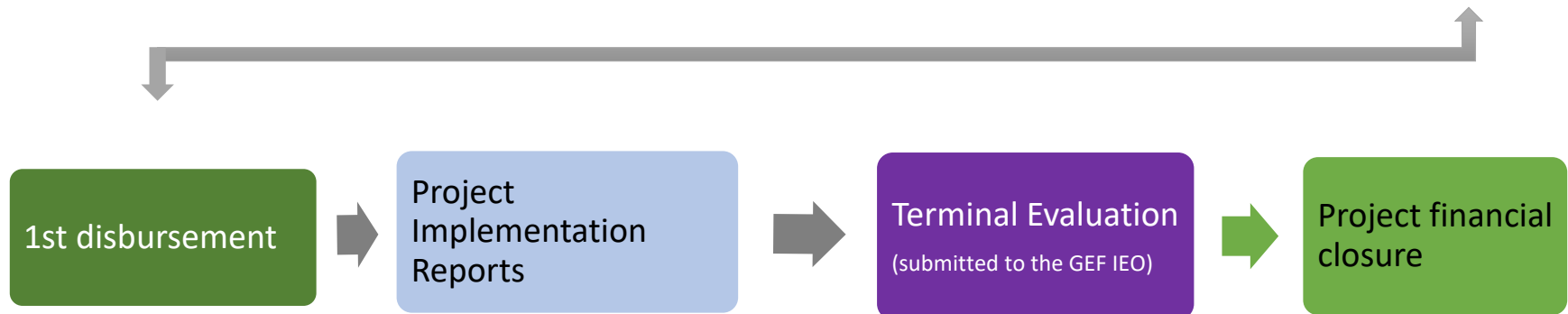
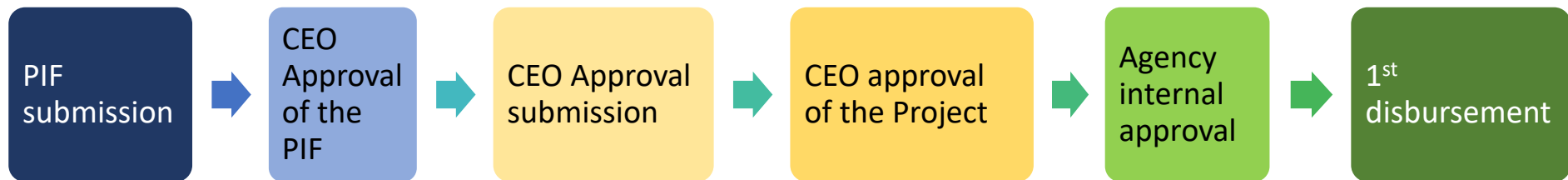
implementation



GEF Project Cycle

Medium-sized projects (2-step approval)

preparation

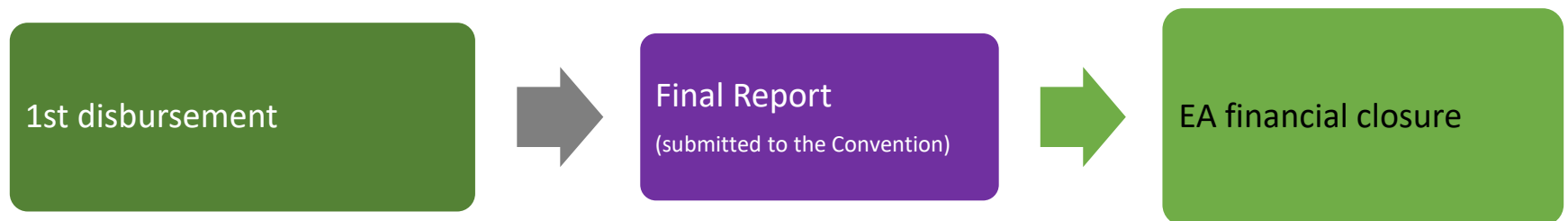
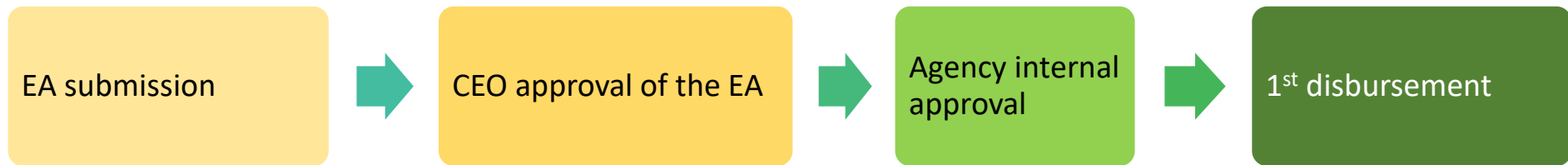


implementation

GEF Project Cycle

Enabling Activities (EA)

preparation

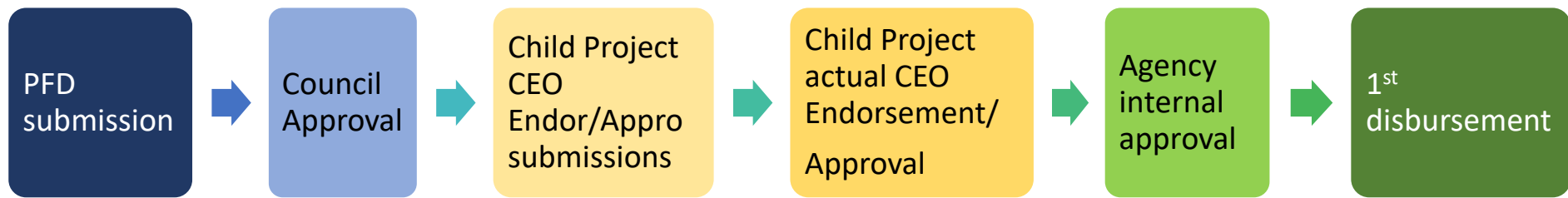


implementation

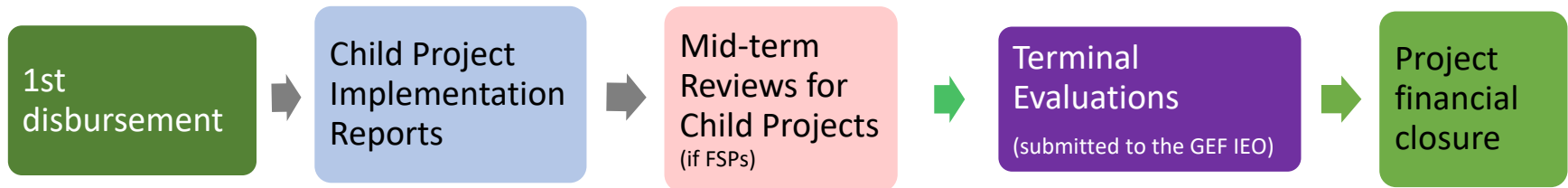
GEF Project Cycle

Programs

preparation



implementation



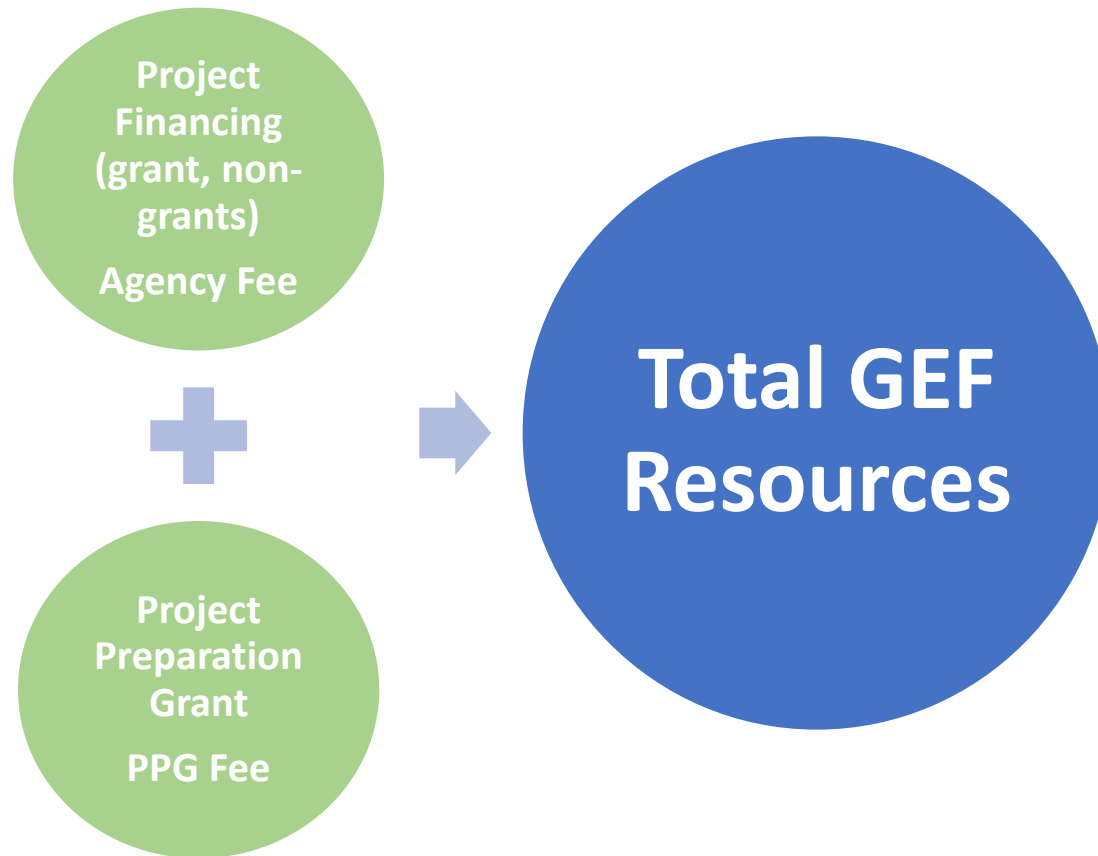
GEF Agency Fee Policy

What does this policy do?

Establishes the fee structure for all GEF Agencies implementing GEF projects.

Clarifies the **type of activities** covered by the Agency fee.

GEF Financing

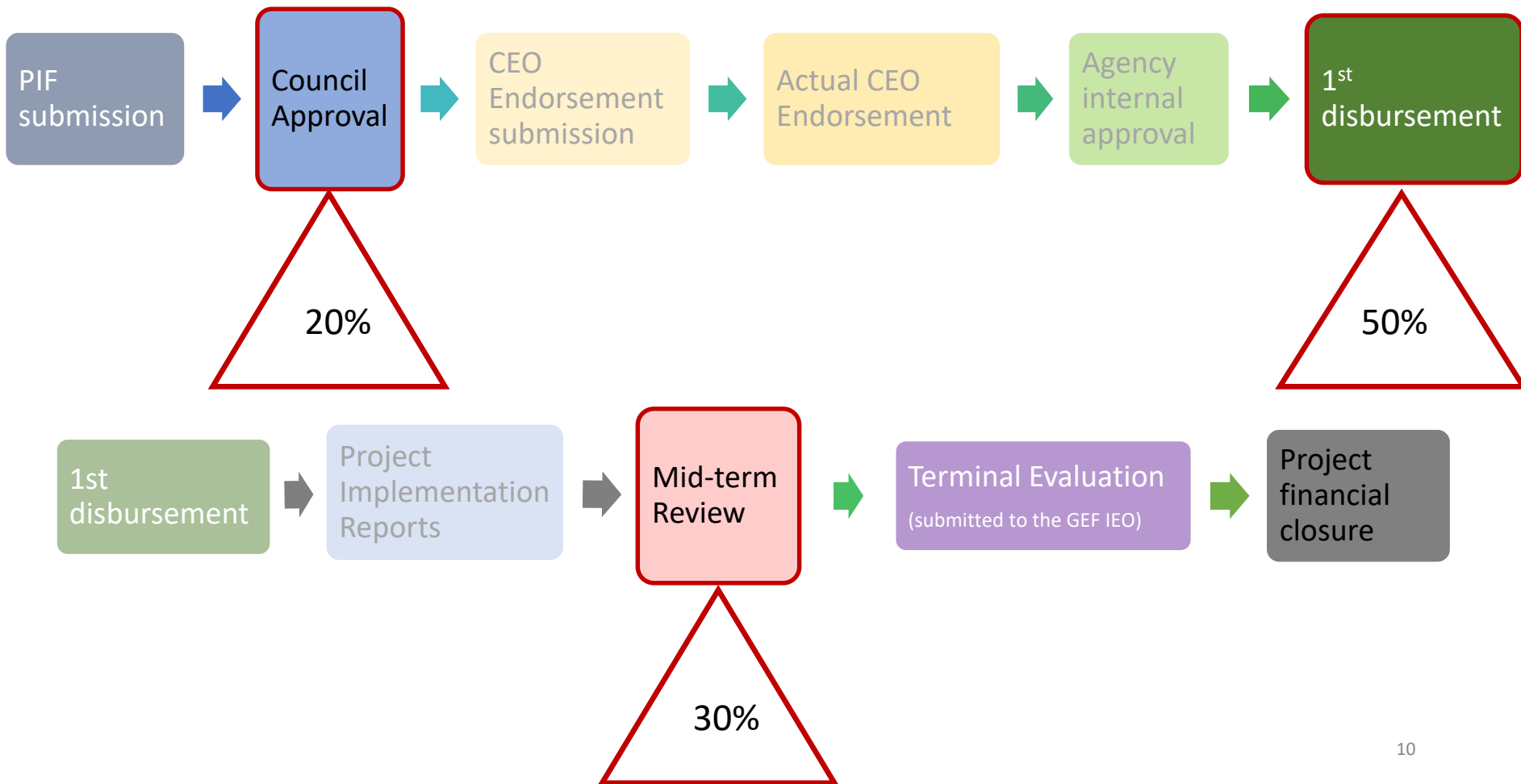


Fee structure

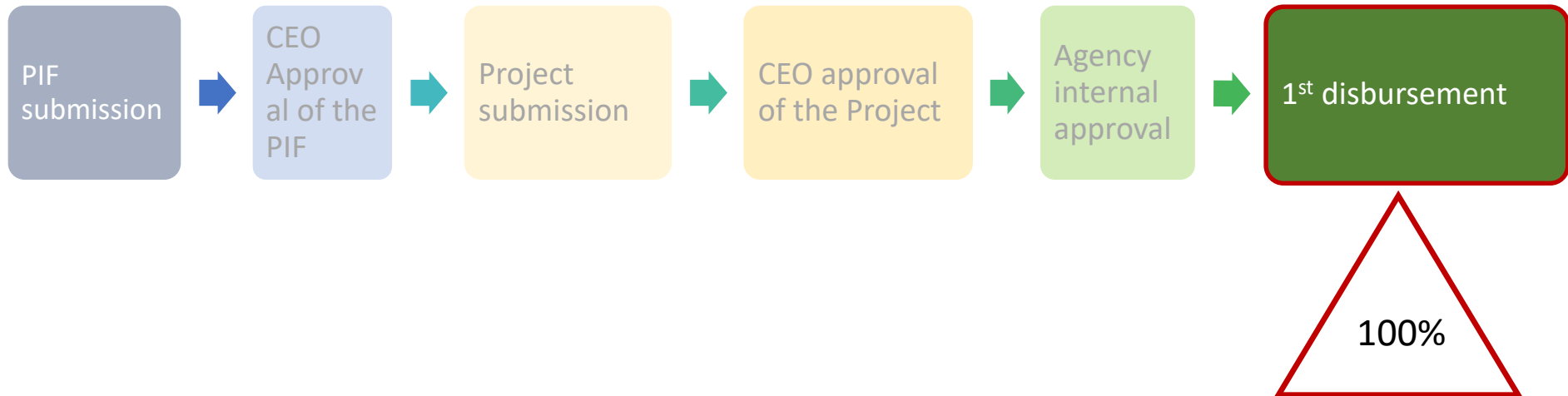
Type of project	Project Financing	Fee level GEF Agencies	Fee level for Agencies accredited in 2015
PFD, FSP, MSP, EA	=/ < \$ 10 million	9.50%	9.00%
	> \$ 10 million	9.00%	9.00%
PPG	Follow the same rate applicable for the related project financing		

BOAD
 CAF
 CI
 DBSA
 FECO
 FUNBIO
 IUCN
 WWF-US

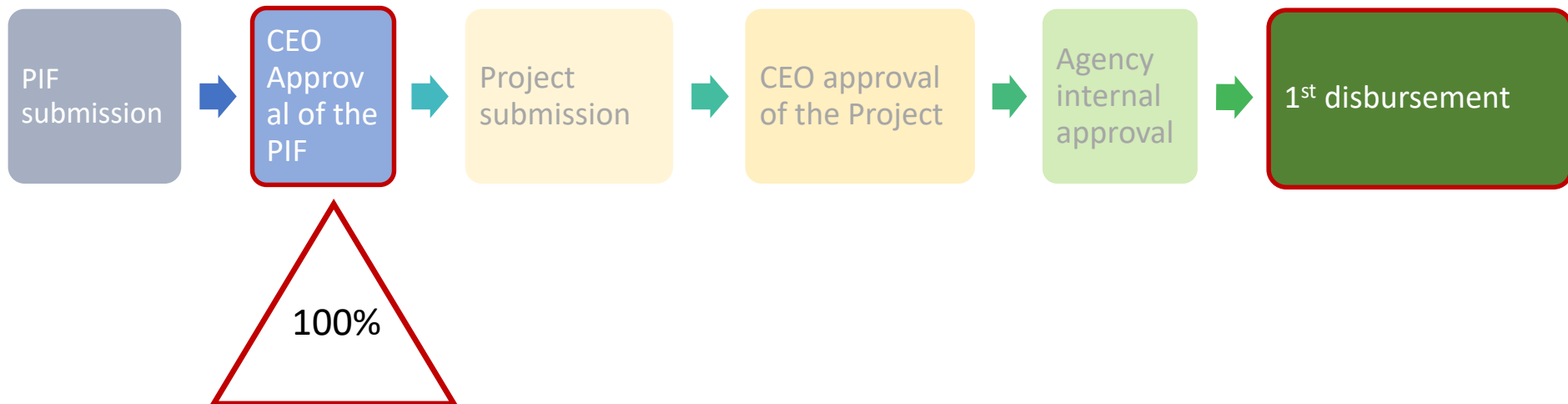
Agency Fee schedule for FSPs



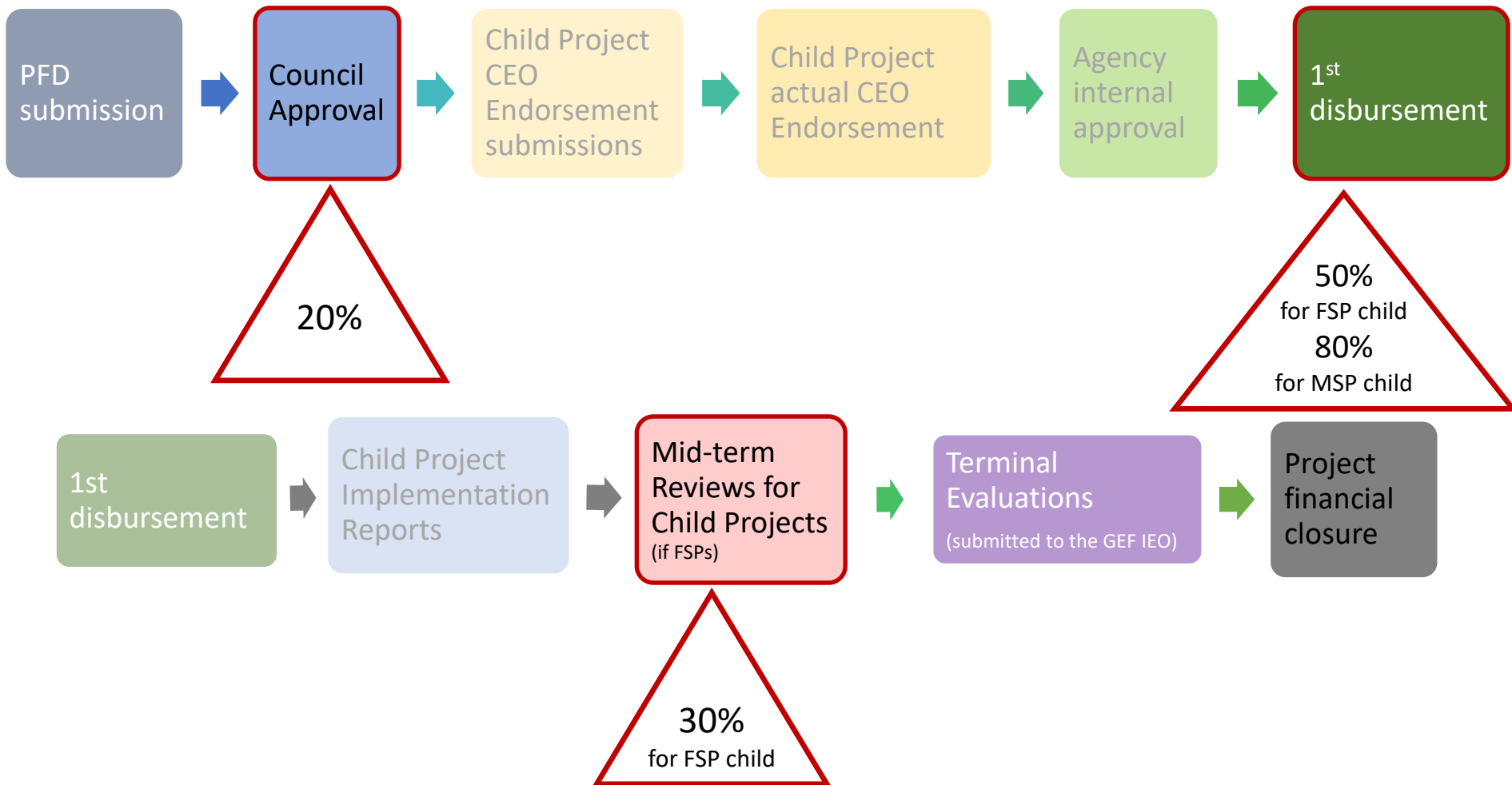
Agency Fee schedule for MSPs



Agency Fee schedule for EAs



Agency Fee schedule for Child Projects under Programs



Activities covered by the Agency Fee

The fees provided to GEF Agencies cover:

- i. **project cycle management services**; and
- ii. participation in GEF **corporate activities**.

For the GEF Agencies accredited in 2015 the GEF Agency fee covers only project cycle management services (and hence are not obligated - but encouraged - to participate in GEF corporate activities)

Project cycle management services

- ❑ Includes activities throughout the project cycle, such as:
 - project identification
 - preparation of the project concept
 - preparation of the detailed project document
 - internal approval, initiation, and implementation of projects
 - project completion and evaluation
 - financial closure

Corporate Activities

- ❑ Includes activities that help promote the efficiency of the GEF, such as:
 - policy support
 - outreach
 - knowledge sharing
 - support to the GEF Independent Evaluation Office, and
 - institutional relations

Project Cancellation Policy

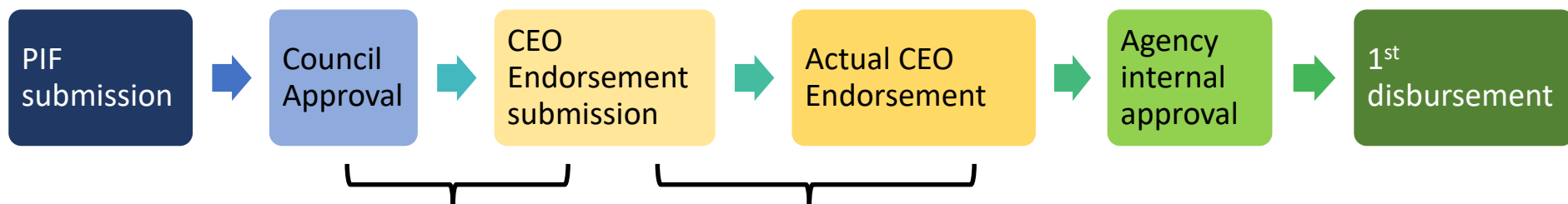
What does this policy do?

Incentivizes faster project preparation

Sets out the principles, rules, and procedures to cancel or suspend projects or uncommitted funds approved as part of GEF programs

Project Cancellation – time standards for preparation of FSPs

Policy: Full-sized projects will be cancelled if they have not been CEO endorsed within 18 months of Council Approval



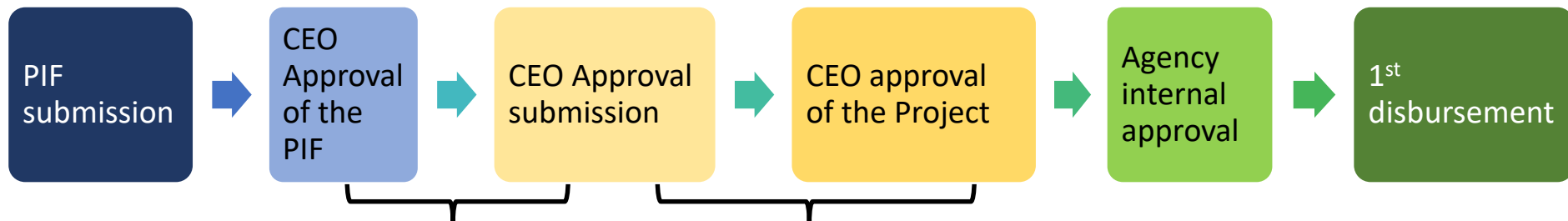
8 months after PIF approval: GEF **notification** to country OFP and Agency

18 months after PIF approval: either **CEO endorsement** or **cancellation**

12 months after PIF approval: CEO endorsement **submission** (OFP notifies if not possible)
If OFP doesn't notify within **12** months, **cancellation**

Project Cancellation – time standards for preparation of MSPs

Policy: Medium-sized projects will be cancelled if they have not been CEO approved within 12 months of CEO Approval of the PIF



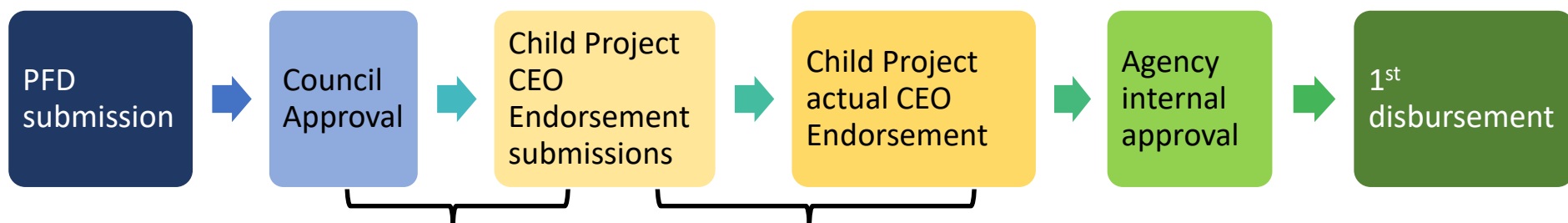
6 months after PIF approval: GEF **notification** to country OFP and Agency

12 months after PIF approval: either **CEO approval** or **cancellation**

8 months after PIF approval: CEO approval submission
(OFP notifies if not possible)
If OFP doesn't notify within **8** months, cancellation

Project Cancellation – time standards for preparation of Programs

Policy: child projects under a Program will be cancelled if they have not been CEO endorsed/approved within **Program Commitment Deadline (PCD)** not exceeding 18 months



10 months before PCD: GEF **notification** to country OFP and Agency

6 months before PCD: CEO endorsement/approval **submission**

(OFP notifies if not possible)

If OFP doesn't notify 6 months before PCD, cancellation

After the passing of the PCD (≤ 18 months): either **CEO endorsement/approval** or **cancellation of the remaining PFD balance**

Project Cancellation Policy – other circumstances

- The **recipient country** and / or the **GEF Agency** may also request to cancel or suspend a project for reasons not linked to the project preparation time standards – and the GEF CEO may authorize such cancellation or suspension

Prior to CEO endorsement/approval, a project can be cancelled.

After CEO endorsement/approval, a project may be terminated or suspended

Project Cancellation Policy – Procedures for other circumstances

- GEF Agency **consults with the recipient country**, all relevant **government agencies**, and **other partners**, including co-financiers, prior to such cancellation or suspension.
- Required actions by Agency:
 - i. consultation with the recipient country;
 - ii. written notification to the GEF Secretariat and the Trustee; and
 - iii. returns any un-used GEF funds, if required, consistent with the provisions of Financial Procedures Agreement with the Trustee regarding the return of funds.

Thank you!