



GEF Approaches



**GEF Expanded Constituency Workshop
Europe and Central Asia
Minsk, July 2019**



Pilar Barrera Rey- GEF Secretariat



**Stakeholder
Engagement**



**Gender Equality &
Women's Empowerment**



**Environmental &
Social Safeguards**



Why do we need a specific approach to Stakeholder Engagement?

GEF 's Approach to Stakeholder Engagement

*“full **disclosure** of all non-confidential information, and **consultation with, and participation as appropriate of,** major groups and local communities, throughout the **project cycle.**”*

(Paragraph 5 of GEF Instrument)

GEF's Evolving approach to Stakeholder Engagement

1994

Instrument- Disclosure and participation

1996

Policy on public involvement

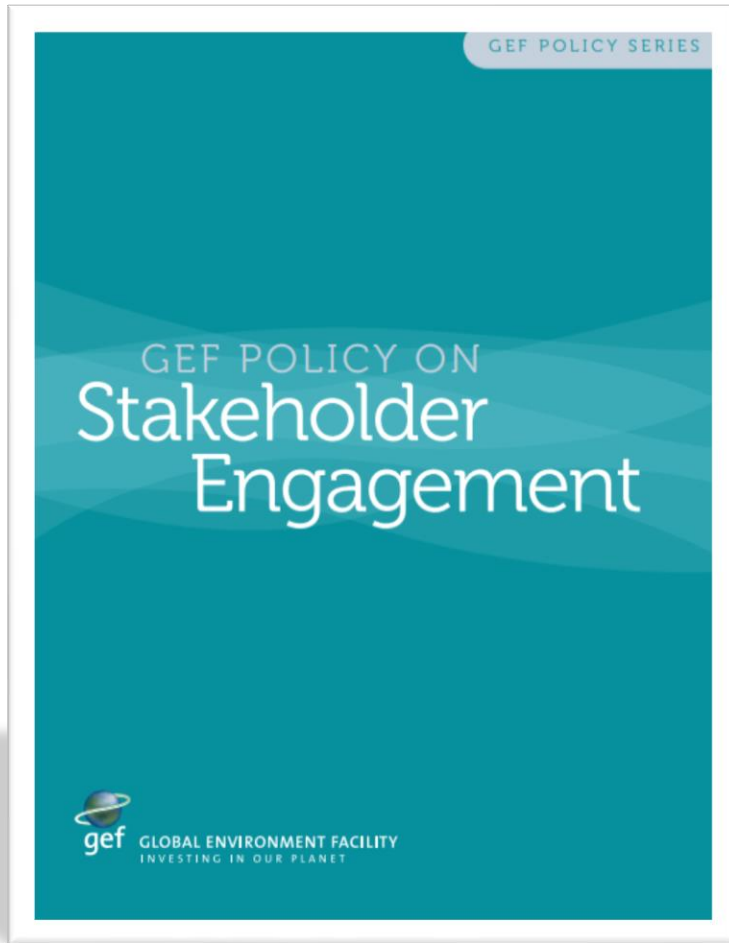
2014

Guidelines to implement the principles of the 1996 Policy

2017

Policy on stakeholder engagement

Updated Policy on Stakeholder Engagement



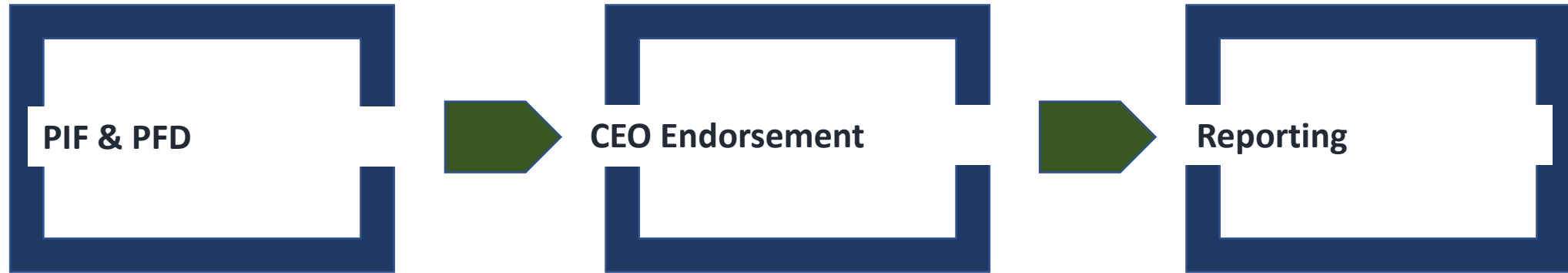
Objective

Promote the **inclusive and meaningful participation** of Stakeholders in GEF's governance and operations in support of the GEF's mandate to protect the global environment.

Updated Policy on Stakeholder Engagement



Project and Program Cycle Requirements



- ✓ Description of any consultations undertaken
- ✓ Information on how will stakeholders be engaged and means of engagement throughout the project cycle

- ✓ Provide Stakeholder Engagement Plan or equivalent documentation

- ✓ PIRs, MTRs, TEs information on progress, challenges and outcomes of stakeholder engagement

GEF Secretariat Responsibilities

- ☐ Report to the Council
- ☐ Assess if measures are adequate
- ☐ Update and maintain templates

And...

- ☐ Engage with stakeholders: transparent, inclusive manner aimed at fair representation
- ☐ Appropriate stakeholder engagement in the development of GEF policies, guidelines and strategy



Guidelines for the Implementation of the Policy

Guidelines provide guidance and information on how to implement the Policy, including best practices and useful tools that can be used to conduct meaningful stakeholder engagement throughout the GEF program and project cycles.

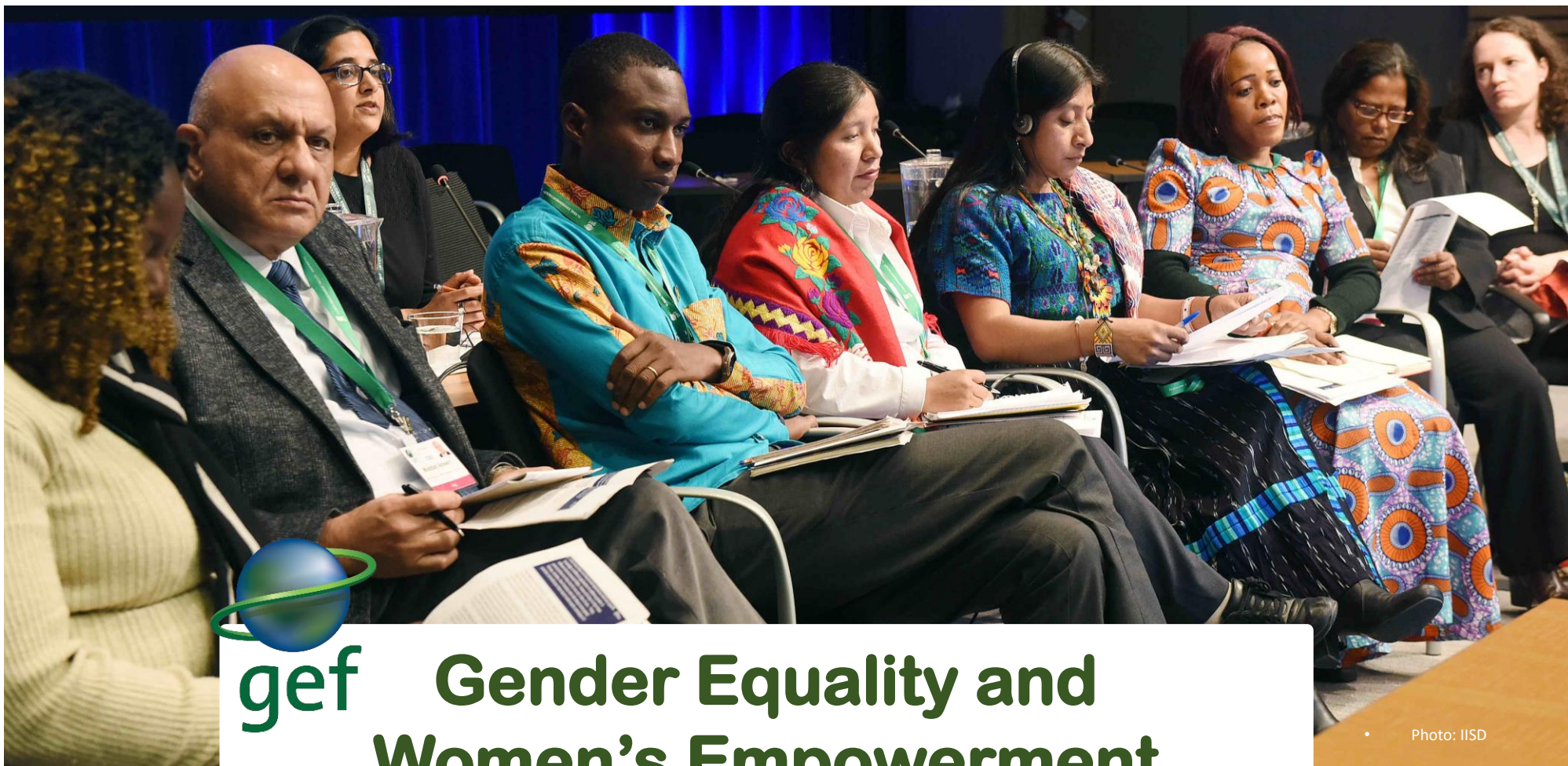
https://www.thegef.org/sites/default/files/council-meeting-documents/EN_GEF.C.55_Inf.08_Guidelines_Stakeholder_Engagement.pdf



Stakeholder Engagement

for further information please contact
Pilar Barrera Rey
Senior Operations Officer, Partnerships
Partnerships Coordinator

pbarrera@thegef.org



gef

Gender Equality and Women's Empowerment

• Photo: IISD

Gender and the Environment

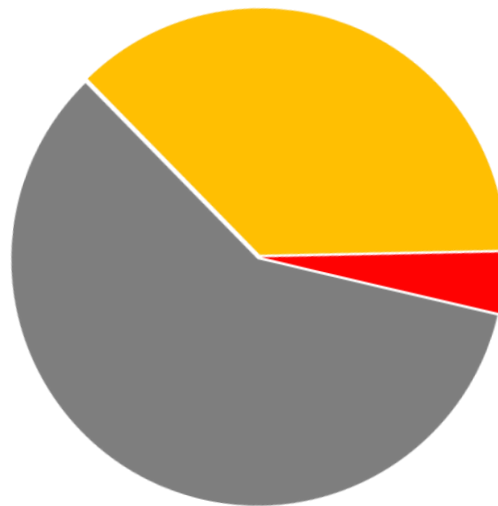
Compared to men, women

- are more absent in decision making
- have less access to and control over land and natural resources
- have less access to markets, financing and credit

43%

Globally, 43% of agricultural laborers are women, but only 20% of land has female ownership

Unequal access to land



37%

EQUAL LAND RIGHTS:

The law guarantees the same rights to own, use and control land to both women and men.

4%

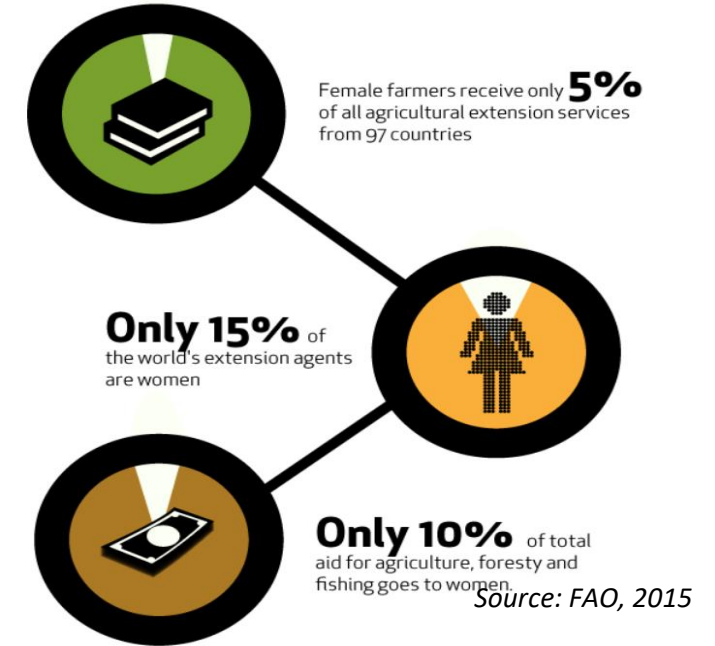
UNEQUAL LAND RIGHTS:

The law does not guarantee the same rights to own, use and control land to women and men, or women have no legal rights to own, use and control land.

59%

LEGAL LAND RIGHTS ARE NOT FOLLOWED IN PRACTICE:

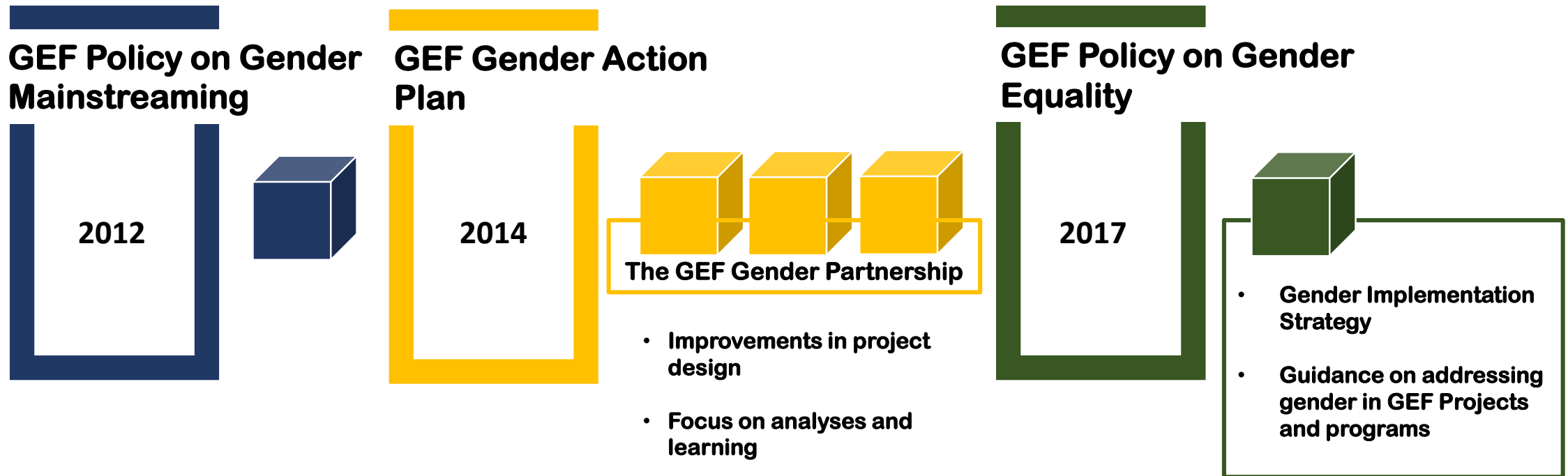
The law guarantees the same rights to own, use and control land to women and men, but there are some customary, traditional or religious practices that discriminate against women.



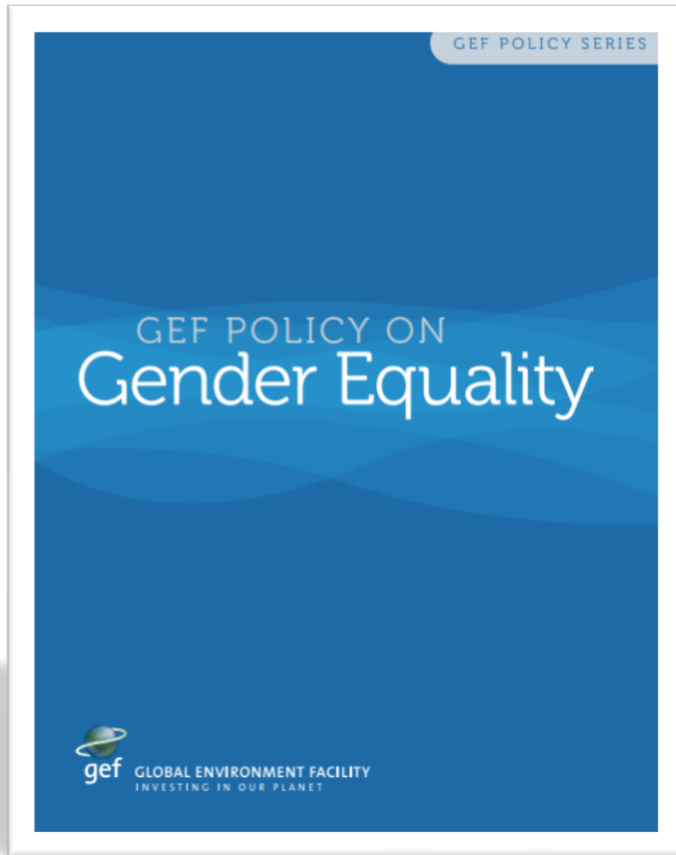
GEF's Evolving Approach on Gender



Moving from a “do no harm” to a “do good” gender responsive approach



GEF's Policy on Gender Equality



Responds to the increased attention to gender equality and women's empowerment by the MEAs that the GEF serves

Recognizes that efforts to combat environmental degradation and those to address gender inequality can be mutually supportive

Aims to catalyze projects that have the potential to materialize greater environmental impact through gender-responsive approaches and results

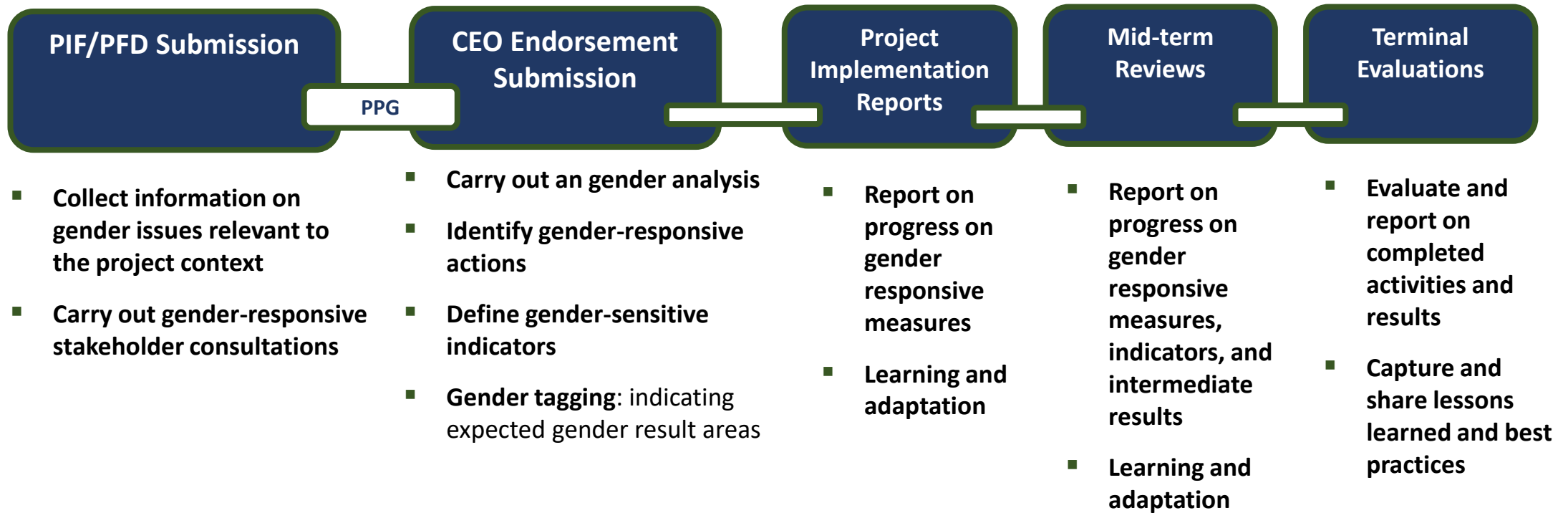
Seeks to ensure equal opportunities for women and men to participate in, contribute to and benefit from GEF-Financed Activities

Outlines clear GEF project and program cycle requirements

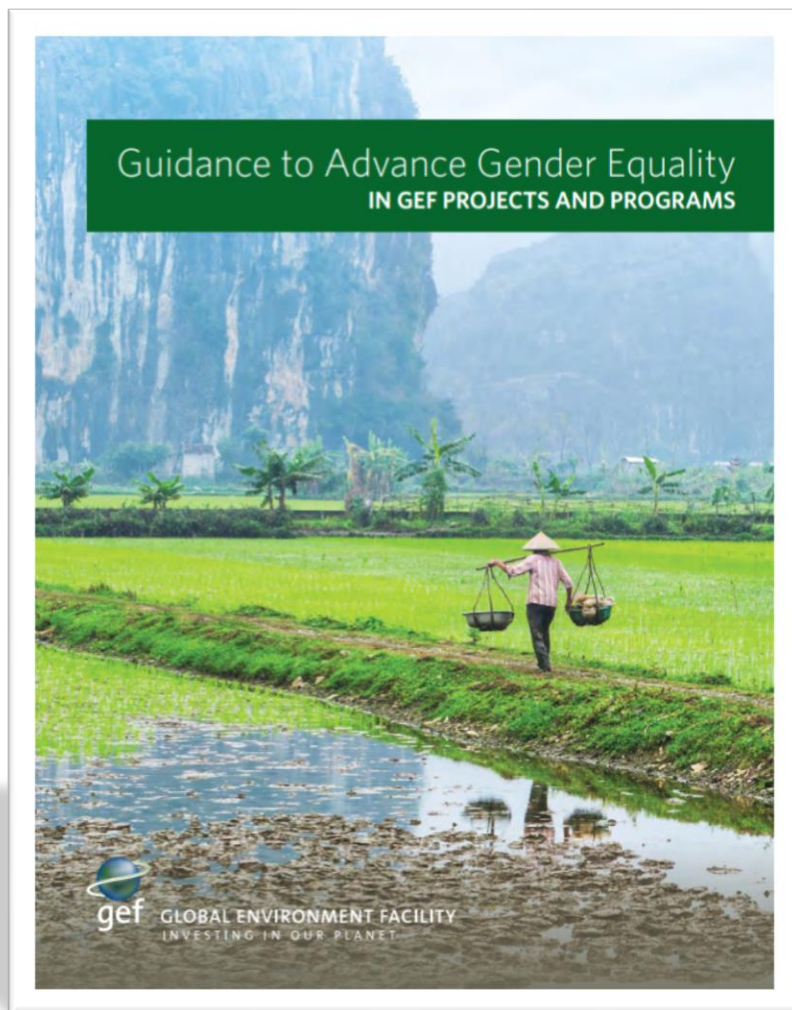
Gender-responsive project identification and development

Project Identification and Development

Project Implementation and Monitoring



Additional Resources



<https://www.thegef.org/sites/default/files/publications/GEF%20Guidance%20on%20Gender.pdf>



SGP The GEF
Small Grants
Programme



Open online Course on Gender and Environment



Do you want to find out why promoting gender equality and women's empowerment can help deliver better environmental outcome, and to figure out how you can do it?

The course will give you facts and figures and the knowledge and tools to mainstream gender, and to be an effective change-maker for sustainable development.

It is a “one-stop-shop” for information on gender dimensions linked to biodiversity, climate change, land degradation, international waters, and chemicals and waste.



<https://www.unccllearn.org/course-gender-and-environment>



Gender Equality

for further information please contact:
Gabriella Richardson Temm
GEF Senior Specialist and Lead on Gender and
Social Issues

grichardsontemm@thegef.org



Environmental and Social Safeguards

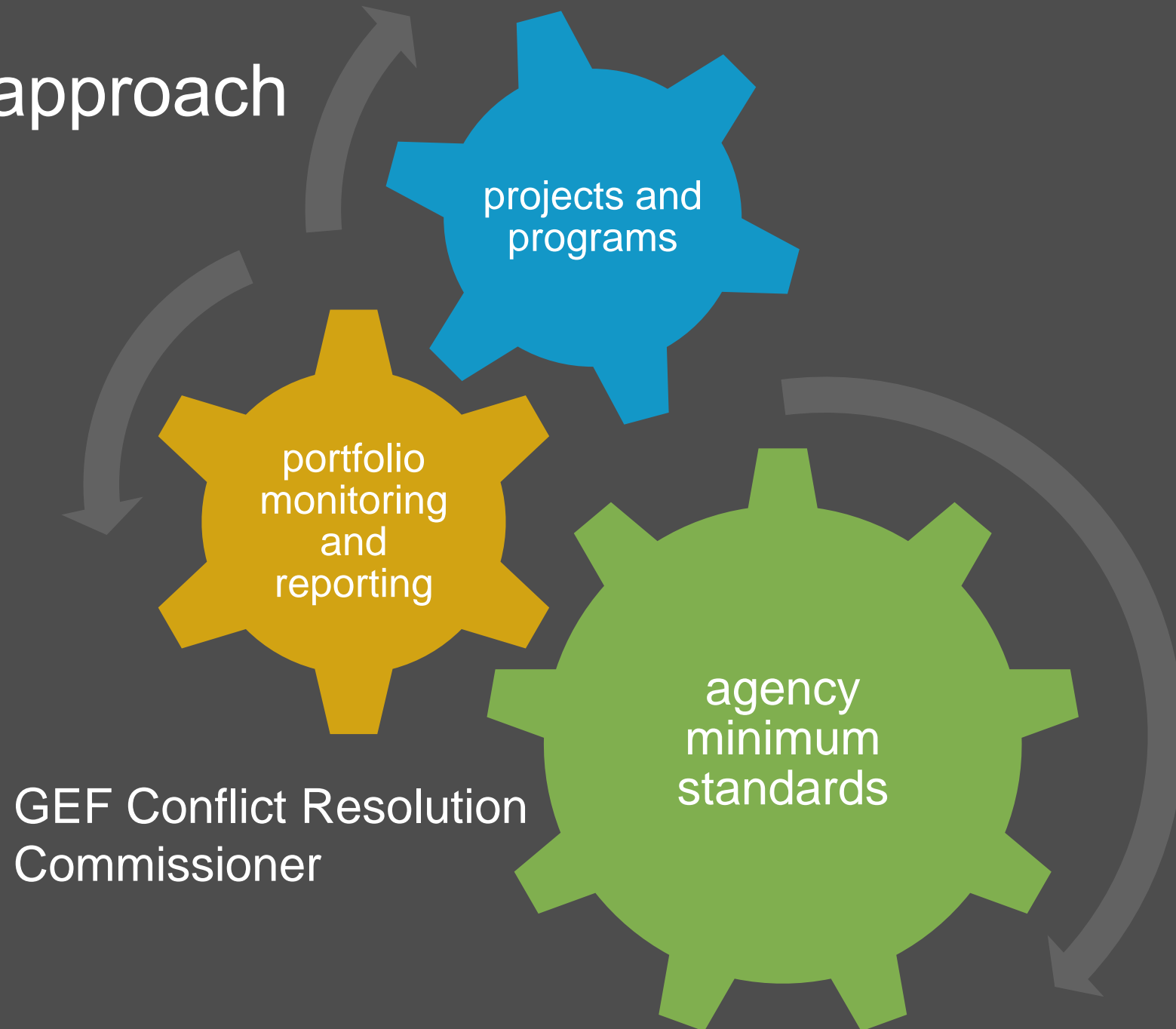
ESS Policy aims to:

ensure that GEF projects and programs systematically identify and address any environmental and social risks and potential impacts



evolution of the policy

the GEF's approach at a glance



minimum standards for GEF Agencies



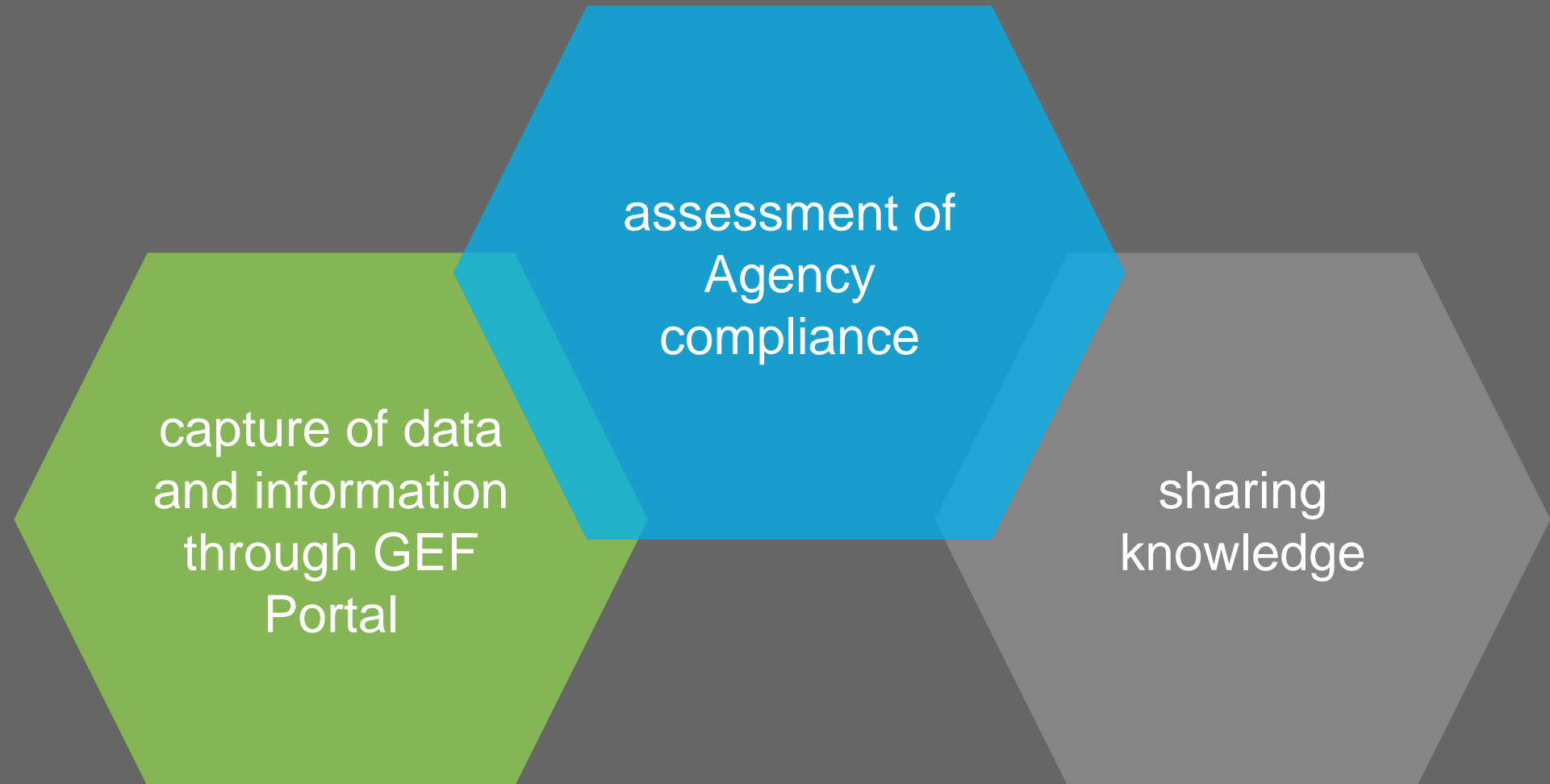
Minimum Standards

- 1: Environmental and Social Assessment, Management and Monitoring**
- 2: Accountability, Grievance and Conflict Resolution**
- 3: Biodiversity Conservation and the Sustainable Management of Living Natural Resources**
- 4: Restrictions on Land Use and Involuntary Resettlement**
- 5: Indigenous Peoples**
- 6: Cultural Heritage**
- 7: Resource Efficiency and Pollution Prevention**
- 8: Labor and Working Conditions**
- 9: Community Health, Safety and Security**

E&S safeguards in the project cycle



next steps





Policy on Environmental and Social Safeguards

http://www.thegef.org/sites/default/files/council-meeting-documents/EN_GEF.C.55.07.Rev_.01_ES_Safeguards.pdf