

# **GEF 2018-2022 Programming Strategy on Adaptation to Climate Change for the LDCF and SCCF and Operational Improvements**



# Strategy Highlights

## Goal:

*to strengthen resilience and reduce vulnerability to the adverse impacts of climate change in developing countries, and support their efforts to enhance adaptive capacity*

continue to serve UNFCCC and



complementarity

enabling countries to better utilize a range of climate funds to develop harmonized adaptation solutions

mainstreaming  
adaptation



Facilitating private sector, enhancing resilience

*Innovative • Strategic • Gender responsive • Developing capacity*



# Building on Comparative Advantage...

- ✓ **Country-driven and global**

*National:* NAPA, NAPs, translating NDCs into action

*Global:* addressing gaps, vetting concepts, capacity building, LDC work programme



- ✓ **Ability to offer integrated solutions**

Multiple benefits, MEA-relevant, alignment of relevant SDGs



- ✓ **Focus on innovation**

SCCF evaluated as “ideal incubator” to test and refine concepts



- ✓ **Demonstrated track record for delivery**

Supporting over 330 adaptation projects

Assessed as highly effective, impactful, and with value for money in independent evaluations, donor reviews



# LDCF

2018-2022



# LDCF Objectives and Entry Points

## Objective 1



Reduce vulnerability and increase resilience through innovation and technology transfer for climate change adaptation



Innovation in priority sectors, themes & private sector



Climate security



Incubation and accelerator support

## Objective 2



Mainstream climate change adaptation and resilience for systemic impact



Mainstream adaptation across GEF focal areas and IPs



Innovative partnerships



Support to NAP process



Support for LDC work programme



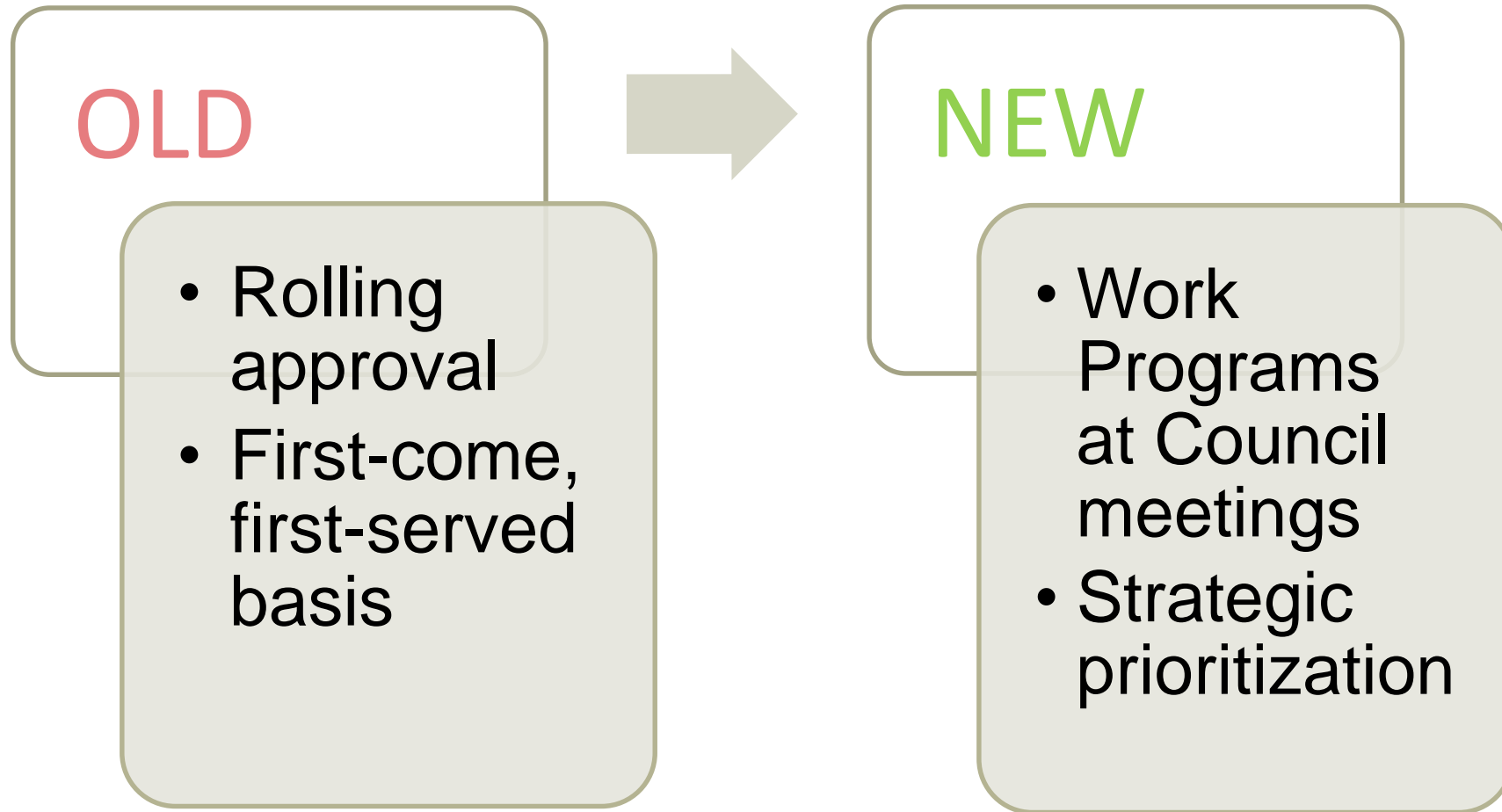
Support for enabling activities

## Objective 3



Foster enabling conditions for effective and integrated climate change adaptation

# LDCF Project Selection and Approval







## Factors for Enhanced LDCF Strategic Prioritization

- ✓ **Alignment with needs and priorities in national plans**
- ✓ **Alignment with new Programming Strategy**
- ✓ **Opportunities to leverage/catalyze support**
- ✓ **Level of LDCF resources accessed**
- ✓ **Additional factors:**
  - Potential for private sector engagement;
  - Geographical balance;
  - Extenuating circumstances; and
  - Timing of technical approval



**Synergies**





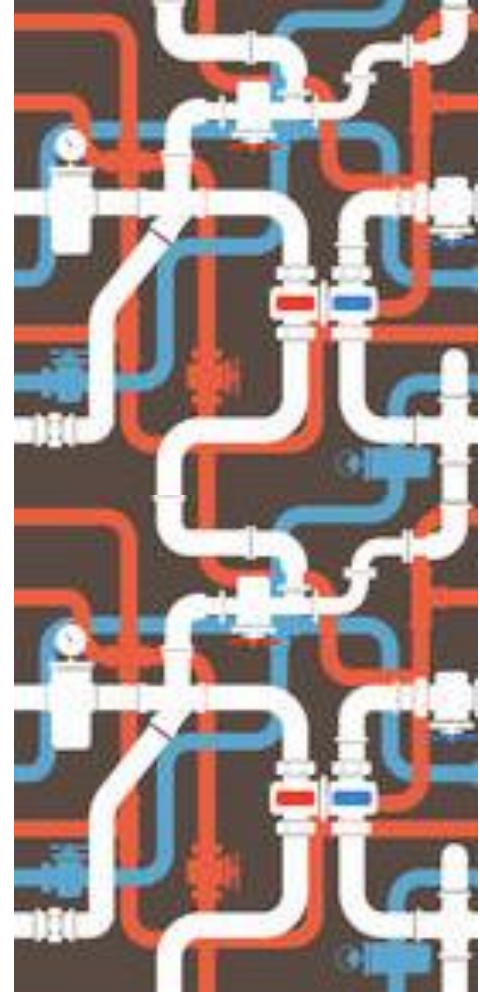
## LDCF Funding Ceiling

- Per-country cumulative ceiling raised to \$50 million, **with initial per-country cap of \$10 million for 2018-2022**
- Maintains current practice while ensuring access to as many LDCs as possible
- May be raised during GEF-7, depending on donor contributions and programming



# Consultations for Pipeline Management

- GEF Secretariat holds formal consultations with those countries that had projects in the technically cleared pipeline at the end of GEF-6, by video-conference or physical meeting, to develop plan for GEF-7:
  - (i) Explore synergistic and harmonized programming with GEF Trust Fund or other sources; and
  - (ii) Re-evaluate whether and how pipelined projects remain viable.
- Countries invited to develop or revisit, and (re-)submit proposals according to the national plan, which may or may not include updated pipeline proposal



# Regional and Global Initiatives

1

Capacity building,  
cross-learning, COP  
guidance response,  
LDC work  
programme

2

Incentive to integrate  
adaptation/resilience  
into regional and  
global projects

3

Innovative projects  
with high potential for  
all countries and with  
private sector



# SCCF

2018-2022



# SCCF Objectives and Entry Points

## Objective 1



Reduce vulnerability and increase resilience through innovation and technology transfer for climate change adaptation



Challenge Program for adaptation innovation

## Objective 2



Mainstream climate change adaptation and resilience for systemic impact



Incentive for mainstreaming adaptation and resilience

## Objective 3



Foster enabling conditions for effective and integrated climate change adaptation



Support for enabling activities in response to COP guidance



# SCCF Modalities

## **1. Challenge Program**

- ✓ 10\$ million call for proposals to be released in 2019
- ✓ GEF Secretariat to screen (pre-select) concepts and invite further development
- ✓ Approval following regular project cycle

## **2. Incentive**

- ✓ Managed outside pre-selection
- ✓ Developed and aligned with regular GEF projects programs
- ✓ Follows regular project cycle

# For further information

Please contact:

Chizuru Aoki: LDCF/SCCF Manager

Fareeha Iqbal: SIDS and Asia

Aloke Barnwal: Asia and Cities

Katya Kuang-Idba: Francophone Africa

Dustin Schinn: Anglophone Africa

Yuki Shiga: TBC



GLOBAL ENVIRONMENT FACILITY  
INVESTING IN OUR PLANET