



Independent Evaluation in the GEF

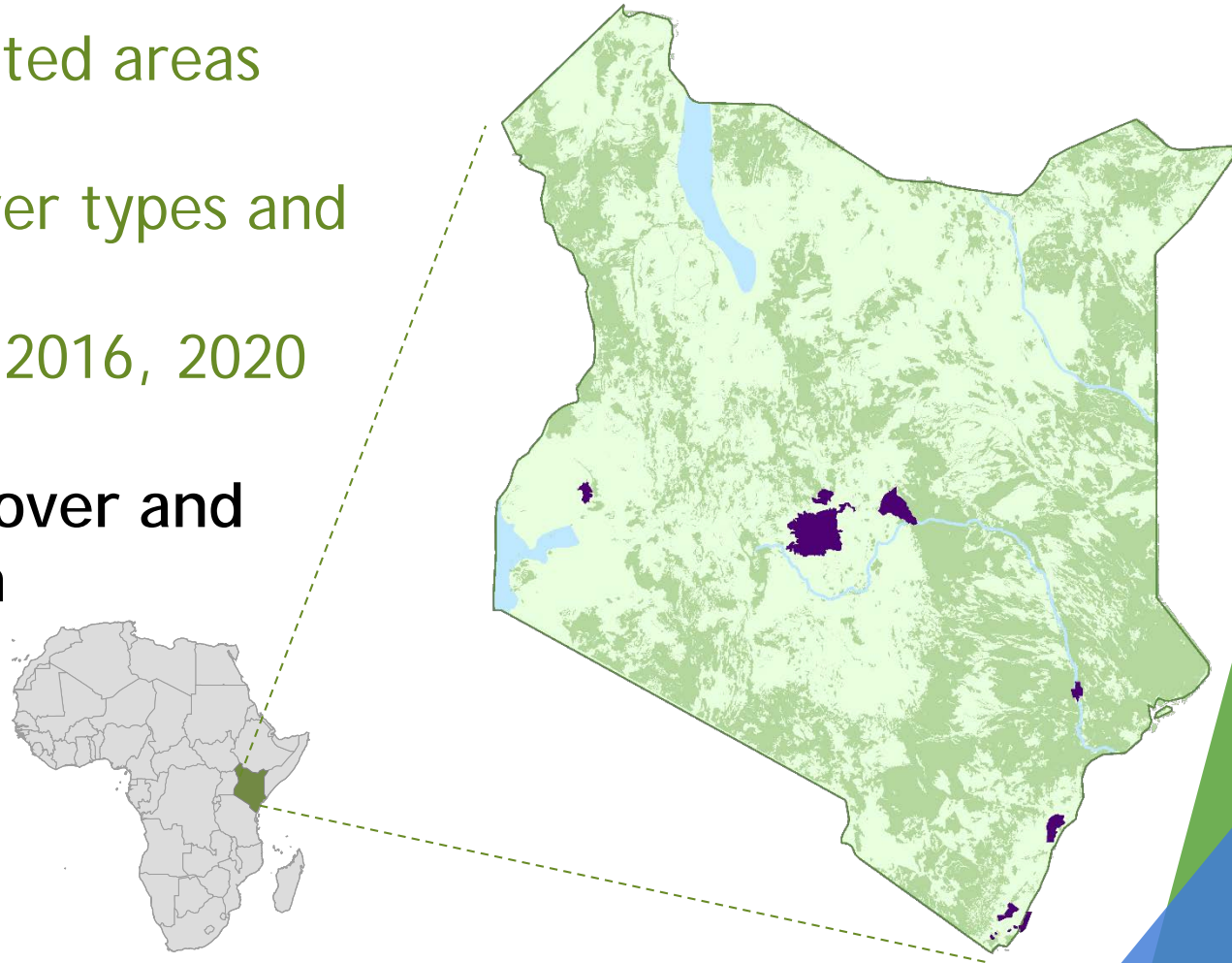
Expanded Constituency Workshop

Nairobi, Kenya
February 2020

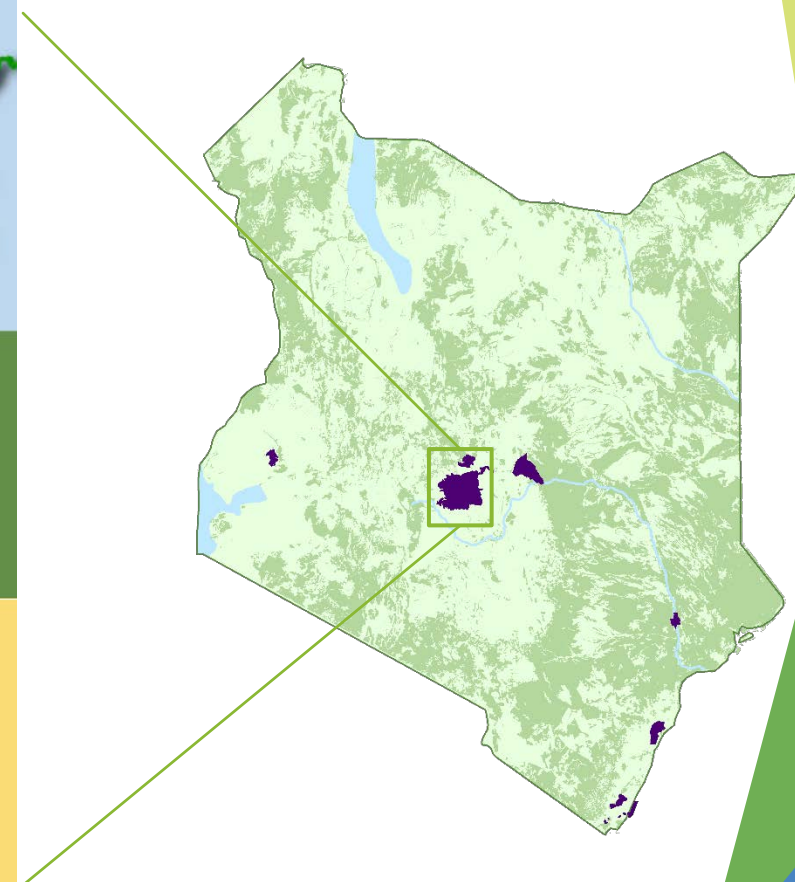
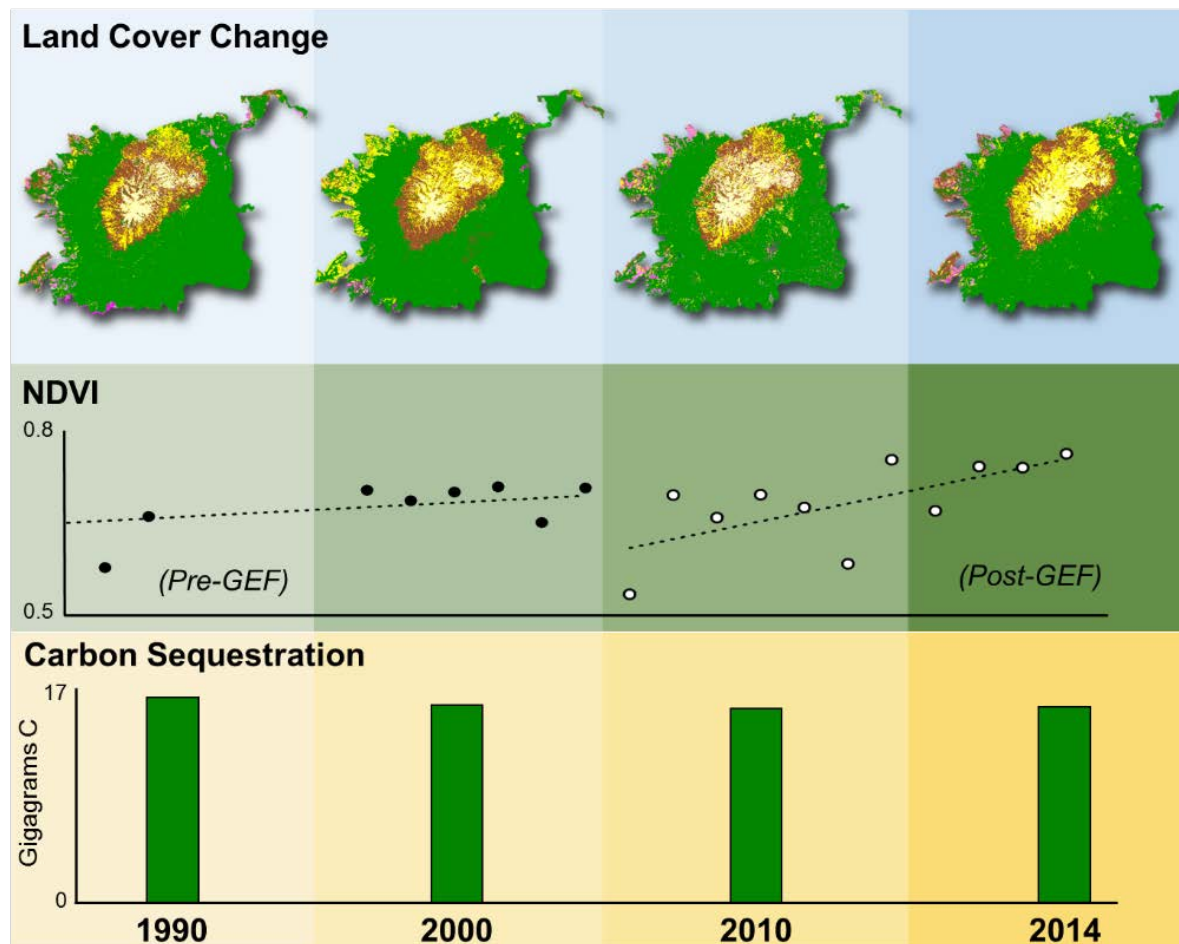


Ecological Forecasting using Geospatial Analysis in Kenya

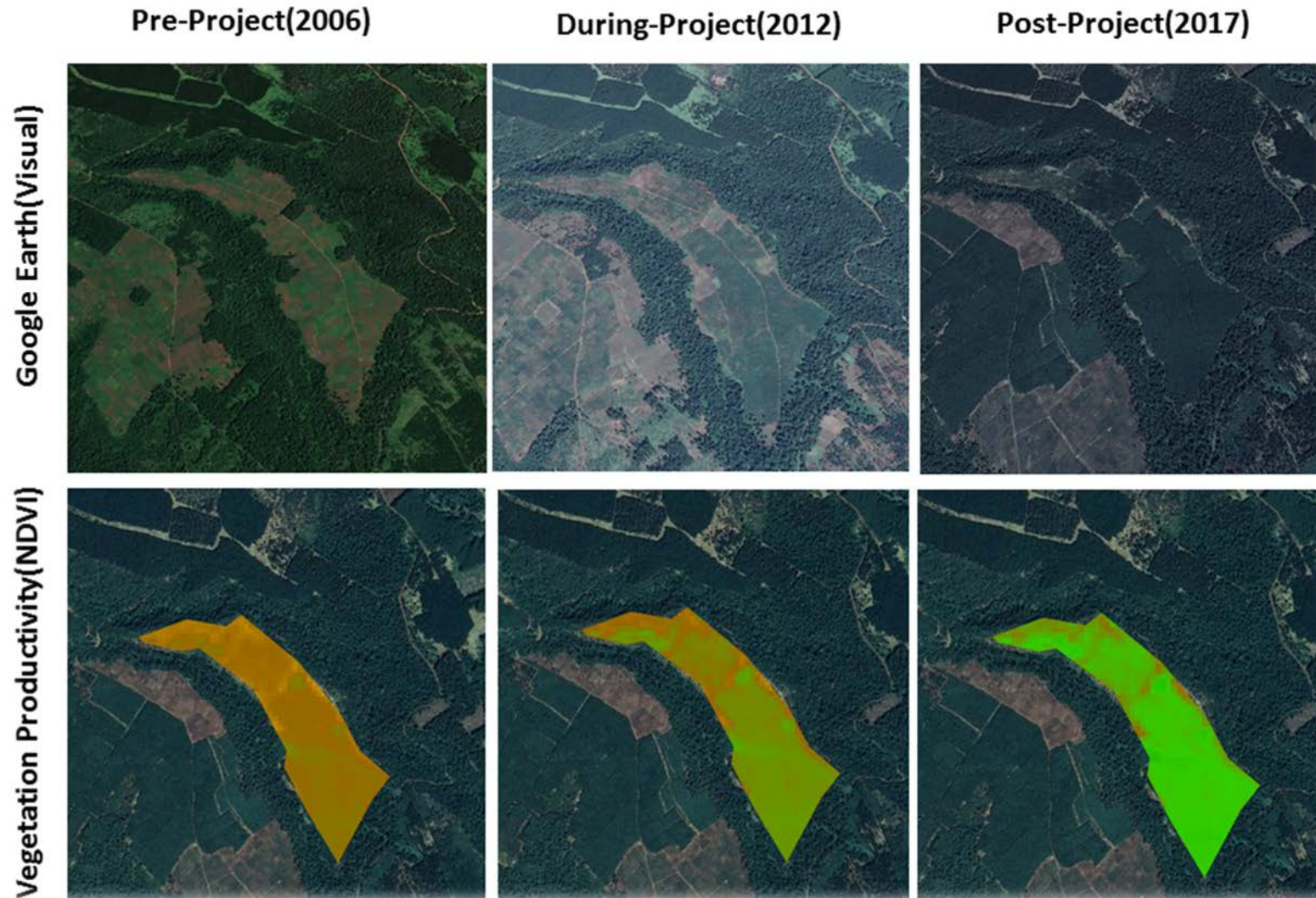
- 12 terrestrial protected areas (5035 km²)
- Diversity of land cover types and sizes
- Study periods: 1995-2016, 2020 and 2030
- Increase in forest cover and sequestered carbon



Kenya case-study: Mount Kenya National Park



Kenya case-study: Mount Kenya western slopes



Kenya case-study: Results



Protected areas have been successful in maintaining forest cover and preserving biomass



Proximity to rivers and irrigated agriculture contribute to land cover change



Community engagement and infrastructure contribute to benefits

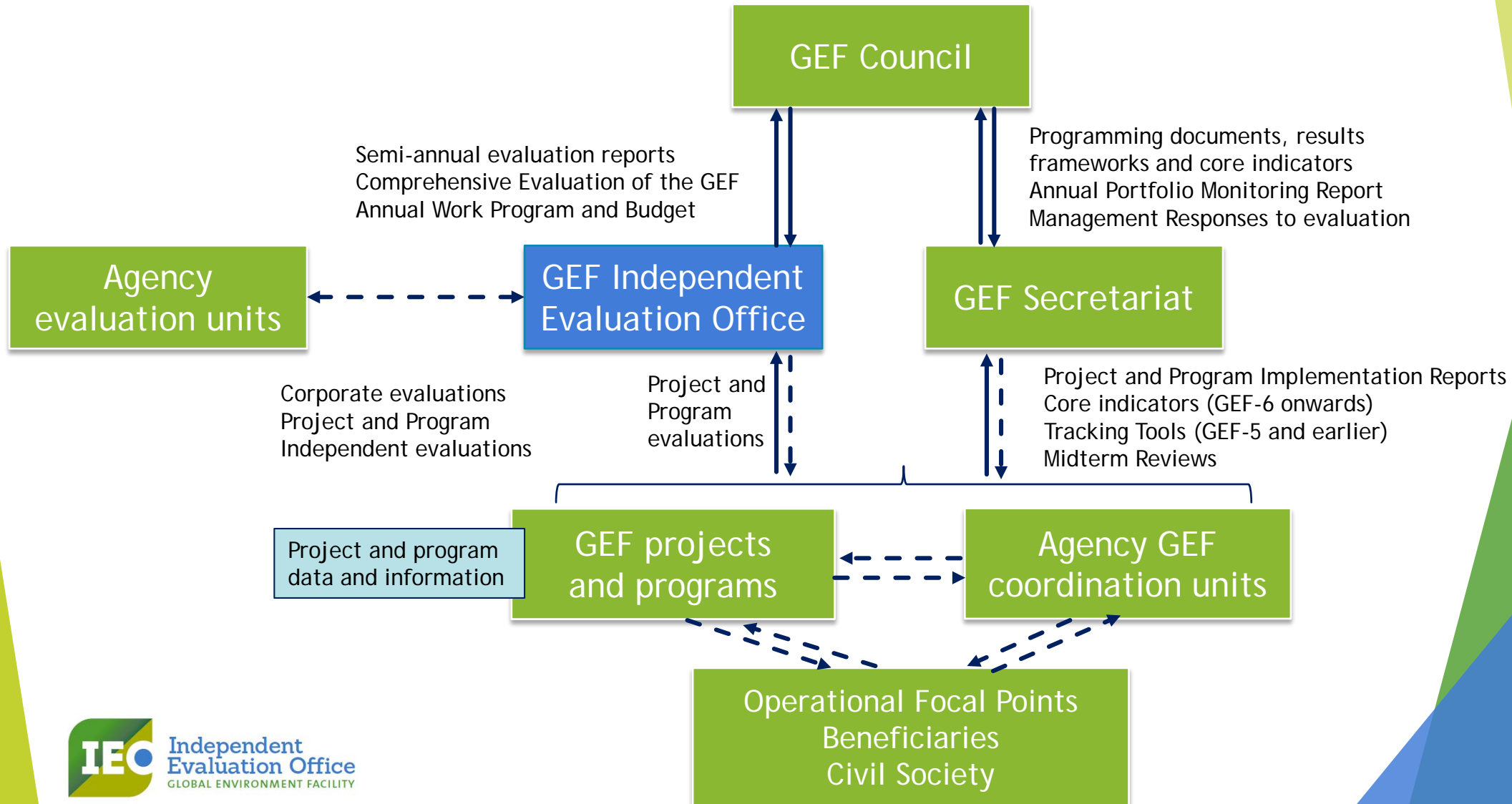
THE INDEPENDENT EVALUATION OFFICE OF THE GEF



Objectives of Independent Evaluation

- Promote **accountability** for the achievement of GEF objectives through the assessment of *results, effectiveness, processes, and performance* of the partners involved in GEF activities
- Promote **learning, feedback, and knowledge sharing** on results and lessons learned among the GEF and its partners as a basis for decision making on policies, strategies, program management, programs, and projects; and to improve **knowledge and performance**

IEO in the GEF Partnership Structure



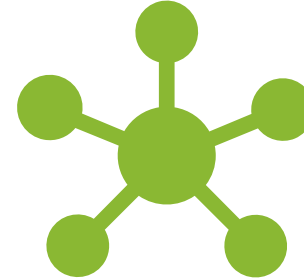
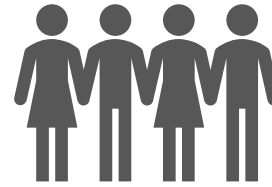
The GEF Evaluation Policy

New GEF Evaluation policy: Approved in June 2019

- Defines the concepts, roles, and use of evaluation within the GEF
- Defines the institutional framework and responsibilities
- Indicates the minimum requirements covering
 - Design of M&E plans
 - Application of M&E plans
 - Project/program Terminal Evaluations
 - Engagement of Operational Focal Points in M&E

The GEF Evaluation Policy

- Gender-responsive approach
- Evaluations of Programs
- Jointly implemented projects
- Collection of data on socio-economic co-benefits and geospatial coordinates when possible



Underpinning IEO Work: Terminal Evaluations

GEF Evaluation Policy: Minimum Requirement

- Terminal Evaluations mandatory since 1995
- Required for full-size and medium-size projects

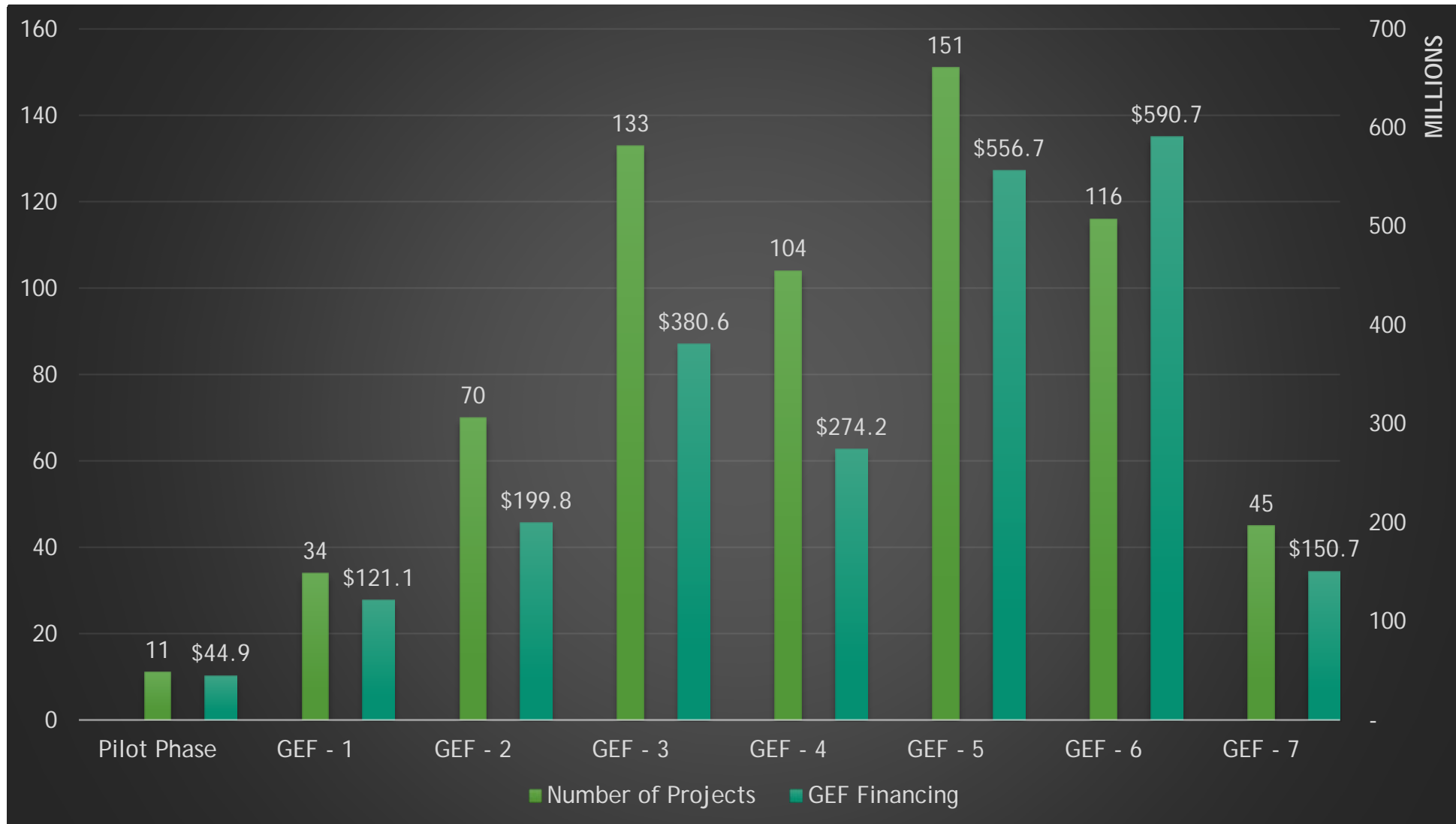
Terminal Evaluations mainly assess:

- Results: outputs, outcomes, sustainability and progress to impact
- M&E: M&E design, M&E implementation
- Implementation and Execution: quality of Implementation, quality of execution

EVALUATION FINDINGS

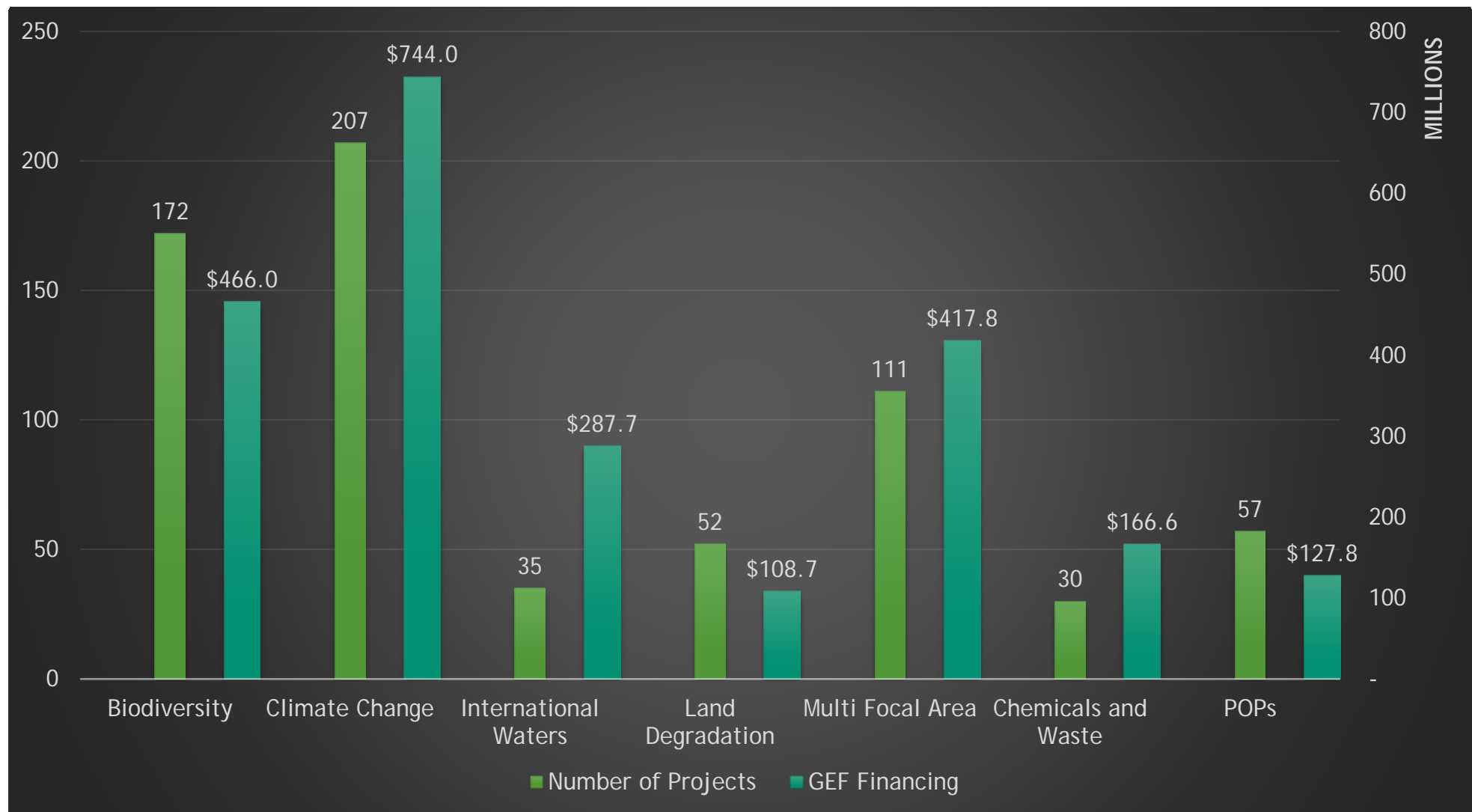
Eastern Africa Constituency

Portfolio by GEF phase



Eastern Africa Constituency

Portfolio by Focal Area

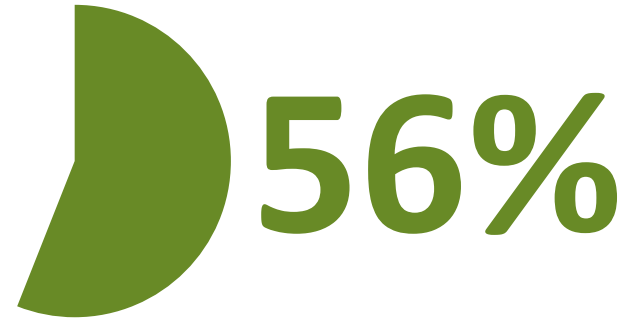


Performance in the Constituency

146 national and regional projects



achieved satisfactory
outcome ratings



have outcomes that are
likely to be sustained

Drivers of good performance:

- Quality of design
- Country context and Government support
- Quality of implementation and execution
- Materialization of Co-financing

Project example

Uganda Bwindi Forest and Mgahinga Gorilla National Park Conservation Project



- emphasis on benefit sharing led to a reduction in conflict and increased buy-in of the local communities for wildlife conservation

Project example

Sustainable Land Management (SLM) practices in Ethiopia



- *From 2009 to 2018 SLM project to address extreme land degradation in Ethiopia*
- *Scaled up from 86,892 ha (baseline, 2009) to 807,301.00 ha in 135 watersheds in 6 National States by 2018.*
- Improved the state of the environment through increased adoption of SLM practices.
- Improved land security was achieved in the projects, through an increase in official land certifications.
- Improved availability of water for human, animal and agricultural uses beneficiaries participated in income-generating activities

Project example

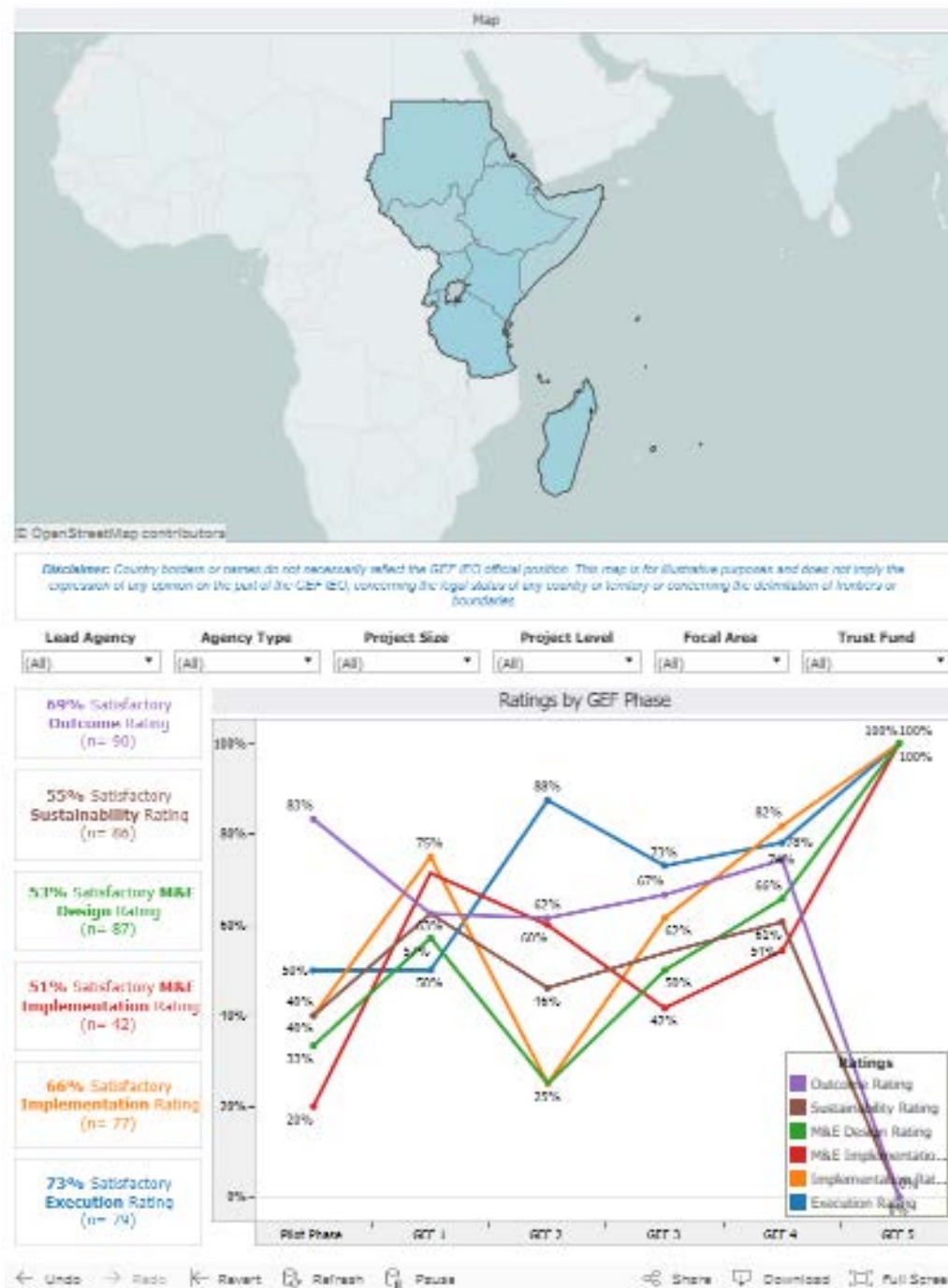
Lewa Wildlife Conservancy Project, Kenya



- Enhanced the capacities of the Lewa Wildlife Conservancy
- Facilitated the creation and management of new community conservancies
- Risks were reduced with an increase in budget support by the government and increased fundraising abilities of the protected area management

Data by Country and other resources on the IEO website

<http://www.gef.ieo.org/data-maps>



FOR MORE
VISIT US AT www.gefieo.org

OR EMAIL
selchoufi@TheGEF.org

