

# GEF-7 Food Systems, Land Use and Restoration Impact Program

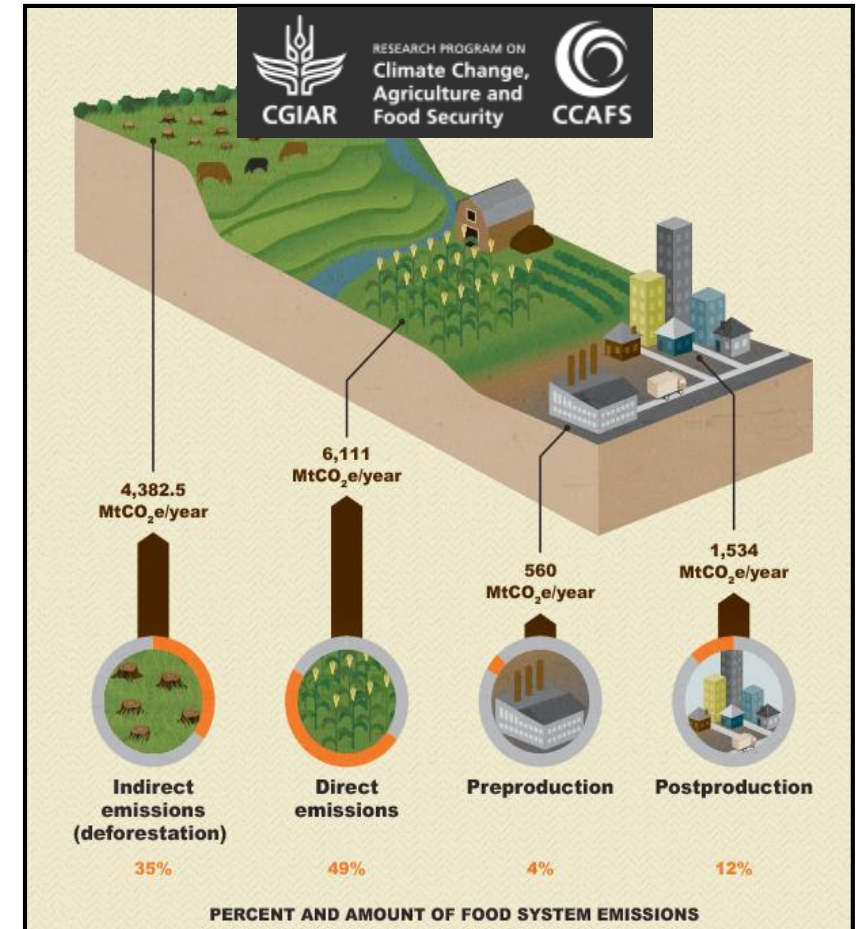


GLOBAL ENVIRONMENT FACILITY  
INVESTING IN OUR PLANET

[www.theGEF.org](http://www.theGEF.org)

# Food System Emissions

- **Food system emissions**—from production to consumption—contribute 9,800 to 16,900 MtCO<sub>2</sub>e per year (**19 to 29 % of total GHG**)
- **Deforestation and land use change alone** - 4 to 14 % of total global emissions
- **Direct emissions from agriculture alone** (ie managing soils, crops and livestock, etc) - 10 to 12 % of total global emissions.



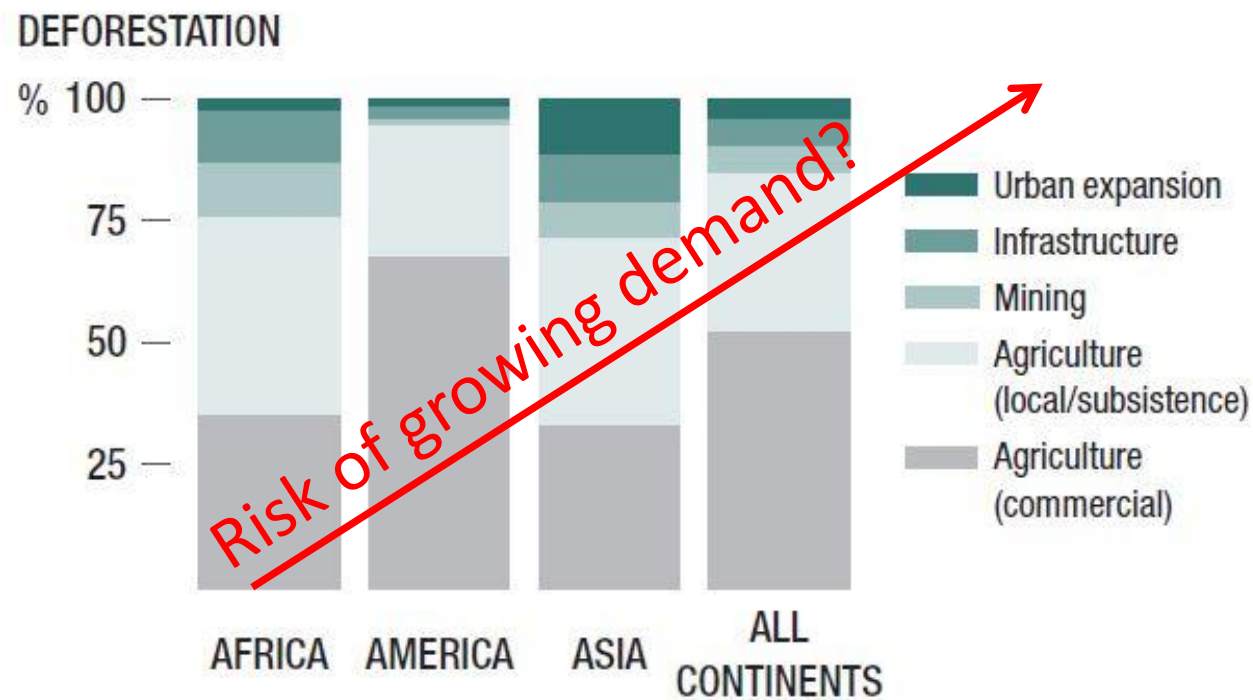
Source: Vermeulen et al. 2012; US-EPA, 2011; and Blaser and Robledo, 2007



GLOBAL ENVIRONMENT FACILITY  
INVESTING IN OUR PLANET

# Causes of Deforestation

Figure 1: Principle drivers of forest loss in tropical and sub-tropical countries (2000-2010)



Source: McFarland et al, 2015, ODI,

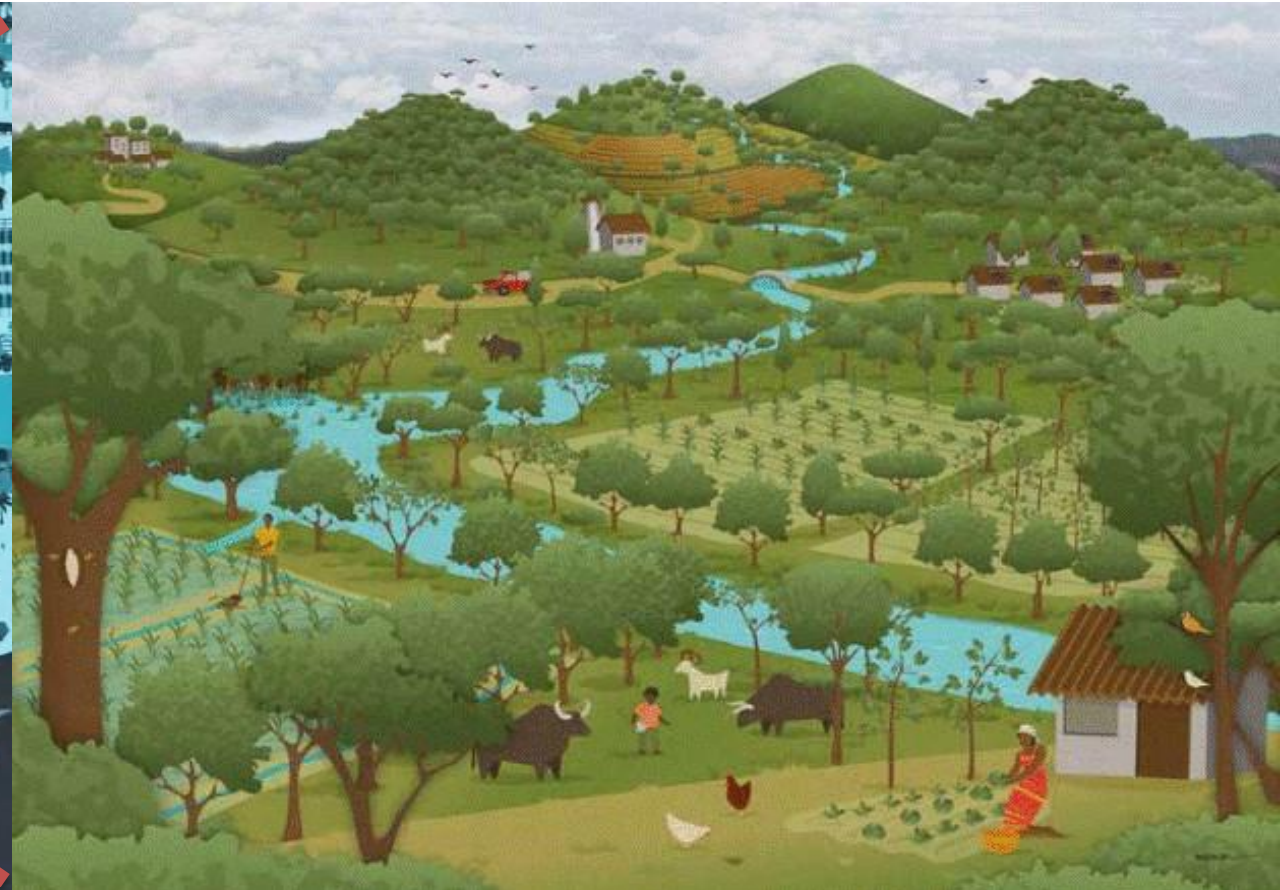


GLOBAL ENVIRONMENT FACILITY  
INVESTING IN OUR PLANET



# The Vision: Achieve Transformational Shift – “Sustainability”

Source: The Little Sustainable Landscapes Book



Source: Landscapes for People, Food and Nature



**GLOBAL ENVIRONMENT FACILITY**  
INVESTING IN OUR PLANET

[www.theGEF.org](http://www.theGEF.org)



# What needs to happen?

- Tackle negative externalities from food value chains
- Remove deforestation from commodity supply chains
- Expand restoration of degraded lands



Underpinned by: **Comprehensive land use planning** that reconciles competing land use, considers trade-offs, and harnesses synergy.



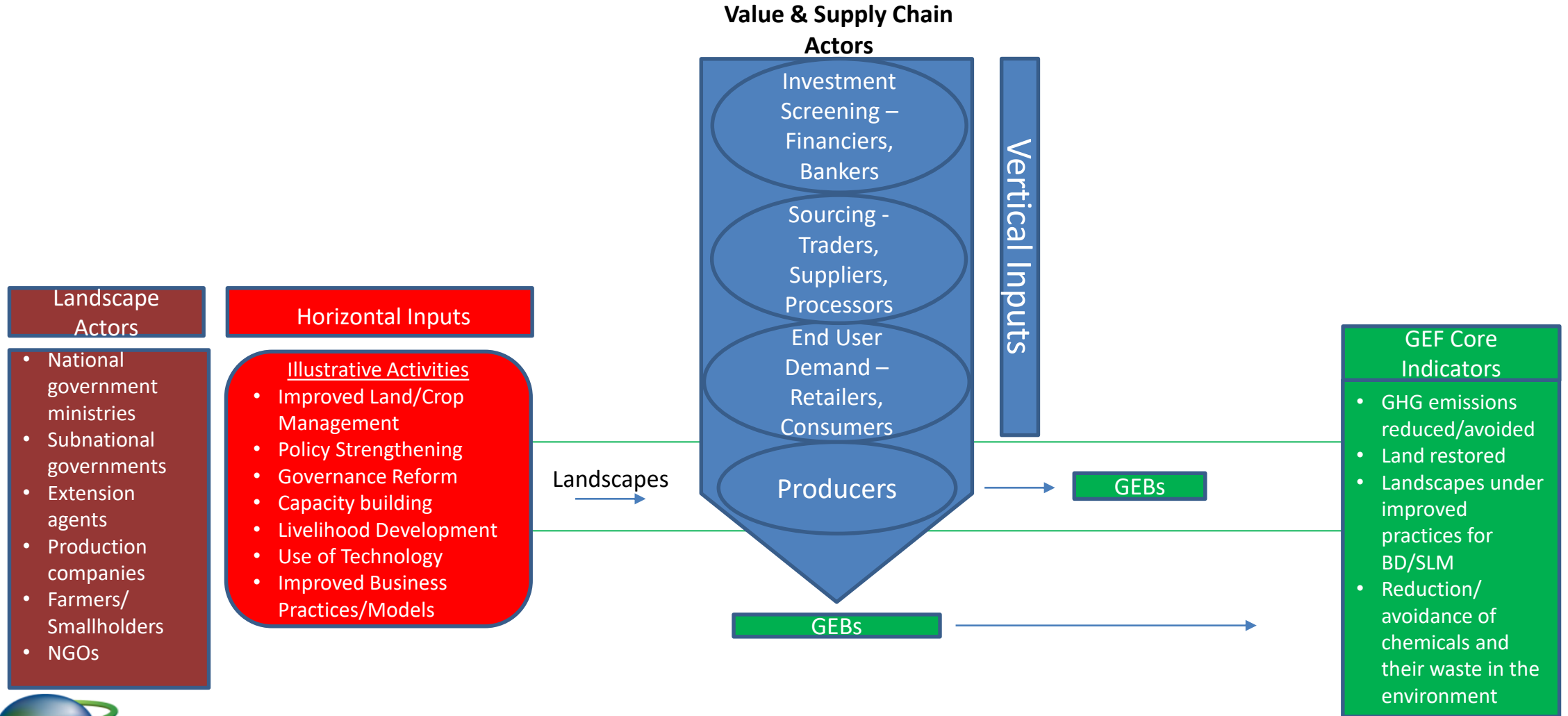
**GLOBAL ENVIRONMENT FACILITY**  
INVESTING IN OUR PLANET

[www.theGEF.org](http://www.theGEF.org)

# The how: Supply Chain Approach



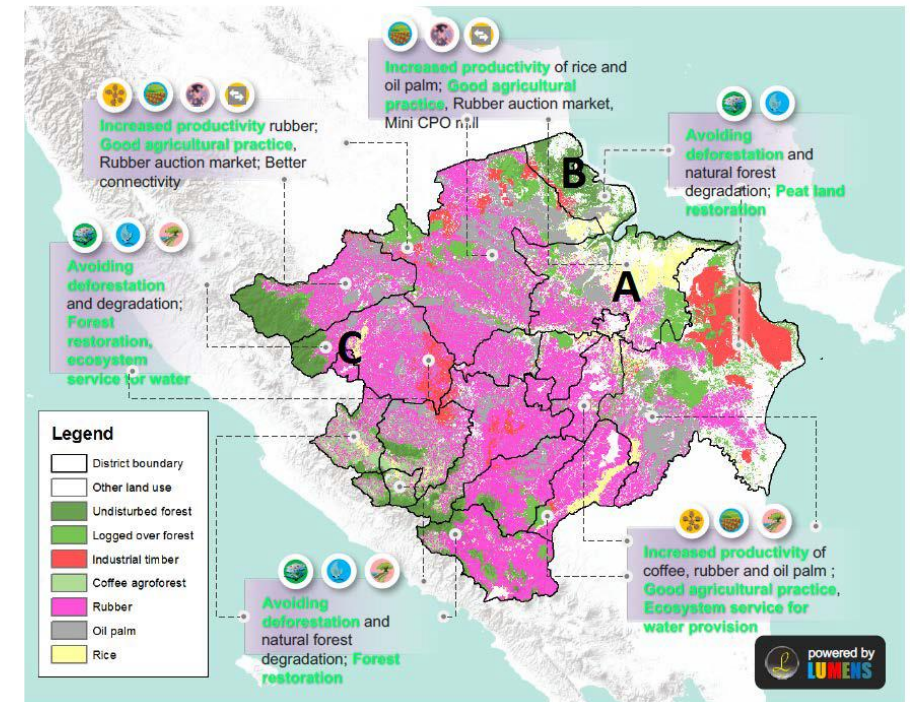
# Program Design Elements



# Target: Sustainable Integrated Landscapes

**Spatially explicit geographies where food and ecological systems are integrated, requiring implementation at scale of a suite of related strategies and interventions, and demonstrating the following characteristics:**

- **Evidence of environmental threat** from commodity driven deforestation or unsustainable agricultural systems
- **Potential for applying a comprehensive land use approach** linking production, biodiversity conservation, and restoration at scale
- **Willingness to work across national borders** for supply chain needs and other market driven demands.



**GLOBAL ENVIRONMENT FACILITY**  
INVESTING IN OUR PLANET

[www.theGEF.org](http://www.theGEF.org)



# Diversified Country Portfolio

1. Production landscapes that remain critical for GEBs but where remaining forests are threatened by expansion of commercial commodity production
2. Landscapes where production of globally important food crops or livestock creates high intensity negative externalities
3. “Frontier” landscapes where opportunity exists to preempt expansion and get ahead of commercial commodity-driven forest loss
4. Landscapes that are highly degraded and in need of restoration for the ecosystem services they provide to agricultural production



# Financing to projects will be prioritized by ability to demonstrate:

1. High potential/ability to generate multiple GEBs (GHG, BD, LD) and the significance that these represent in terms of **contribution to delivery of GEF core indicator targets**
2. Contribution to wider national/sub-national strategies and alignment with existing comprehensive land use plans
3. Public sector support (policy and institutional) and demonstrated political will of key government actors
4. Private sector involvement (markets and financing)
5. Potential for achieving large-scale change
6. Ability to catalyze innovations generated in technology, policy, governance, financing, and business models.



GLOBAL ENVIRONMENT FACILITY  
INVESTING IN OUR PLANET

# Landscape Example

## Potential Actions at Scale

- Improve yields and decrease land use requirements by optimizing utilization of quality seedlings, BAP.
- Support forest restoration to rehab land to productive use and to maintain ecosystem services
- Train smallholder farmers and extension service staff in low carbon agricultural practices
- Conservation of agrobiodiversity by increasing on-farm diversification
- Convene multi-stakeholder dialogues to ensure involvement of local communities, indigenous peoples, and women on land use decisions
- Align policy at the national and sub-national levels to avoid negative interactions of multiple sectoral plans implemented independently in parallel.
- Harness the ability of agribusiness and the food industry to scale best practices and standards
- Support efforts to deploy public funds to de-risk and leverage private sector investments through blended finance financial tools

