



GLOBAL ENVIRONMENT FACILITY
INVESTING IN OUR PLANET



THE WORLD BANK
IBRD • IDA | WORLD BANK GROUP

GEF CEO and Chairperson

Carlos Manuel Rodriguez

**First Meeting for the Eighth Replenishment
of the GEF Trust Fund**

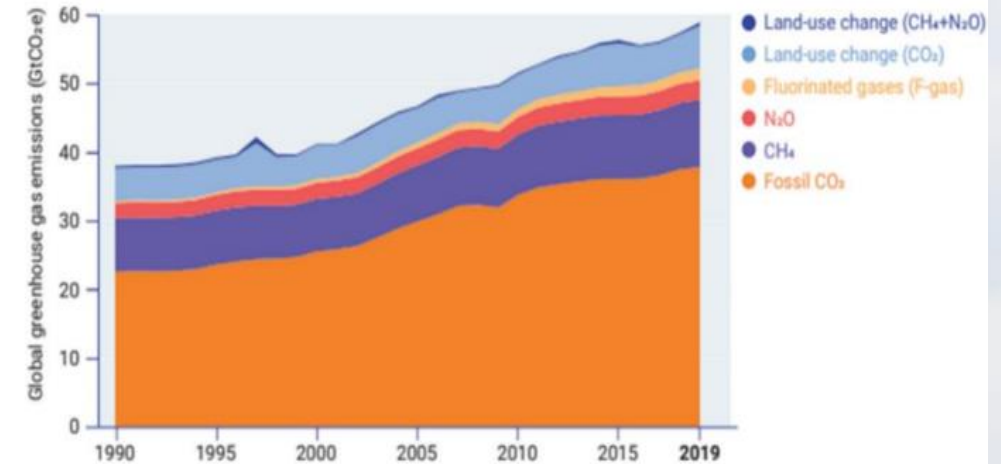
April 22 - 23, 2021

➤ Current context

Environmental Degradation

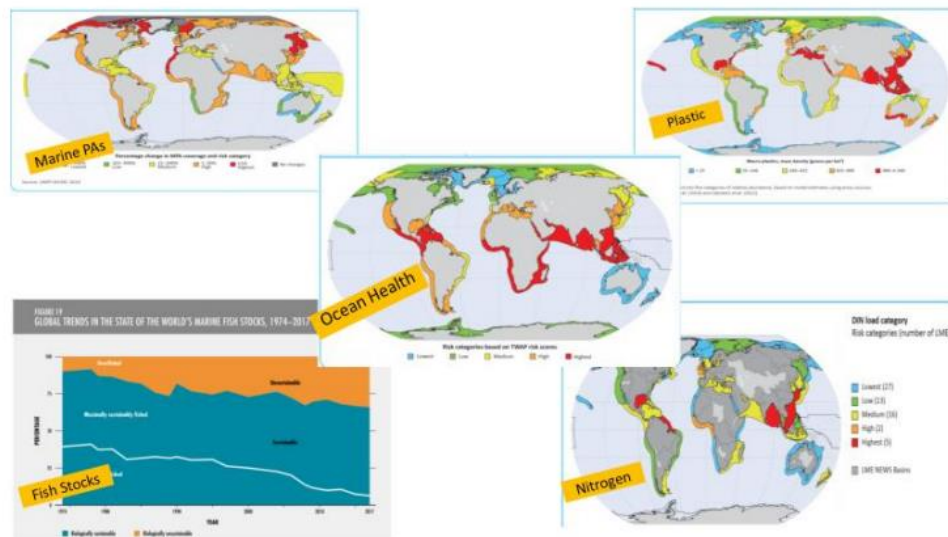
- Global GHG emissions are highest ever recorded.
- Declining ocean health.
- Biodiversity loss.

Global GHG emissions are at the highest level ever recorded



Source: UNEP Emission Gap Report

Declining ocean health across various metrics

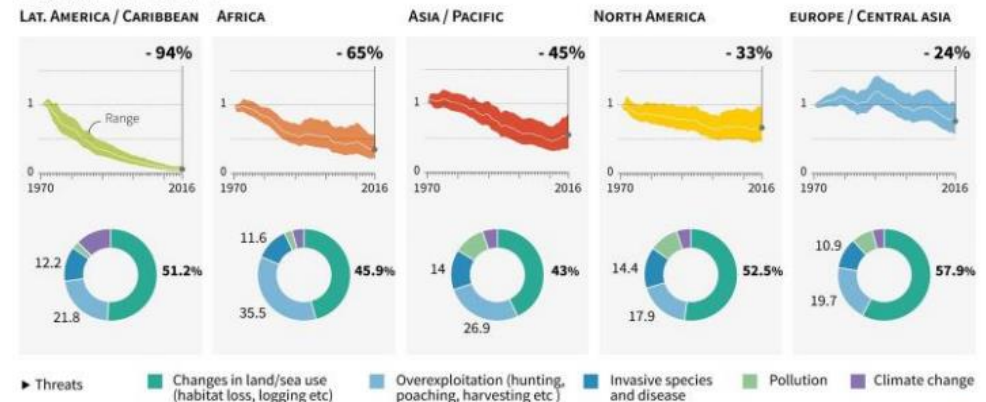


Biodiversity loss in different regions

Declining state of biodiversity

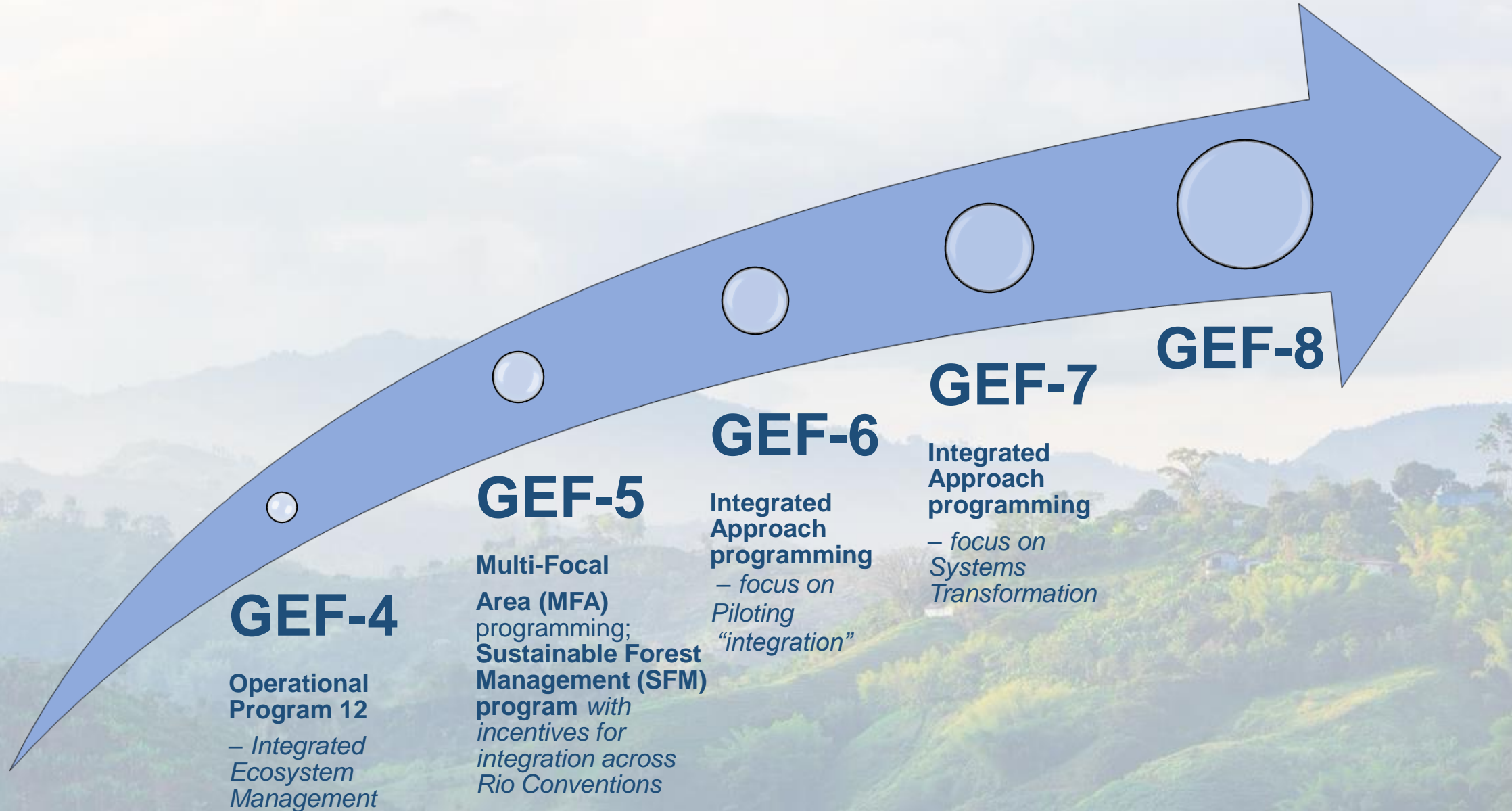
Average change in the size of monitored vertebrate species populations in the Living Planet Index, 1970-2016

► By region Index value (1970 = 1)



Source: WWF Living Planet Report 2020

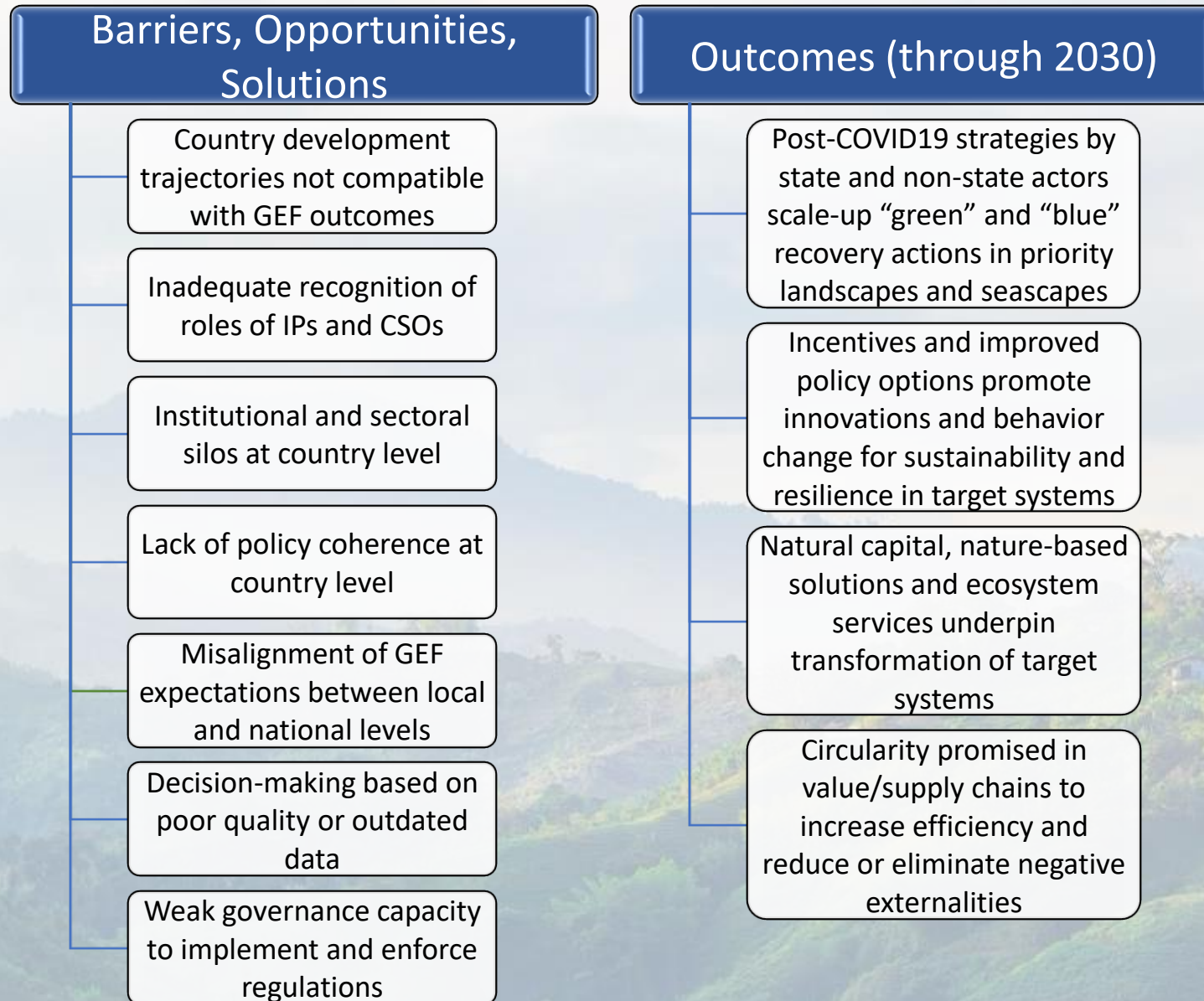
➤ *Evolution of Integrated Programming*



➤ *Architecture for GEF-8*



➤ *GEF-8 & GEF-9 towards 2030 agenda*





➤ *GEF's unique contributions*

- Towards a Long-Term Vision on Complementarity GEF and GCF Collaboration (*announcement at COP26*)

Possible areas of synergy:

- ☐ Cross-learning
- ☐ Qualitative complementarity for upscaling and more impact
- ☐ Pilot replication and upscaling
- ☐ Knowledge sharing of implementation structures



➤ ***GEF as a
Leader
to 2030
Goals***

A central player in the One Health approach towards a green, blue and resilient recovery

Uniquely placed to narrow the nature financing gap

GEF-8 and GEF-9 programming strategies aligned to international goals

➤ *Closing the Nature Funding Gap*

